



Global Futures: **Now**

September 2025

News



\$115M gift launches new conservation school

The newly renamed Rob Walton College of Global Futures, housed within the Julie Ann Wrigley Global Futures Laboratory, has added a fifth school: the Rob Walton School of Conservation Futures!

The School of Conservation Futures is dedicated to advancing conservation education and providing opportunities for learners at all levels, from first-year undergraduate students to experienced professionals seeking new credentials.

This school was made possible by a \$115 million gift from Rob Walton, a philanthropist, conservationist and the former chairman of Walmart.

“Conservation is important for our whole world,” said Walton. “We need nature to survive. We need clean air, clean water and food that is healthy. All those things come from nature. Ultimately, I’ve made this a priority.”

[Read about the new school](#)

Feature



At home in the wild

Follow ASU researchers on the ground in Ecuadoran forests, the Galapagos, Colombia and the Colorado Plateau as they work to protect endangered places — some of which they call home. From studying wax palms to building solar canoes, their on-the-ground efforts showcase ASU's work with local communities.

[Read more](#)

[Read about the STARS rating](#)

Our impact



ASU named global leader in sustainability

Arizona State University has earned national recognition as a trailblazer in sustainability, standing out as one of the most innovative colleges shaping a greener future, according to an annual publication that spotlighted ASU for its bold commitment to environmental progress and measurable results

[Read about the STARS rating](#)



An introduction to the Arizona Water Observatory

The Arizona Water Innovation Initiative continually develops new ways to engage with and understand water in the Southwest. Their latest tool, the Arizona Water Observatory, is designed to be a centralized repository for water data gathered by researchers across the state. The ultimate goal is to bridge gaps in accessibility and ensure faster, more efficient collaboration on water-related projects.

[Read about the observatory](#)

Opportunities



AAAS+ASU COLLABORATIVE

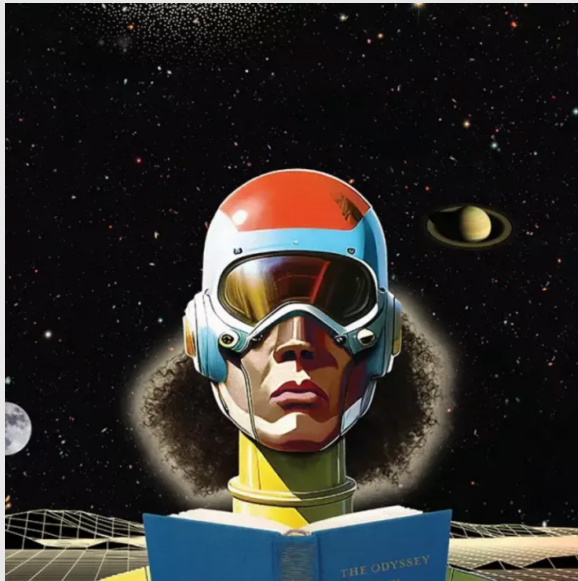
Become an AAAS member

Since 1848, the American Association for the Advancement of Science has been a global leader in research collaboration, policy engagement and scientific communication.

ASU's new strategic partnership with AAAS is offering the ASU community complimentary AAAS Elemental Membership, which includes professional development tools, networking opportunities and more.

[Sign up](#)

Impactful insights



How will we think of the past in the future?

William Dabars co-authored an article with ASU President Michael Crow for the Daedalus journal. This issue explores the harms we inflict on each other and our planet while imagining a bridge toward a more equitable tomorrow.

[Read more on ASU News](#)



'Escaping Flatland': Faculty advocate for AI literacy in higher education

ASU researchers are calling on universities to prepare students and faculty to engage responsibly with the ethical, cultural and social dimensions of AI.

Michael Simeone, an associate research professor in the School of Complex Adaptive Systems, co-authored this white paper to recommend ethical guidelines and frameworks for developing and using AI.

[Read about AI literacy](#)

Upcoming events

Water system transformations: Findings from Kenya and implications for global resilience

Presented by Patrick Thomson, ASU Global
Institute of Sustainability and Innovation.

Oct. 2 | hybrid | 3 p.m. MST

Walton Center for Planetary Health | Room
560 | Arizona State University

777 E. University Dr., Tempe, AZ 85281



Register

The future of collaborative research at ASU: Insights and strategies

Co-hosted by Principled Innovation Infrastructure.

Oct. 8 | hybrid | 11 a.m. MST

Biodesign Institute B Auditorium | Arizona State University

727 E. Tyler St., Tempe, AZ 85281

[Register](#)



Food is medicine and eating for health

Co-hosted by the Swette Center for Sustainable Food Systems. Register on Eventbrite with the code **WorldFoodDay**.

Oct. 16 | in-person | 12:30 p.m. MST

Walton Center for Planetary Health Auditorium | Arizona State University

777 E. University Dr., Tempe, AZ 85281

[Register](#)

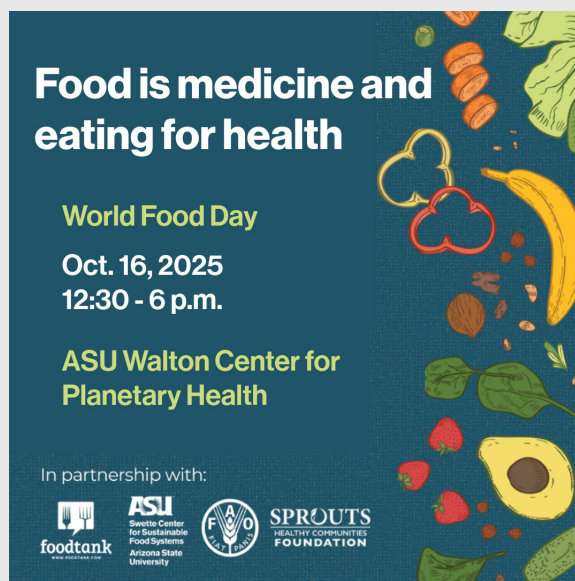
Food is medicine and eating for health

World Food Day

**Oct. 16, 2025
12:30 - 6 p.m.**

**ASU Walton Center for
Planetary Health**

In partnership with:



Groundwater Earth: The hidden frontline of climate change

Hosted by the ASU Water Institute.

Oct. 23 | in-person | 2 p.m. MST

Biodesign Institute, Building A | AL1 10/14
(lower level) | Arizona State University

727 E. Tyler St., Tempe, AZ 85281

[Register](#)



From scars to strength: the unforgettable journey of Kim Phuc

Save the date for this Wrigley Lecture, hosted by the Julie Ann Wrigley Global Futures Laboratory.

Registration link and more details to come.

Oct. 30 | in-person | 4-5 p.m. MST

Walton Center for Planetary Health
Auditorium | Arizona State University

777 E. University Dr., Tempe, AZ 85281



ASU Julie Ann Wrigley
Global Futures Laboratory™
Arizona State University



Don't miss any future news

Stay connected to the Global Futures Laboratory by subscribing to our newsletter. You can also sign up to receive our other updates, including event notifications and upcoming editions of our biannual journal, Global Futures: Futurecast.

[Subscribe now](#)