



# Surprise Recycling

---

Ashley Guelian, Emily Tucker, Chris  
Frettoloso, David Madsen



# What Our Project Is About

---

## Community Partners:

- Waste Management, Surprise Residents

## Sustainability Challenge Area:

- Waste Management & Municipal Recycling Program

## Objective:

Creative strategies to enhance the solid waste/recycling programs to:

- Increasing waste diversion- (40% in 3-5 Yrs) and recycling tonnages
- Reducing recycling contamination rates to under 15%



# Research Questions

---

- Sources of contamination?
- Current educational outreach?
- Is recycling mandatory?
- What has been learned from talking to the community?
- Servicing company & type of collection (single or dual stream)
- Have other municipal programs been researched?
- What has been the outcome of the educational programs implemented?

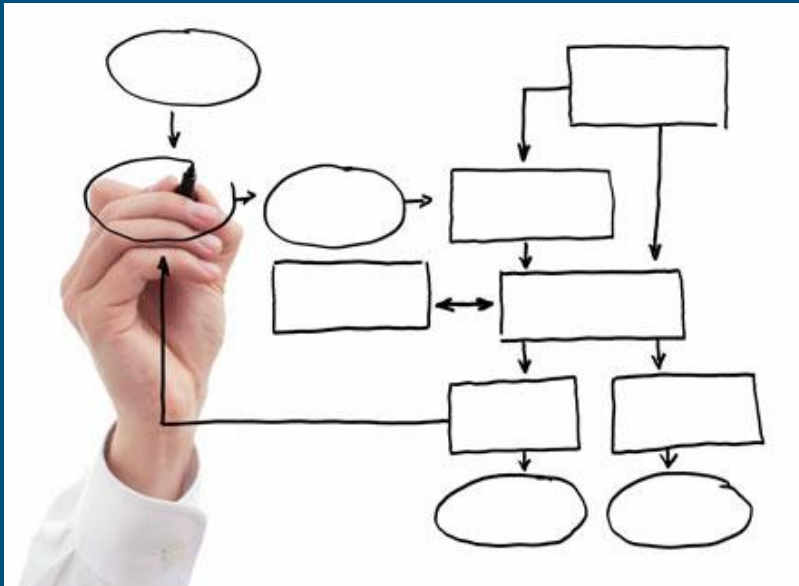


How has the project  
progressed?

---

# Overview of the Steps of the Research Project

---



- Understand the problem/challenges for the City of Surprise
- Overall objectives- Short Term & Long Term Solutions
- Researched other municipal program success

# Data Collection

---

## Methods of collecting data/research and contacting stakeholders

- Primary:
  - Interview with Christina Betz
- Secondary:
  - Online research

## Data collected/engagements with stakeholders

- Information on the recycling contract
- What the education efforts were and how they were implemented



# Results & Findings

---



## Intellectual/Scientific Lessons Learned

- Education is key
- Consistency is needed
- Recycling is very policy dependent
- Difference between single/dual stream

## Personal/Group Lessons Learned

- Waste Management/Recycling is a business
- Learning from other successes



## How are these lessons linked with the Key Competencies of Sustainability

- Recycling is socially, politically and economically driven

# Proposed Solutions

---

## Short term solutions

- Send out emails in addition to the Surprise Progress magazine
- Partnering with community groups
- Community drop-off events
- Incentive and encouragement program- RecycleBank
- EPA's WasteWise
- Contamination notification
- Survey
- Addressing top contaminants in outreach materials





# Proposed Solutions

---

## Long term solutions

- Renegotiating contracts with Waste Management
- Disposal fees to increase diversion
- Implement Zero Waste Program
  - Try to create unified efforts with other municipalities
- Mandatory state recycling policy



# Current Challenges

What do you still need to know or learn in order to do your project?

- Budget limitations with efforts to improve the recycling program?
- Would the city be willing to implement a zero waste program?
- Can we determine the efficacy of education/outreach?

What other challenges are you still facing?

- Recycling not mandatory by the state
- Viability of proposed solutions
- Lack of stakeholder communication from residents

How can your team, instructors, peers, help you face them.

- Input knowledge of successful programs
- Policy implementation



# Sources

---

<http://www.fairfaxva.gov/home/showdocument?id=2710>

<http://archive.epa.gov/region4/rcra/mgtoolkit/web/html/improving.html>

<http://www.theguardian.com/environment/2014/oct/27/how-councils-are-using-clever-and-innovative-ideas-to-increase-recycling-rates>

<http://www.cincinnati-oh.gov/recycling/news/city-outreach-efforts-to-increase-roselawn-recycling-rate/>

<http://waste-management-world.com/a/how-green-is-mechanical-biological-treatment>

<http://www.solidwaste.com/doc/recycling-incentive-program-proves-popular-0001>

Oskamp, S., Burkhardt, R. L., Schultz, P. W., Hurin, S., & Zelezny, L. (1998). Predicting three dimensions of residential curbside recycling: An observational study. *The Journal of Environmental Education*, 29(2), 37-42.

Dietz, T., Stern, P. C., & ebrary, I. (2002). *New tools for environmental protection: Education, information, and voluntary measures*. Washington, DC: National Academy Press.

Gamba, R. J., & Oskamp, S. (1994). Factors influencing community residents' participation in commingled curbside recycling programs. *Environment and Behavior*, 26(5), 587-612.  
<http://www.nrdc.org/cities/recycling/fover.asp>