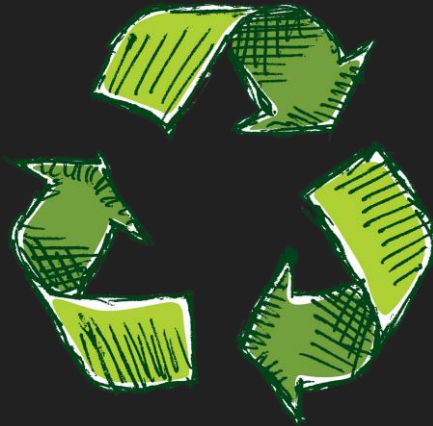


Barriers and Opportunities for Multifamily Dwelling Recycling in the City of Scottsdale

Anisa Abdul-Quadir
Shelbie Draper
Ben Numankadic
Max Ruhnke



Policy and
Governance in
Sustainability
March 28, 2017

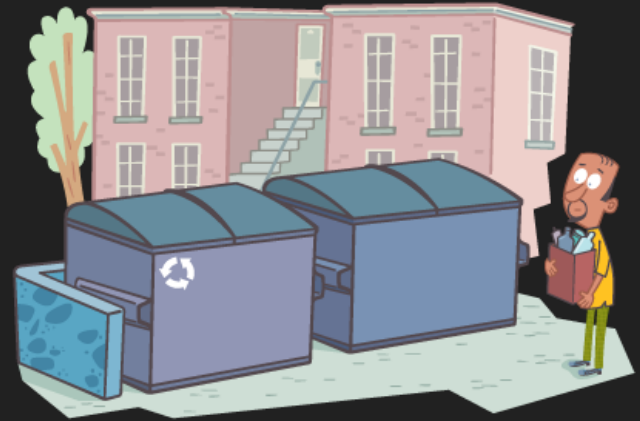
Barriers to Higher Diversion Rates

Education for transient populations

Non-compulsory servicing

Physical barriers for hauling

Community recycling expenses



Barrier: Education for a Transient Population



Servicing Multi-family Dwellings

Many residences do not have the proper channels for recycle pick up

Creating these would cost a lot of money so it is hard to convince landlords to do so

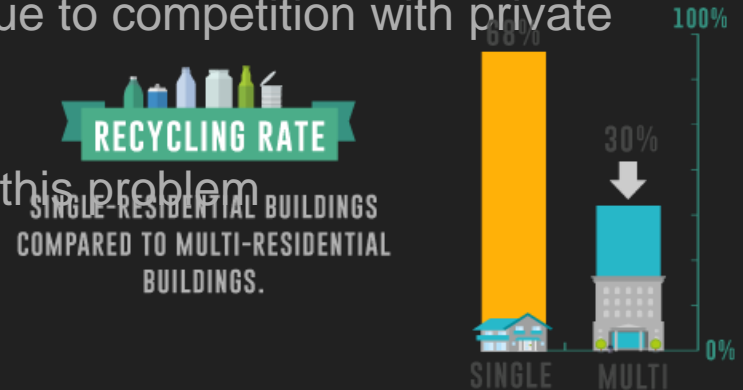
Also landlords have to pay for private recycling service

City does not pick up from multifamily homes due to competition with private waste removal firms

Education of residents is a huge key to solving this problem

If they want recycling then owners will.

Subsidies for retrofitting for recycling pickup



Physical Obstacles

Lack of space

Apartment owners not wishing to overcrowd their parking lots with recycling

People not wanting to overcrowd their apartments with an extra bin

Recycling being placed too far away

Solutions: requiring developers to provide easy access for recycling pickup

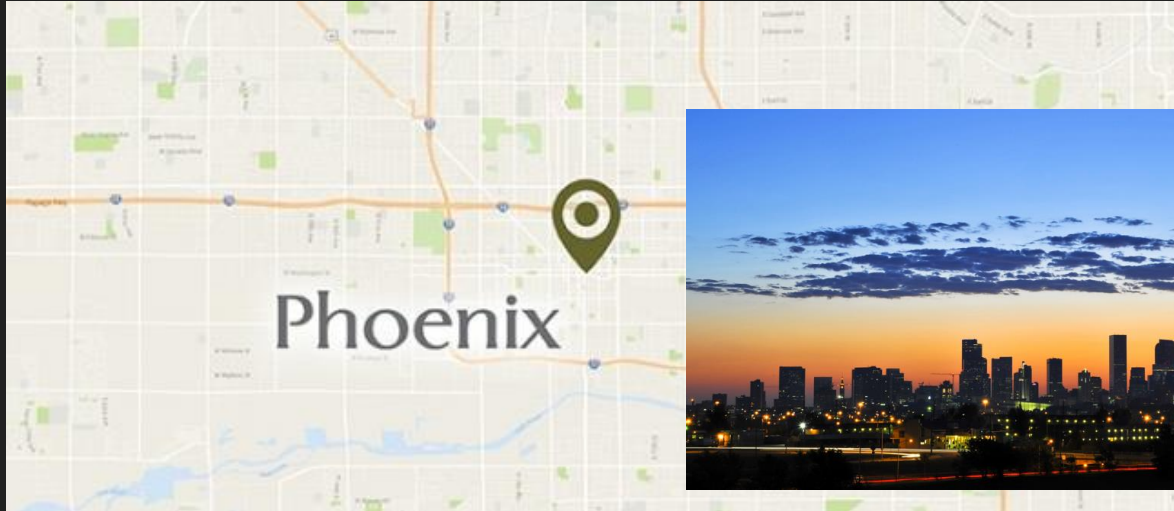
Apply for a subsidy for retrofitting existing buildings with recycling pickup



**Money is not the
most important thing
in the world. Love is.
Fortunately, I love money.**



It is possible..



Some Next Steps

