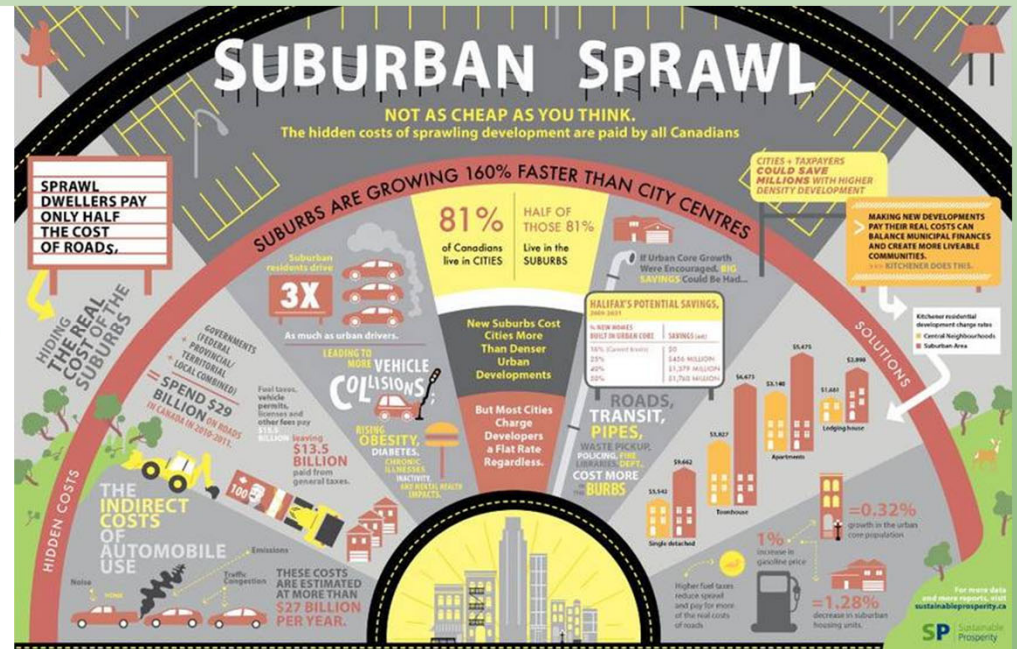
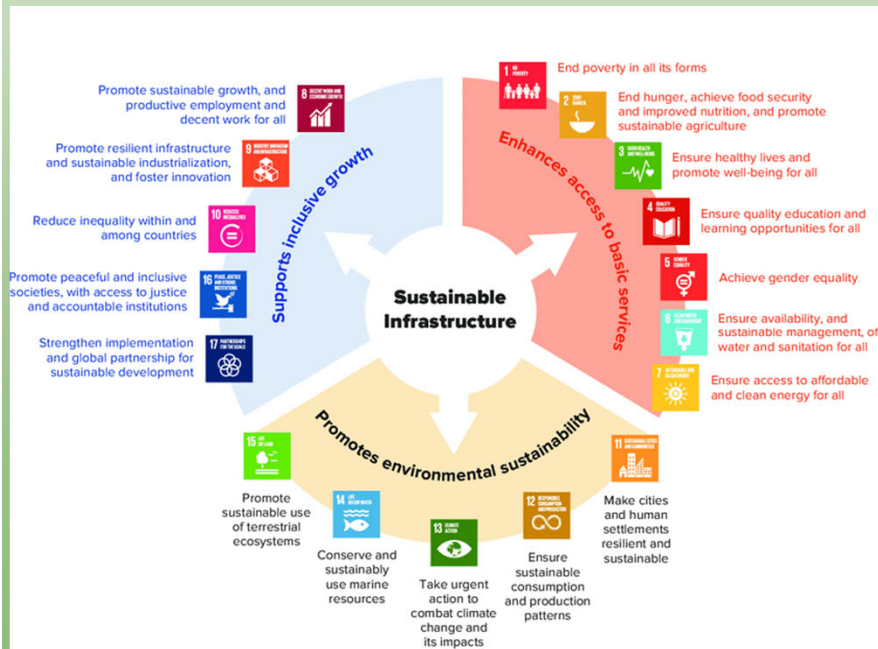




Collaborative Approach for a Resilient Maricopa County: Sustainability Benchmark Recommendations

SOS 498:
Urban Sustainability Best Practices Application
Fall 2018

Infrastructure Benchmarks Challenges & Opportunities



Infrastructure: Journey, Destination, and Experience

Transportation Benchmarks

2040- 10% of workers commuting by public transportation

Short-term Benchmark: 5% workforce commute by public transit by 2025

Mid-term Benchmark: 7% workforce commute by public transit by 2030

Long-term Benchmark: 9% workforce commute by public transit by 2035

Current (For County): \approx 2.3% workforce commute by public transit (U.S Census Bureau, 2016)

2040- 40% of population living within a 5 mile radius of their place of employment

Short-term Benchmark: 10% of Employees living 5 miles in proximity to work by 2025.

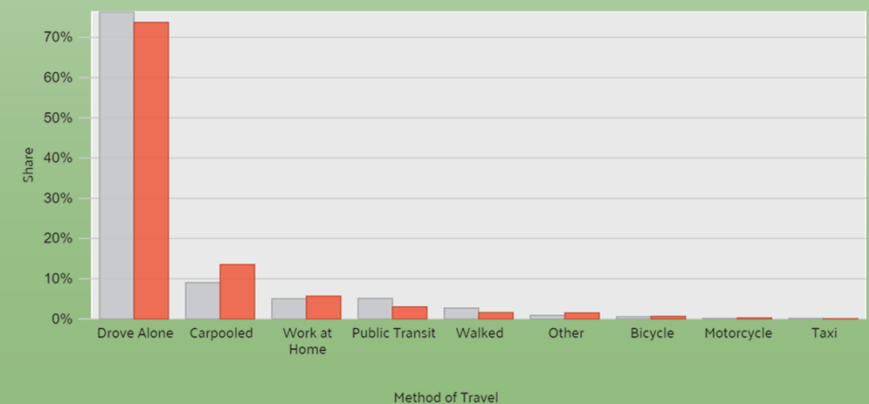
Mid-term Benchmark: 30% of Employees living 5 miles in proximity to work by 2030.

Long-term Benchmark: 35% of Employees living 5 miles in proximity to work by 2035.

Current: Average 10 miles away, 25 minutes commute; population living within 5 miles of work unknown (U.S Census Bureau, 2016)

Commuter Transportation in Phoenix, Az

Please note that the buckets used in this visualization were not evenly distributed by ACS when publishing the data.



Source: ACS, Year Estimate

DATAUSA:

Infrastructure: Journey, Destination, Experience

Parks Benchmark

2040- All municipal parks within Maricopa County should serve 100% of their residents (accessible by a 10 minute walking distance)

Short-term Benchmark: 65% of residents served by 2025

Mid-term Benchmark: 75% of residents served by 2030

Long-term Benchmark: 85% of residents served by 2035

Current Average: 56% of residents served- Based on the Maricopa County cities rated by ParkScore® (2018)

Buildings Benchmark:

2040- 100% of City operated buildings be at least LEED Silver Certified

Short-term Benchmark: 20% of City operated buildings retrofitted for at least LEED Silver by 2025

Mid-term Benchmark: 50% of City operated buildings retrofitted for at least LEED Silver by 2030

Long-term Benchmark: 75% of City operated buildings retrofitted for at least LEED Silver by 2035

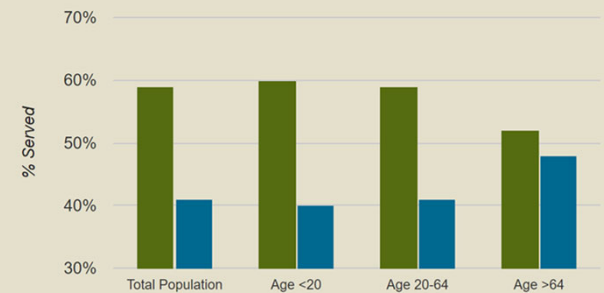
Current: 0% of current City operated buildings (based on a mode average of all 27 Maricopa County Cities)



U.S. Green Building Council "LEED"
Symbol

The Trust For Public Land ParkScore®
Chandler, Arizona

ACCESS TO PARKS BY AGE



Park access analyzed by age for Chandler, AZ
POPULATION within a ten-minute walk of a public park

Infrastructure: Journey, Destination, Experience

Urban Forestry Benchmark

2040- 25% Urban Forest Cover

Short-term Benchmark: 15% urban canopy coverage by 2025
Mid-term Benchmark: 18% urban canopy coverage by 2030
Long-term Benchmark: 20% urban canopy coverage by 2035
Current: \approx 6.8% average city urban canopy coverage in Maricopa County (2015)

Waterways Benchmark: Canal Oriented Development (COD)

2040- 60 miles of Developed Waterfront Canal Space

Short-term Benchmark: 15 miles of canalscape by 2025
Mid-term Benchmark: 30 miles of canalscape by 2030
Long-term Benchmark: 50 miles of canalscape by 2035
Current: \approx 12 miles in planning through Grand Canalscape plans.

“Every dollar invested in the urban forest results in an impressive return of \$2.23 in benefits.”- City of Phoenix Tree and Shade Master Plan and the US Dept. of Agriculture Forest Service.

Arizona Dwelling Urban Luxe
Partners- Scottsdale Waterfront

