

PHOENIX AREA SOCIAL SURVEY 2011

CODEBOOK

v. 3

FEBRUARY 4, 2016

PHOENIX AREA SOCIAL SURVEY 2011

1. Sample Selection of PASS 2011 Neighborhoods (n=45)

Five new neighborhoods were added to the 40 neighborhoods surveyed in the PASS 2006 (see section 2 for procedures used in selecting PASS 2006 neighborhoods). In PASS 2006 all but one of the surveyed areas was located at a Central Arizona-Phoenix Long-Term Ecological Research (CAP LTER) Survey 200 site. Four of the five new surveyed areas added in 2011 are not Survey200 points. S15 is the only new LTER point and Flux Tower, Power Ranch, 7-11, and NCAR neighborhoods were added because they are places of interest in other CAP LTER-related research projects. Figure 1 is a map with locations for all 45 neighborhoods surveyed in 2011. Neighborhoods are classified as core, suburban, fringe and as low-, middle-, or high-income, according to definitions explained in section 2. Appendix A at the end of this document is a list of the 45 PASS 2011 locations and classifications.

U.S. Census block groups are the basis for defining PASS survey areas. However, there were many changes between the Census 2000 and Census 2010 block group boundaries. We applied weighting procedures to represent the demographic characteristics of the PASS neighborhoods that changed census block group boundaries between survey years 2006 and 2011. Actual boundaries for the 40 PASS areas surveyed in both PASS 2006 and PASS 2011 are the same, but the PASS 2011 surveyed areas match Census 2010 Census Block Groups boundaries and were clipped to actual PASS-surveyed areas of Census Block Groups. Boundaries for 5 new surveyed areas in PASS 2011 also were added and used Census 2010 block groups (n=45). The boundary changes are described in supplementary documentation prepared for CAP LTER.

Also, in the inter-Census decade, the American Community Survey replaced the decennial census long form as the source for many sociodemographic variables, including household income <https://www.census.gov/acs/www/>. We used the five-year rolling averages for block group variables (ACS 2006-2010 5-year estimates) to characterize neighborhood demographics in PASS 2011. Selected census variables for the neighborhoods are attached to PASS 2011 survey records for individual survey respondents. Definitions of these variables and weighting procedures for matching 2010 census block group boundaries with PASS surveyed areas are described in supplementary PASS documentation prepared for CAP LTER.

2. Sample Selection of PASS 2006 Neighborhoods (n=40)

Neighborhoods for the PASS 2006 were selected from 204 randomly chosen long-term monitoring sites in the study area of the CAP LTER project. The CAP LTER 200-point survey, which covers 6,400 km², was conducted most recently in 2010. It is a periodic field survey designed to study vegetation, soil, and other ecological variables on 30 x 30-m sample plots distributed over all types of land uses in the study area.¹ Land use classifications of the sample plots reported in the 200-point survey indicated that 101 points were located in residential areas. After examining aerial photographs of the area surrounding the 101 points, 16 sites were visited

¹ Grimm, N.B. and Redman, C.L. 2004. Approaches to the study of urban ecosystems: the case study of Central Arizona – Phoenix. *Urban Ecosystems*, 7: 199-213.

in order to determine their suitability for inclusion in the residential sampling frame. Seven of these were eliminated because residences were not proximate to the location of the plot.

The LTER survey points are geo-referenced, which allowed us to overlay block group boundaries from the 2000 census on the 94 remaining sites. Census demographic data were assembled for those sites. The block groups were cross-classified by median household income and location into seven groups: low income core; low income suburban; middle to high income core*; middle income suburban; low to middle income fringe*, high income suburban, and high income fringe. (*Two groups were combined because there were few neighborhoods that fit the criteria.) An eighth category of retirement communities was added.

Five neighborhoods from each group (for a total of 40 neighborhoods) were selected with the objectives of creating a balanced sample of neighborhoods that would: 1) represent variation in ethnic/racial composition, homeowners and renters, and municipalities across the Phoenix metropolitan region; and 2) enable us to match spatially the PASS and 200-point survey data. In some fringe locations where census block groups were several times the average size of 0.25 mi², a residential area near the LTER survey plot was selected in which to sample households.

Criteria for Classifying Block Groups (Neighborhoods):

Median Annual Household Income in the 2000 U.S. Census*

Low: Under \$35,000

Middle: \$35,000 to \$70,000

High: Over \$70,000

*(2000 Census Median Household Income for Phoenix-Mesa SMA = \$44,752)

Core, Suburban, Fringe

Urban core neighborhoods are within 5 miles of downtown Phoenix or within 1.5 miles of the 7 other large-city downtowns, though exact distances varied a little based on historical development patterns (e.g., some of the new developments south of Phoenix are not much more than 5 miles from downtown). The downtown points are at the following intersections:

Chandler: Chandler Blvd & Arizona Av

Gilbert: Elliot Rd & Gilbert Rd

Glendale: Glendale Av & 59 Av

Mesa: Main St & Center St

Peoria: Peoria Av & 83 Av

Phoenix: Washington St & Central Av

Scottsdale: Indian School Rd & Scottsdale Rd

Tempe: University Dr & Mill Av

Urban fringe areas have a moderate amount of undeveloped land within a mile of the neighborhood in 2005. Comparing the location of PASS fringe points to the MAG Regional Report, 2005 (Map U-1), PASS fringe is in urban growth areas developed in 2000-2005.

Suburban – all others

Retirement

Median age of residents over 55 in 2000 U.S. Census; three neighborhoods are age-restricted and two are not.

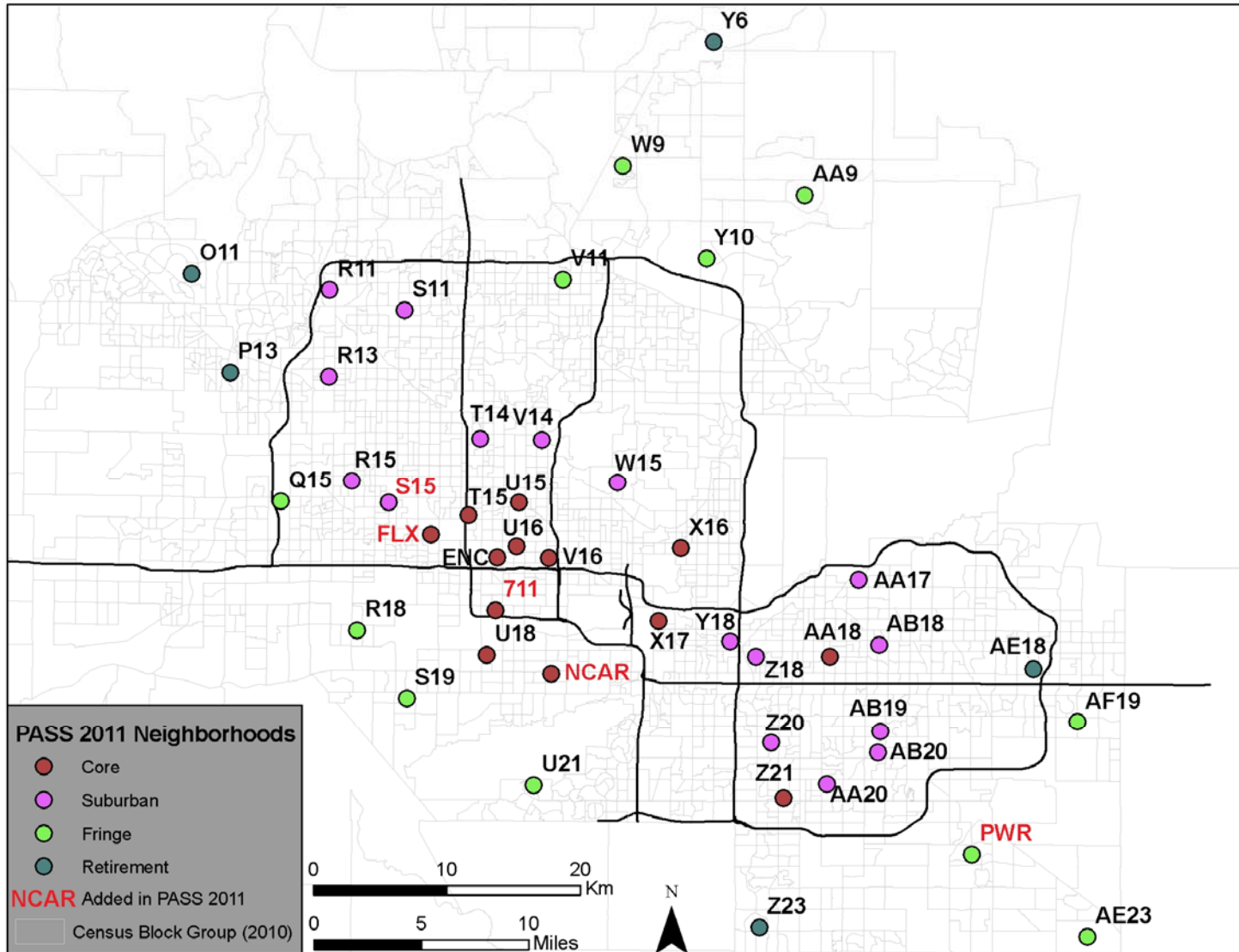
Ethnicity

“White:” 66 percent and over

“Hispanic:” 50 percent and over

“Mixed:” all others

Figure 1. PASS 2011: Locations of 45 Neighborhoods by Type (Core, Suburban, Fringe, Retirement)



CAP LTER tags for Survey200 are used as identifiers when the neighborhood includes (or is near) a site. Neighborhoods with characters in red are sites selected in 2011 because of relevance to CAP LTER research.

Section 3. Recruitment and Selection of Sample Households in PASS 2011

The survey was administered by the Institute for Social Science Research at Arizona State University from May 26, 2011 to January 6, 2012. Data were collected using a multi-modal approach. Below is an outline of the sampling and survey processes for households.

1. Sample selection of households

- a. The target population was heads of all households, ages 18 or older, who lived in the 45 selected neighborhoods (census block groups).
 - i. The sampling frame was GIS (Geographic Information Systems) created maps of each neighborhood from the Maricopa County Tax Assessor's records with each parcel of land noted with an APN (parcel ID) number.
 - ii. Each neighborhood was canvassed to determine the accuracy of the maps. Any discrepancies were noted. (For example, a house may be listed on the map but may have been torn down, or a lot may be shown on the map but be vacant.)
 1. All businesses were noted on the maps.
 2. All apartment buildings were noted on the maps. The number of apartments in each apartment complex and the apartment numbering system were noted.
- b. For each neighborhood, a list of eligible residential addresses was created from the maps and APN numbers, including apartments, mobile home parks and so forth.
- c. Addresses for 757 households that responded to the 2006 PASS were selected into the 2011 sample. These addresses were selected randomly in 2006 according to procedures described in (d) below. There were 808 completions in PASS 2006 but address information could only be extracted for 757 households.
- d. The remainder of addresses were chosen using a random selection function within SPSS (a computer program used for statistical analysis). The number of random addresses selected in each neighborhood was 40 minus the number of PASS 2006 addresses. This procedure yielded a total of 40 randomly selected addresses from the eligible list for each neighborhood.
 - i. The 40 addresses were used as the sample. These addresses will be referred to as "sample."
 - ii. During the field work, replacement sample (randomly selected) was used in some neighborhoods, primarily when a home was vacant or to increase the number of contacts if households were not responding. This additional sample was taken into account in calculating response rates.

2. Pre-survey efforts

- a. The following items were mailed to each sample address:
 - i. A postcard in English and Spanish, announcing "It's Coming" to notify people about the project and their incentive option for participating, followed by...
 - ii. A letter in English and Spanish, explaining the project and how to complete the survey, and their incentive option if they participate; the letter included instructions on how to complete the survey online, and

contact information for the ISSR if they needed help or wanted to take the survey over the phone or schedule an in-person interview. The letter also included the following items:

1. A brochure with “fast facts” about the project in English and Spanish;
 2. A \$1 bill; and,
 3. A magnet that was graphically designed with PASS printed on it.
- b. The above information was sent out over a period of approximately 6 weeks.
 - c. A phone line dedicated to PASS was installed at the ISSR. Sample was asked to call the number where they would reach a message (in English and Spanish) and be asked to leave information and a time for us to call them back.
 - d. Phone numbers were obtained for as many addresses as possible.
 - i. Using www.whitepages.com, addresses were entered and then phone numbers were accessed when available.
 1. We were able to find phone number for approximately 50 percent of the sample.
 2. About 25 percent of those phone numbers were inaccurate.
 3. Few phone numbers were obtained for apartments.
3. Methods of completing the survey
- a. Random selection within each household
 - i. In the letters sent to the households, in the scripts interviewers read to adults who answered the phone in each household, and in instructions provided at the beginning of the web survey, households were requested to allow the head of household who most recently celebrated a birthday to complete the survey.
 - b. Language
 - i. All correspondence was provided in English and Spanish;
 - ii. All written survey methods (online, phone and in-person) were provided in English and Spanish.
 - c. Online
 - i. A simple URL address was provided in the letter (see “2.a.ii”) where the survey could be accessed online: <http://pass.asu.edu/>
 - ii. Each sample was provided a unique login ID and password that the respondent had to enter to log onto the survey.
 - d. Telephone
 - i. Telephone interviewers called numbers provided through the phone number search (see “2d” above) and asked to conduct the interview at that time or to set up an appointment.
 - ii. Interviewers called each phone number a maximum of 20 times unless the respondent insisted s/he did not want to complete the survey.
 - iii. Interviewers also called appointments made through the hotline.
 - e. In person
 - i. Sample could request an in-person interview.
 - ii. Interviewers went to the addresses of households in the sample that had not completed the survey after the survey had been in the field for approximately 3 weeks.

1. English and Spanish-speaking interviewers went to each sample address where no one had completed the survey and did one or more of the following:
 - a. Conducted the interview at that time;
 - i. Interviewers took laptops with them so that they could access the questionnaire and record the responses.
 - b. Left a flier (prepared in English and Spanish);
 - c. Provided a card with the URL and the sample's login ID and password (in English and Spanish);
 - d. Obtained a phone number; and/or,
 - e. Obtained an appointment for an interview.
4. Follow up for non-response
 - a. Letters and/or postcards were sent periodically to each address that had not completed the survey (except for individuals who specifically requested us not to contact them) asking them to take it, reminding them of how to take it (online, phone, etc.), and providing their login ID and password.
 - i. A "Reminder" postcard in English and Spanish was sent to each address that had not completed the survey or opted out of the survey, approximately 2-3 weeks after the initial letter.
 - ii. A "Join Us" postcard in English and Spanish was sent to each address that had not completed the survey or opted out of the survey, approximately 2-3 weeks after the "Reminder" postcard.
 - iii. A letter which increased the incentive to \$30 for all respondents was sent in English and Spanish was sent to each address that had not completed the survey or opted out of the survey, approximately 2 weeks after the "Join Us" postcard.
 - iv. A letter which increased the incentive to \$50 for all respondents was sent in English and Spanish was sent to each address that had not completed the survey or opted out of the survey, approximately 8 weeks after the "\$30" letter.
 - b. Interviewers left messages on voice mail or answering machines asking sample to take the survey and providing basic information on the methods.
 - c. Interviewers visited the addresses of non-respondents (see "3e" above).
 - d. CAP LTER hired four individuals to make door-to-door visits in neighborhoods with low response rates. These interviewers (two male, two females) were older than ISSR interviewers and their demographic characteristics were similar to the sample being recruited. Two interviewers (male, female) were Latino, Spanish-speakers who recruited in their own neighborhoods, and two interviewers (male, female) were white Anglo who went to retirement communities and low-income neighborhoods.
5. Incentive
 - a. Initially, the incentives offered varied, randomly assigned one of the 9 following options: a check for \$10/\$20/\$30, a donation to a local food bank in their name for \$10/\$20/\$30, or the choice to receive \$10/\$20/\$30 or have an equivalent donation made in their name.

- b. In September, the incentive was changed to a check for \$30 for everyone to help obtain responses.
- c. In December, the incentive was increased to \$50 for everyone to help obtain responses.

Section 4. Response rates

2127 pieces of valid sample were used. From the valid sample, 806 completed surveys were obtained resulting in a minimum response rate RR1 of 43.36 percent, and RR2 = 44.27%.

(From the AAPOR Standard Definitions document) The response rate is the number of complete interviews with reporting units divided by the number of eligible reporting units in the sample. Using the final disposition codes described above, several response rates are described below:

- RR** = Response rate
- I** = Complete interview
- P** = Partial interview
- R** = Refusal and break-off
- NC** = Non-contact
- O** = Other
- UH** = Unknown if household/occupied HU
- UO** = Unknown, other

Response Rates

$$RR1 = \frac{I}{(I + P) + (R + NC + O) + (UH + UO)}$$

Response Rate 1 (RR1), or the minimum response rate, is the number of complete interviews divided by the number of interviews (complete plus partial) plus the number of non-interviews (refusal and break-off plus non-contacts plus others) plus all cases of unknown eligibility (unknown if housing unit, plus unknown, other).

$$RR2 = \frac{(I + P)}{(I + P) + (R + NC + O) + (UH + UO)}$$

Response Rate 2 (RR2) counts partial interviews as respondents.

Phone, web, and in-person surveys

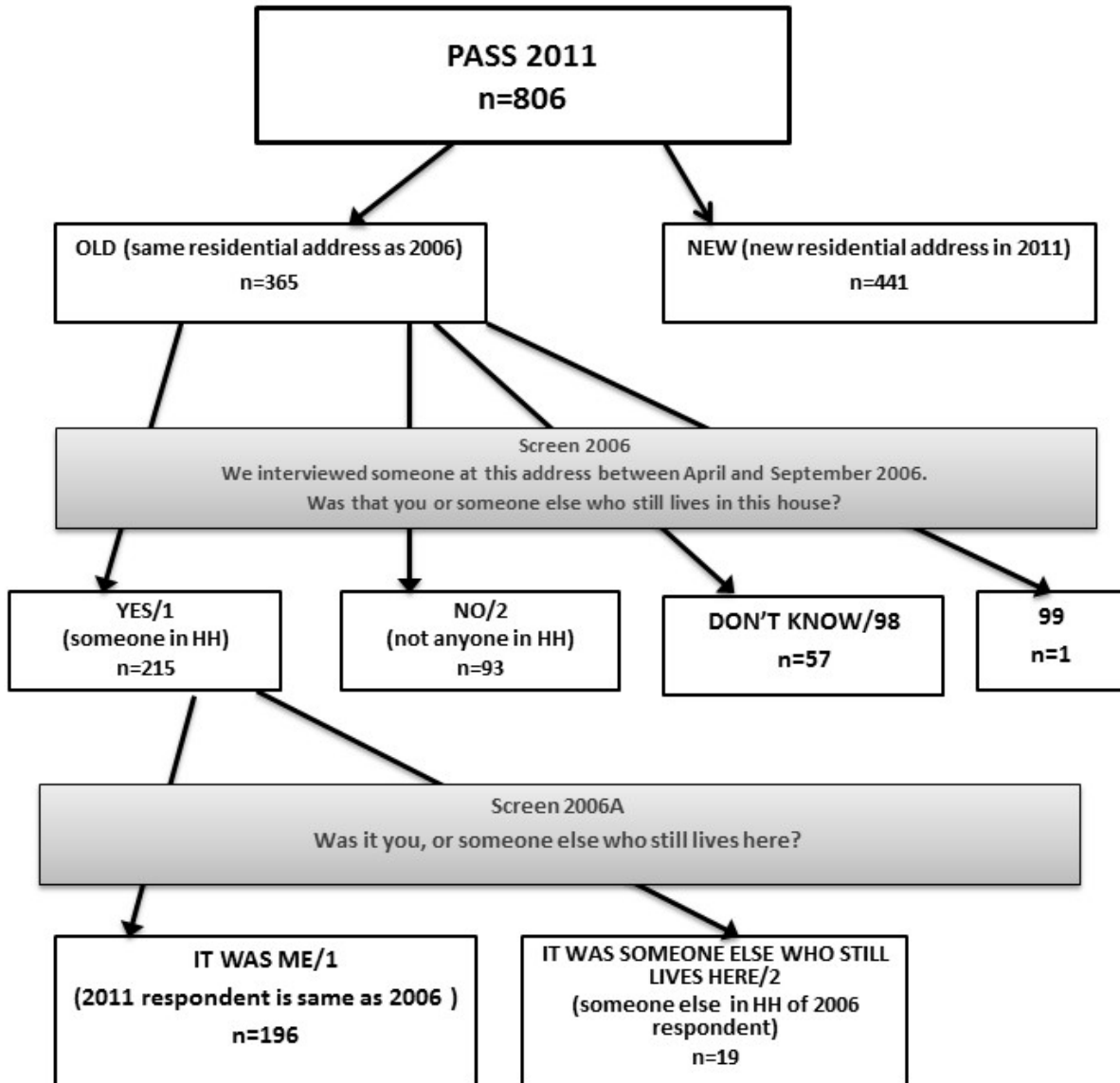
All of these modes used a software system called IBM SPSS Data Collection Interviewer.

Response rates by neighborhood are found in Appendix B. The highest RR1 response rates were over 50% and the lowest RR1 response rate was 29.79%

No adjustments were made in the response rates for NC (Non-contact) and UH, UO sample (unknown), although a case could be made for some kind of a fractional adjustment based on real

estate conditions at the time. Some of these sample household units *may have been* unoccupied because during 2011 there were many foreclosed homes in the region due to very slow recovery from the economic downturn that began in 2008.

Section 5. 2006 and 2011 survey respondents



The figure above details the relationship between 2006 and 2011 respondents to the PASS. The variable OLD in the 2011 dataset refers to the 365 respondents in 2011 who had the same residential address as a respondent to the 2006 survey. The Screen 2006 question was posed to these 365 individuals. Those answering YES/1 (n=215) were from the same household (people living together in the same house) as the 2006 respondent at the same address. Those answering NO/2 (n=93) were not from the same household as a 2006 respondent but were at the same residential address as the 2006 respondent was. The Screen 2006A question was posed to the 215

individuals who responded YES. Of these, 196 responded that they had been the individuals who responded to the 2006 PASS.

To summarize:

- 365 (45%) of the PASS 2011 respondents were from the same residential address as a 2006 respondent.
- 215 (27% of the total PASS 2011 respondents) of these individuals were from the same household as a 2006 respondent.
- 196 (24% of the total PASS 2011 respondents) individuals responded to both the 2006 and 2011 surveys.

More details about longitudinally analyzing the 2006 and 2011 surveys can be found in a separate report and codebook on the CAP LTER website, caplter.asu.edu

Section 6. Phoenix Area Social Survey 2011 – Codebook for Survey Response Questions

This codebook includes text of questions asked in the survey along with the response categories

Question Numbering:

--QUESTIONS AND ITEMS WITHIN QUESTIONS THAT WERE ASKED IN PASS 2006 KEPT THE SAME QUESTION NUMBER AND/OR LETTER.

--QUESTIONS THAT WERE ADDED FOR PASS 2011 WERE GIVEN QUESTION NUMBERS BEGINNING WITH Q200.

--NEW ITEMS WITHIN EXISTING QUESTION SETS (E.G., Q14A/B/C) WERE MARKED WITH AN X AND A NUMBER (E.G., Q14X1, X2, X3, ETC.)

--ALL QUESTIONS MARKED “RANDOMIZE” HAD THE ITEMS PRESENTED IN RANDOM ORDER; THE ORDER IN WHICH THEY WERE ASKED WAS RECORDED AS A DATA FIELD (E.G., Q6ORDER1, Q6ORDER2, ETC)

--“DON’T KNOW” RESPONSES WERE CODED AS “98” UNLESS OTHERWISE SPECIFIED.

--“PREFER NOT TO ANSWER” RESPONSES WERE CODED AS “99” UNLESS OTHERWISE SPECIFIED.

Sample Variables for Each Record are as Follows:

1. Respondent_Serial: a unique numeric variable assigned by the IBM/SPSS system.
2. Respondent_ID: a unique alphanumeric variable (format is XX0123, two letters and four numbers) assigned by the project manager for use in mailing files and data processing; this was the ID number that respondents used to access the survey.
3. DataCollection_StartTime: the time as recorded by the IBM/SPSS system when the respondent first began the survey.
4. DataCollection_FinishTime: the time as recorded by the IBM/SPSS system when the respondent completed the survey.
5. MODE: describes the mode by which the respondent completed the survey; the options are ONLINE (did the survey online), TELCOMP (did the survey over the phone), and FIELDCOMP (did the survey in person).
6. TRACTNAME: an alphanumeric identifier assigned by the project team to identify each of the 45 selected neighborhoods.
7. TRACTNUMBER: a numeric identifier as assigned by the Census Bureau to each Census Tract selected.
8. BLOCKGROUP: a numeric identifier as assigned by the Census Bureau to each block group within the Census Tract selected.
9. Who got the SCREEN2006 question? Only respondents in the sample who had the same residential/house address as respondents to the 2006 survey (OLD) were asked this question. Respondents from residential/house addresses newly selected into the 2011 sample (known as NEW in the dataset), (see page 5) were NOT asked this question.
10. OLDNEW: text variable to separate OLD (from the same residential addresses as people who completed the survey in PASS 2006) respondents from NEW respondents in 2011.
11. OLD2006ID: If any individual responding to the 2011 PASS was from the same residential address as any individual who completed the PASS 2006, the ID from the PASS 2006 respondent with the same house address is shown here.
12. INCENTIVELETTER: shows the incentive option that the respondent accepted to complete the survey. Codes are as follows:

- A: respondent was given a check for \$10
- B: respondent was given a check for \$20
- C: respondent was given a check for \$30
- D: a donation was made to a local food bank in the respondent's name for \$10
- E: a donation was made to a local food bank in the respondent's name for \$20
- F: a donation was made to a local food bank in the respondent's name for \$30
- G: respondent was offered the choice of a check for \$10 or a donation of \$10
- H: respondent was offered the choice of a check for \$20 or a donation of \$20
- I: respondent was offered the choice of a check for \$30 or a donation of \$30
- J: respondent was offered the choice of a check for \$50 or a donation of \$50
- for options G,H,I,J the respondent's choice is recorded in a variable at the end of the data file called "CHOICE"

- 13. INCENTIVEAMOUNT: shows the dollar amount of the incentive that was actually given to the respondent.
- 14. ORIGINALINCENTIVE: shows the incentive option that was originally offered to the respondent when they were first sent the survey.
- 15. APN: shows the Assessor's Parcel Number of the property/address where the respondent lived. – Restricted/Suppressed
- 16. STREET: shows the street address where the respondent lived. – Restricted/Suppressed
- 17. CITY: shows the city where the respondent lived.
- 18. ZIP: shows the Zip Code where the respondent lived.

LANGPICK: What language do you want to do the survey in?/ ¿En qué idioma gustaría participar en la encuesta en?

- 1. English
- 2. Spanish

SCREEN2006: We interviewed someone at this address between April and September 2006. Was that you or someone else who still lives in this home?

- 1. Yes
- 2. No
- 98. Don't Know
- 99. Prefer not to answer

ASKED IF "YES" AT SCREEN2006

SCREEN2006A: Was it you, or someone else who still lives here?

- 1. It was me
- 2. It was someone else who still lives here

98. Don't Know

99. Prefer not to answer

We would like the same person to complete this survey, if possible. If it is not possible to have the same person, please go ahead and do the survey.

S1. How many years have you lived in the Valley?

(This is recorded as two variables)

S1YEARS – [NUMERIC OPEN END – actual number of years, 0-100]

S1MONTHS – [NUMERIC OPEN END – actual number of months, 1-11]

Less than 3 months – not qualified [TERMINATED]

Q1a. Please rate your sense of belonging in the following places. For each place, rate your sense of belonging using a scale of 1 to 10 where 1 means you have no sense of belonging and 10 means you have a very strong sense of belonging.

How much do you feel a sense of belonging in... **The United States of America.**

[NUMERIC OPEN END – actual number, 1-10]

98 – Don't know

99 – Refused

Q1c. Please rate your sense of belonging in the following places. For each place, rate your sense of belonging using a scale of 1 to 10 where 1 means you have no sense of belonging and 10 means you have a very strong sense of belonging.

How much do you feel a sense of belonging in... **Arizona.**

[NUMERIC OPEN END – actual number, 1-10]

98 – Don't know

99 – Refused

Q1d. Please rate your sense of belonging in the following places. For each place, rate your sense of belonging using a scale of 1 to 10 where 1 means you have no sense of belonging and 10 means you have a very strong sense of belonging.

How much do you feel a sense of belonging in... **The Valley.**

[NUMERIC OPEN END – actual number, 1-10]

98 – Don't know
99 – Refused

- Q1e. Please rate your sense of belonging in the following places. For each place, rate your sense of belonging using a scale of 1 to 10 where 1 means you have no sense of belonging and 10 means you have a very strong sense of belonging.
How much do you feel a sense of belonging in... **R's² City**)

[NUMERIC OPEN END – actual number, 1-10]

98 – Don't know
99 – Refused

- Q1f. Please rate your sense of belonging in the following places. For each place, rate your sense of belonging using a scale of 1 to 10 where 1 means you have no sense of belonging and 10 means you have a very strong sense of belonging.
How much do you feel a sense of belonging in... **Your neighborhood**

[NUMERIC OPEN END – actual number, 1-10]

98 – Don't know
99 – Refused

- Q2. Please rate the overall quality of life in the Valley today.

4226- Very good
2- Fairly good
3- Not very good
4- Not at all good
98- Don't know
99- Refuse to answer

- Q3. In the next 10 years, do you think the quality of life in the Valley will get much better, a little better, a little worse, much worse, or do you think the quality of life will stay about the same?

² "R" refers to Respondent

- 4226- Much better
 - 2- A little better
 - 3- A little worse
 - 4- Much worse
 - 5- Stay the same
 - 98- Don't know
 - 99- Refuse to answer
-

Q6 Question Set has 4 items which were asked in randomized order as follows:

Q6RanOrd – shows the order the 4 items were asked (as one text variable)

Q6Order1 – shows the item that was asked FIRST

Q6Order2 – shows the item that was asked SECOND

Q6Order3 – shows the item that was asked THIRD

Q6Order4 – shows the item that was asked FOURTH

Q6a. Next, do you strongly agree, somewhat agree, somewhat disagree or strongly disagree with each of the following statements? [RANDOMIZED]

I live in a close-knit neighborhood.

- 1 – Strongly agree
 - 2 – Somewhat agree
 - 3 – Somewhat disagree
 - 4 – Strongly disagree
 - 98 – Don't know
 - 99 – Refused
-

Q6b. Next, do you strongly agree, somewhat agree, somewhat disagree or strongly disagree with each of the following statements? [RANDOMIZED]

I can trust my neighbors.

- 1 – Strongly agree
 - 2 – Somewhat agree
 - 3 – Somewhat disagree
 - 4 – Strongly disagree
 - 98 – Don't know
 - 99 – Refused
-

Q6c. Next, do you strongly agree, somewhat agree, somewhat disagree or strongly disagree with each of the following statements? [RANDOMIZED]

My neighbors don't get along.

- 1 – Strongly agree
 - 2 – Somewhat agree
 - 3 – Somewhat disagree
 - 4 – Strongly disagree
 - 98 – Don't know
 - 99 – Refused
-

Q6d. Next, do you strongly agree, somewhat agree, somewhat disagree or strongly disagree with each of the following statements? [RANDOMIZED]

If there were a serious problem in my neighborhood, the residents would get together to solve it.

- 1 – Strongly agree
 - 2 – Somewhat agree
 - 3 – Somewhat disagree
 - 4 – Strongly disagree
 - 98 – Don't know
 - 99 – Refused
-

Q200. How well do you feel you know your neighbors?

- 4226- Very well
 - 2- Fairly well
 - 3- Not very well
 - 4- Not at all
 - 98- Don't know
 - 99- Refuse to answer
-

Q8. How often, if at all, do you typically visit with your neighbors?

- 4226- Daily or almost daily
- 2- 1-3 times a week

- 3- 1-3 times a month
 - 4- Less than once a month
 - 5- Never
 - 98- Don't know
 - 99- Refuse to answer
-

Q9. How often, if at all, do you and your neighbors do favors for each other such as watching children or pets, lending tools or helping with shopping?

- 4226- Daily or almost daily
 - 2- 1-3 times a week
 - 3- 1-3 times a month
 - 4- Less than once a month
 - 5- Never
 - 98- Don't know
 - 99- Refuse to answer
-

Q10. Overall, how much of an impact do you think that you or people like you can have in making your neighborhood a better place to live?

- 4226- A big impact
 - 2- A moderate impact
 - 3- A small impact
 - 4- No impact at all
 - 98- Don't know
 - 99- Refuse to answer
-

Q11d. In the past 12 months, have you gotten together informally with or worked with others in your community or neighborhood to try to deal with some community issue or problem?

- 1 – Yes
 - 2 – No
 - 98- Don't know
 - 99- Refuse to answer
-

Q13 Question Set has 11 items which were asked in randomized order as follows:

Q13RanOrd – shows the order the 11 items were asked (as one text variable)

Q13Order1 – shows the item that was asked FIRST

- Q13Order2 – shows the item that was asked SECOND
- Q13Order3 – shows the item that was asked THIRD
- Q13Order4 – shows the item that was asked FOURTH
- Q13Order5 – shows the item that was asked FIFTH
- Q13Order6 – shows the item that was asked SIXTH
- Q13Order7 – shows the item that was asked SEVENTH
- Q13Order8 – shows the item that was asked EIGHTH
- Q13Order9 – shows the item that was asked NINTH
- Q13Order10 – shows the item that was asked TENTH
- Q13Order11 – shows the item that was asked ELEVENTH

Now I would like to ask you some questions about satisfaction with your neighborhood.

Q13c. For each of the following items, please indicate whether you are very satisfied, somewhat satisfied, somewhat dissatisfied or very dissatisfied with that item or feature IN YOUR NEIGHBORHOOD. [RANDOMIZED]

The appearances of homes and yards

- 1 – Very satisfied
- 2 – Somewhat satisfied
- 3 – Somewhat dissatisfied
- 4 – Very dissatisfied
- 98- Don't know
- 99- Refuse to answer

Q13e. For each of the following items, please indicate whether you are very satisfied, somewhat satisfied, somewhat dissatisfied or very dissatisfied with that item or feature IN YOUR NEIGHBORHOOD. [RANDOMIZED]

The mix of racial and ethnic groups

- 1 – Very satisfied
 - 2 – Somewhat satisfied
 - 3 – Somewhat dissatisfied
 - 4 – Very dissatisfied
 - 98- Don't know
 - 99- Refuse to answer
-

Q13f. For each of the following items, please indicate whether you are very satisfied, somewhat satisfied, somewhat dissatisfied or very dissatisfied with that item or feature IN YOUR NEIGHBORHOOD. [RANDOMIZED]

The opportunities to interact with neighbors

- 1 – Very satisfied
 - 2 – Somewhat satisfied
 - 3 – Somewhat dissatisfied
 - 4 – Very dissatisfied
 - 98- Don't know
 - 99- Refuse to answer
-

Q13g. For each of the following items, please indicate whether you are very satisfied, somewhat satisfied, somewhat dissatisfied or very dissatisfied with that item or feature IN YOUR NEIGHBORHOOD. [RANDOMIZED]

Trees that provide shade

- 1 – Very satisfied
 - 2 – Somewhat satisfied
 - 3 – Somewhat dissatisfied
 - 4 – Very dissatisfied
 - 98- Don't know
 - 99- Refuse to answer
-

Q13j. For each of the following items, please indicate whether you are very satisfied, somewhat satisfied, somewhat dissatisfied or very dissatisfied with that item or feature IN YOUR NEIGHBORHOOD. [RANDOMIZED]

The quality of parks and common spaces

- 1 – Very satisfied
 - 2 – Somewhat satisfied
 - 3 – Somewhat dissatisfied
 - 4 – Very dissatisfied
 - 98- Don't know
 - 99- Refuse to answer
-

Q13k. For each of the following items, please indicate whether you are very satisfied, somewhat satisfied, somewhat dissatisfied or very dissatisfied with that item or feature IN YOUR NEIGHBORHOOD. [RANDOMIZED]

The variety of birds

- 1 – Very satisfied
 - 2 – Somewhat satisfied
 - 3 – Somewhat dissatisfied
 - 4 – Very dissatisfied
 - 98- Don't know
 - 99- Refuse to answer
-

Q13x1. For each of the following items, please indicate whether you are very satisfied, somewhat satisfied, somewhat dissatisfied or very dissatisfied with that item or feature IN YOUR NEIGHBORHOOD. [RANDOMIZED]

Walking distance to bus lines

- 1 – Very satisfied
 - 2 – Somewhat satisfied
 - 3 – Somewhat dissatisfied
 - 4 – Very dissatisfied
 - 98- Don't know
 - 99- Refuse to answer
-

Q13x2. For each of the following items, please indicate whether you are very satisfied, somewhat satisfied, somewhat dissatisfied or very dissatisfied with that item or feature IN YOUR NEIGHBORHOOD. [RANDOMIZED]

Walking distance to light rail

- 1 – Very satisfied
 - 2 – Somewhat satisfied
 - 3 – Somewhat dissatisfied
 - 4 – Very dissatisfied
 - 98- Don't know
 - 99- Refuse to answer
-

Q13m. For each of the following items, please indicate whether you are very satisfied, somewhat satisfied, somewhat dissatisfied or very dissatisfied with that item or feature IN YOUR NEIGHBORHOOD. [RANDOMIZED]

The number of long-term neighbors

- 1 – Very satisfied
 - 2 – Somewhat satisfied
 - 3 – Somewhat dissatisfied
 - 4 – Very dissatisfied
 - 98- Don't know
 - 99- Refuse to answer
-

Q13x3. For each of the following items, please indicate whether you are very satisfied, somewhat satisfied, somewhat dissatisfied or very dissatisfied with that item or feature IN YOUR NEIGHBORHOOD. [RANDOMIZED]

Safety

- 1 – Very satisfied
 - 2 – Somewhat satisfied
 - 3 – Somewhat dissatisfied
 - 4 – Very dissatisfied
 - 98- Don't know
 - 99- Refuse to answer
-

Q13x4. For each of the following items, please indicate whether you are very satisfied, somewhat satisfied, somewhat dissatisfied or very dissatisfied with that item or feature IN YOUR NEIGHBORHOOD. [RANDOMIZED]

The quality of schools

- 1 – Very satisfied
 - 2 – Somewhat satisfied
 - 3 – Somewhat dissatisfied
 - 4 – Very dissatisfied
 - 98- Don't know
 - 99- Refuse to answer
-

Q14 Question Set has 12 items which were asked in randomized order as follows:

- Q14RanOrd – shows the order the 12 items were asked (as one text variable)
Q14Order1 – shows the item that was asked FIRST
Q14Order2 – shows the item that was asked SECOND
Q14Order3 – shows the item that was asked THIRD
Q14Order4 – shows the item that was asked FOURTH
Q14Order5 – shows the item that was asked FIFTH
Q14Order6 – shows the item that was asked SIXTH
Q14Order7 – shows the item that was asked SEVENTH
Q14Order8 – shows the item that was asked EIGHTH
Q14Order9 – shows the item that was asked NINTH
Q14Order10 – shows the item that was asked TENTH
Q14Order11 – shows the item that was asked ELEVENTH
Q14Order11 – shows the item that was asked TWELFTH
-

- Q14a. Some people have mentioned that the following problems exist in their neighborhoods. Please indicate whether each item is a big problem, a little problem or not a problem at all IN YOUR NEIGHBORHOOD. [RANDOMIZED]

Vacant land

- 1 – Big problem
 - 2 – Little problem
 - 3 – Not a problem
 - 98 – Don't know
 - 99 – Refuse to answer
-

- Q14b. Some people have mentioned that the following problems exist in their neighborhoods. Please indicate whether each item is a big problem, a little problem or not a problem at all IN YOUR NEIGHBORHOOD. [RANDOMIZED]

Unsupervised teenagers

- 1 – Big problem
 - 2 – Little problem
 - 3 – Not a problem
 - 98 – Don't know
 - 99 – Refuse to answer
-

- Q14x1. Some people have mentioned that the following problems exist in their neighborhoods. Please indicate whether each item is a big problem, a little problem or not a problem at all IN YOUR NEIGHBORHOOD. [RANDOMIZED]

Air pollution

- 1 – Big problem
 - 2 – Little problem
 - 3 – Not a problem
 - 98 – Don't know
 - 99 – Refuse to answer
-

Q14f. Some people have mentioned that the following problems exist in their neighborhoods. Please indicate whether each item is a big problem, a little problem or not a problem at all IN YOUR NEIGHBORHOOD. [RANDOMIZED]

Crime

- 1 – Big problem
 - 2 – Little problem
 - 3 – Not a problem
 - 98 – Don't know
 - 99 – Refuse to answer
-

Q14h. Some people have mentioned that the following problems exist in their neighborhoods. Please indicate whether each item is a big problem, a little problem or not a problem at all IN YOUR NEIGHBORHOOD. [RANDOMIZED]

Litter or trash

- 1 – Big problem
 - 2 – Little problem
 - 3 – Not a problem
 - 98 – Don't know
 - 99 – Refuse to answer
-

Q14i. Some people have mentioned that the following problems exist in their neighborhoods. Please indicate whether each item is a big problem, a little problem or not a problem at all IN YOUR NEIGHBORHOOD. [RANDOMIZED]

Noise

- 1 – Big problem

- 2 – Little problem
 - 3 – Not a problem
 - 98 – Don't know
 - 99 – Refuse to answer
-

Q14j. Some people have mentioned that the following problems exist in their neighborhoods. Please indicate whether each item is a big problem, a little problem or not a problem at all IN YOUR NEIGHBORHOOD. [RANDOMIZED]

Graffiti

- 1 – Big problem
 - 2 – Little problem
 - 3 – Not a problem
 - 98 – Don't know
 - 99 – Refuse to answer
-

Q14x2. Some people have mentioned that the following problems exist in their neighborhoods. Please indicate whether each item is a big problem, a little problem or not a problem at all IN YOUR NEIGHBORHOOD. [RANDOMIZED]

People selling or using drugs

- 1 – Big problem
 - 2 – Little problem
 - 3 – Not a problem
 - 98 – Don't know
 - 99 – Refuse to answer
-

Q14x3. Some people have mentioned that the following problems exist in their neighborhoods. Please indicate whether each item is a big problem, a little problem or not a problem at all IN YOUR NEIGHBORHOOD. [RANDOMIZED]

Vandalism

- 1 – Big problem
- 2 – Little problem
- 3 – Not a problem
- 98 – Don't know
- 99 – Refuse to answer

Q14x4. Some people have mentioned that the following problems exist in their neighborhoods.
Please indicate whether each item is a big problem, a little problem or not a problem at all
IN YOUR NEIGHBORHOOD. [RANDOMIZED]

Too many homes for sale

- 1 – Big problem
 - 2 – Little problem
 - 3 – Not a problem
 - 98 – Don't know
 - 99 – Refuse to answer
-

Q14x5. Some people have mentioned that the following problems exist in their neighborhoods.
Please indicate whether each item is a big problem, a little problem or not a problem at all
IN YOUR NEIGHBORHOOD. [RANDOMIZED]

Groups hanging out causing trouble

- 1 – Big problem
 - 2 – Little problem
 - 3 – Not a problem
 - 98 – Don't know
 - 99 – Refuse to answer
-

Q14x6. Some people have mentioned that the following problems exist in their neighborhoods.
Please indicate whether each item is a big problem, a little problem or not a problem at all
IN YOUR NEIGHBORHOOD. [RANDOMIZED]

Too many paved surfaces such as roads or parking lots

- 1 – Big problem
 - 2 – Little problem
 - 3 – Not a problem
 - 98 – Don't know
 - 99 – Refuse to answer
-

Q201. Does your neighborhood have an area built to retain storm water (also known as a retention basin)?

1. Yes
 2. No
 98. Don't know
 99. Prefer not to answer
-

Q202. What happens to water during heavy rain in your neighborhood? (Choose only one)

1. Most soaks into the ground
 2. Most flows down the street to a storm drain
 3. Most flows down the street to a natural wash
 4. Most flows down the street to an area built to retain storm water
(also known as a retention basin)
 98. Don't know
 99. Prefer not to answer
-

Q203. Would you say there are more, fewer, or about the same number of homes in foreclosure or abandoned in your neighborhood than elsewhere in the Valley?

1. More homes in my neighborhood foreclosed or abandoned
 2. Fewer homes in my neighborhood foreclosed or abandoned
 3. About the same number of homes in my neighborhood and the Valley
 98. Don't know
 99. Prefer not to answer
-

Q15. On another matter, do you own or rent your current home?

- 4226- Own
 - 2- Rent
 - 3- Other (SPECIFY) [OPEN END; SEE Q15oth]
 - 4- Don't know
 - 5- Refuse to answer
-

Q15oth Other [OPEN ENDED; VERBATIM RESPONSES]

Q204. Have you had to move since the downturn in the housing market in 2007 for financial reasons?

1. Yes
2. No
98. Don't know
99. Prefer not to answer

Q16. Next, do you live in...

- 4226- A single family home [SKIP TO Q17 IF Q15=1; SKIP TO Q21 IF Q15=2; SKIP TO Q23 IF Q15>2]
- 2- A multi-family home like a duplex, triplex or multi-plex [SKIP TO Q17 IF Q15=1; SKIP TO Q21 IF Q15=2; SKIP TO Q23 IF Q15>2]
- 3- A townhouse or patio home [SKIP TO Q17 IF Q15=1; SKIP TO Q21 IF Q15=2; SKIP TO Q23 IF Q15>2]
- 4- A condominium [SKIP TO Q17 IF Q15=1; SKIP TO Q21 IF Q15=2; SKIP TO Q23 IF Q15>2]
- 5- An apartment [SKIP TO Q21]
- 6- A mobile home or trailer [SKIP TO Q17 IF Q15=1; SKIP TO Q21 IF Q15=2; SKIP TO Q23 IF Q15>2]
- 7- Other (SPECIFY) [SKIP TO Q17 IF Q15=1; SKIP TO Q21 IF Q15=2; SKIP TO Q23 IF Q15>2]
- 98- Don't know [SKIP TO Q17 IF Q15=1; SKIP TO Q21 IF Q15=2; SKIP TO Q23 IF Q15>2]
- 99- Prefer not to answer [SKIP TO Q17 IF Q15=1; SKIP TO Q21 IF Q15=2; SKIP TO Q23 IF Q15>2]

Q16oth Other [OPEN ENDED; VERBATIM RESPONSES]

Questions for Homeowners

Q17. What price do you estimate that your home would sell for in today's real estate market?

[NUMERIC OPEN END – actual number, 0-999999999]
[SKIP TO Q205]

- 4226- Don't know [GO TO Q17a]
 - 2- Refuse to answer [SKIP TO Q205]
-

Q17a. Please provide an estimate or your best guess of what your home would sell for in today's real estate market. (Your response to this question is crucial to the study.)

[NUMERIC OPEN END – actual number, 0-999999999]

- 4226- Don't know
- 2- Refuse to answer

Q205: What price do you think your home would have sold for in 2007?

[NUMERIC OPEN END – actual number, 0-999999999]
[SKIP TO Q207]

- 1. Don't know [GO TO Q206]
- 2. Prefer not to answer [GO TO Q207]

Q206: Please provide an estimate or your best guess of what your home would have sold for in 2007. (Your response to this question is crucial to the study.)

[NUMERIC OPEN END – actual number, 0-999999999]

- 1. Don't know
- 2. Prefer not to answer

Q207: When do you feel the price will return to the levels of 2007—a year, two years, or how long?

[NUMERIC OPEN END – actual number of years, 0-999999999]

- 1. Never
- 2. Don't know
- 3. Prefer not to answer

Q18. Does your household belong to a Homeowners Association? [A Homeowners Association (HOA) is a group of homes managed by a board that follows rules set out in the Covenants, Codes and Restrictions (CC&Rs). The CC&Rs might specify such things as whether you can lease your property, the colors you can paint your home, the types of plants you can have, what you can put in your yard and so forth.]

- 4226- Yes [GO TO Q19]
- 2- No [SKIP TO Q20]
- 98- Don't know [SKIP TO Q20]
- 99- Refuse to answer [SKIP TO Q20]

Q19. Are you very satisfied, somewhat satisfied, somewhat dissatisfied, or not at all satisfied with your Homeowners Association (HOA)?

- 4226- Very satisfied
- 2- Somewhat satisfied
- 3- Somewhat dissatisfied
- 4- Not at all satisfied
- 98- Don't know
- 99- Refuse to answer

Q20. Would you prefer living in a neighborhood with a Homeowners Association or a neighborhood without a Homeowners Association (HOA)?

- 4226- Neighborhood with a Homeowners Association
- 2- Neighborhood without a Homeowners Association
- 98 Don't know
- 99- Refuse to answer

Q17hold: This variable holds the numeric answer given at Q17 or Q17a.

IF Q17 AND Q17A ARE BOTH DON'T KNOW/REFUSED, SKIP TO Q23.

THE PROGRAM RANDOMLY ASSIGNED EACH RESPONDENT TO GROUP 1, 2, OR 3 AS SHOWN BELOW.

THIS ASSIGNMENT IS SHOWN IN THE DATA IN THE VARIABLE NAMED "MONEYPICK" WITH THE VALUES 1, 2, OR 3.

THE CORRESPONDING PERCENTAGES FOR A/B/C ARE USED AS MULTIPLIERS WITH Q17hold IN QUESTIONS 208, 209, AND 210.

<u>IF MONEYPICK = 1</u>	<u>IF MONEYPICK = 2</u>	<u>IF MONEYPICK = 3</u>
A 65%	A 55%	A 100%

B 55%	B 45%	B 80%
C 75%	C 65%	C 110%

Q208. If you could sell your house or condo now (within a month) for **Q208_Insert_Value** (A* value of Q17 or Q17A), would you?

- 1. Yes
- 2. No
- 98. Don't know **SKIP TO Q211**
- 99. Prefer not to answer **SKIP TO Q211**

ASK IF Q208 = YES

Q209. Suppose it was **Q209_Insert_Value** (B* the value of Q17 or Q17A), would you?

- 1. Yes
- 2. No
- 98. Don't know
- 99. Prefer not to answer

ASK IF Q208 = NO

Q210. Suppose it was **Q210_Insert_Value** (C* the value of Q17 or Q17A), would you?

- 1. Yes
- 2. No
- 98. Don't know
- 99. Prefer not to answer

THE PROGRAM RANDOMLY ASSIGNED EACH RESPONDENT VALUES FOR "D" AND "E" AS SHOWN BELOW.

THIS ASSIGNMENT IS SHOWN IN THE DATA IN THE VARIABLES NAMED Q212_Insert_Value (for "D") and Q213_Insert_Value (for "E").

THE CORRESPONDING PERCENTAGES FOR D/E ARE USED AS INSERTS FOR EITHER Q212 OR 213.

--	--	--	--

D	90%	80%	75%
E	10%	20%	25%

Q211: If you were offered a job in another metropolitan area that allowed you to sell your house for **Q211_Insert_Value** (1.20 * the value of Q17 or Q17A) and move at the same salary and benefits you make now, would you move?

- 1. Yes
- 2. No
- 98. Don't know **SKIP TO Q23**
- 99. Prefer not to answer **SKIP TO Q23**

ASK IF Q211 = YES

Q212. Suppose the pay was only **Q212_Insert_Value (D%)** of what you make now, would you move?

- 1. Yes
- 2. No
- 98. Don't know
- 99. Prefer not to answer

ASK IF Q211 = NO

Q213. Suppose the pay was **Q213_Insert_Value (E%)** more than what you make now, would you move?

- 1. Yes
- 2. No
- 98. Don't know
- 99. Prefer not to answer

Questions for Renters

Q21. About how much rent do you pay each month?

[NUMERIC OPEN END – actual number, 0-99999999]

- 1. Don't know [GO TO Q21a]
- 2. Prefer not to answer [SKIP TO Q214]

Q21a. Please provide an estimate or your best guess. (Your response to this question is crucial to the study.)

[NUMERIC OPEN END – actual number, 0-999999999]

1. Don't know
 2. Prefer not to answer
-

THE PROGRAM RANDOMLY ASSIGNED EACH RESPONDENT VALUES FOR “D” AND “E” AS SHOWN BELOW.

THIS ASSIGNMENT IS SHOWN IN THE DATA IN THE VARIABLES NAMED Q215_Insert_Value (for “D”) and Q216_Insert_Value (for “E”).

THE CORRESPONDING PERCENTAGES FOR D/E ARE USED AS INSERTS FOR EITHER Q215 OR 216.

D	90%	80%	75%
E	10%	20%	25%

Q214: If you were offered a job in another metro area that allowed you to move without penalty regardless of the current terms of your lease and you could move at the same salary and benefits you make now, would you move?

1. Yes
2. No
98. Don't know
99. Prefer not to answer

SKIP TO Q23
SKIP TO Q23

Q215: Suppose the pay was only **Q215_Insert_Value (D%)** of what you make now, would you move?

1. Yes
2. No
98. Don't know

99. Prefer not to answer

Q216: Suppose the pay was **Q213_Insert_Value (E%)** more than you make now, would you move?

1. Yes
 2. No
 98. Don't know
 99. Prefer not to answer
-

Resume asking questions to everyone (owners and renters)

Q23 Question Set has 17 items which were asked in randomized order as follows:

Q23RanOrd – shows the order the 17 items were asked (as one text variable)

Q23Order1 – shows the item that was asked FIRST

Q23Order2 – shows the item that was asked SECOND

Q23Order3 – shows the item that was asked THIRD

Q23Order4 – shows the item that was asked FOURTH

Q23Order5 – shows the item that was asked FIFTH

Q23Order6 – shows the item that was asked SIXTH

Q23Order7 – shows the item that was asked SEVENTH

Q23Order8 – shows the item that was asked EIGHTH

Q23Order9 – shows the item that was asked NINTH

Q23Order10 – shows the item that was asked TENTH

Q23Order11 – shows the item that was asked ELEVENTH

Q23Order11 – shows the item that was asked TWELFTH

Q23Order13 – shows the item that was asked THIRTEENH

Q23Order14 – shows the item that was asked FOURTEENTH

Q23Order15 – shows the item that was asked FIFTEENTH

Q23Order16 – shows the item that was asked SIXTEENTH

Q23Order17 – shows the item that was asked SEVENTEENTH

Q23b. Next, do you strongly agree, somewhat agree, somewhat disagree or strongly disagree with each of the following statements? [RANDOMIZED]

The desert is an empty wasteland

- 1 – Strongly agree
- 2 – Somewhat agree
- 3 – Somewhat disagree
- 4 – Strongly disagree

- 98- Don't know
- 99- Refuse to answer

Q23c. Next, do you strongly agree, somewhat agree, somewhat disagree or strongly disagree with each of the following statements? [RANDOMIZED]

The desert is a very special place to me

- 1 – Strongly agree
- 2 – Somewhat agree
- 3 – Somewhat disagree
- 4 – Strongly disagree
- 98- Don't know
- 99- Refuse to answer

Q23x1. Next, do you strongly agree, somewhat agree, somewhat disagree or strongly disagree with each of the following statements? [RANDOMIZED]

We are approaching the limit of the number of people the earth can support

- 1 – Strongly agree
- 2 – Somewhat agree
- 3 – Somewhat disagree
- 4 – Strongly disagree
- 98- Don't know
- 99- Refuse to answer

Q23x2. Next, do you strongly agree, somewhat agree, somewhat disagree or strongly disagree with each of the following statements? [RANDOMIZED]

The balance of nature is very delicate and easily upset

- 1 – Strongly agree
 - 2 – Somewhat agree
 - 3 – Somewhat disagree
 - 4 – Strongly disagree
 - 98- Don't know
 - 99- Refuse to answer
-

Q23h. Next, do you strongly agree, somewhat agree, somewhat disagree or strongly disagree with each of the following statements? [RANDOMIZED]

The Earth is like a spaceship with very limited room and resources

- 1 – Strongly agree
 - 2 – Somewhat agree
 - 3 – Somewhat disagree
 - 4 – Strongly disagree
 - 98- Don't know
 - 99- Refuse to answer
-

Q23j. Next, do you strongly agree, somewhat agree, somewhat disagree or strongly disagree with each of the following statements? [RANDOMIZED]

Plants and animals have as much right as humans to exist

- 1 – Strongly agree
 - 2 – Somewhat agree
 - 3 – Somewhat disagree
 - 4 – Strongly disagree
 - 98- Don't know
 - 99- Refuse to answer
-

Q23k. Next, do you strongly agree, somewhat agree, somewhat disagree or strongly disagree with each of the following statements? [RANDOMIZED]

When humans interfere with nature, it often produces disastrous consequences

- 1 – Strongly agree
 - 2 – Somewhat agree
 - 3 – Somewhat disagree
 - 4 – Strongly disagree
 - 98- Don't know
 - 99- Refuse to answer
-

Q23m. Next, do you strongly agree, somewhat agree, somewhat disagree or strongly disagree with each of the following statements? [RANDOMIZED]

Despite our special abilities, humans are still subject to the laws of nature

- 1 – Strongly agree
 - 2 – Somewhat agree
 - 3 – Somewhat disagree
 - 4 – Strongly disagree
 - 98- Don't know
 - 99- Refuse to answer
-

Q23x3. Next, do you strongly agree, somewhat agree, somewhat disagree or strongly disagree with each of the following statements? [RANDOMIZED]

Human ingenuity will insure that we do NOT make the earth unlivable

- 1 – Strongly agree
 - 2 – Somewhat agree
 - 3 – Somewhat disagree
 - 4 – Strongly disagree
 - 98- Don't know
 - 99- Refuse to answer
-

Q23x4. Next, do you strongly agree, somewhat agree, somewhat disagree or strongly disagree with each of the following statements? [RANDOMIZED]

The so-called 'ecological crisis' facing humankind has been greatly exaggerated.

- 1 – Strongly agree
 - 2 – Somewhat agree
 - 3 – Somewhat disagree
 - 4 – Strongly disagree
 - 98- Don't know
 - 99- Refuse to answer
-

Q23x5. Next, do you strongly agree, somewhat agree, somewhat disagree or strongly disagree with each of the following statements? [RANDOMIZED]

Humans have the right to modify the natural environment to suit their needs.

- 1 – Strongly agree
 - 2 – Somewhat agree
 - 3 – Somewhat disagree
 - 4 – Strongly disagree
 - 98- Don't know
 - 99- Refuse to answer
-

Q23x6. Next, do you strongly agree, somewhat agree, somewhat disagree or strongly disagree with each of the following statements? [RANDOMIZED]

Humans are severely abusing the environment

- 1 – Strongly agree
 - 2 – Somewhat agree
 - 3 – Somewhat disagree
 - 4 – Strongly disagree
 - 98- Don't know
 - 99- Refuse to answer
-

Q23x7. Next, do you strongly agree, somewhat agree, somewhat disagree or strongly disagree with each of the following statements? [RANDOMIZED]

The earth has plenty of natural resources if we just learn how to develop them

- 1 – Strongly agree
 - 2 – Somewhat agree
 - 3 – Somewhat disagree
 - 4 – Strongly disagree
 - 98- Don't know
 - 99- Refuse to answer
-

Q23x8. Next, do you strongly agree, somewhat agree, somewhat disagree or strongly disagree with each of the following statements? [RANDOMIZED]

Humans were meant to rule over the rest of nature

- 1 – Strongly agree
 - 2 – Somewhat agree
 - 3 – Somewhat disagree
 - 4 – Strongly disagree
 - 98- Don't know
 - 99- Refuse to answer
-

Q23x9. Next, do you strongly agree, somewhat agree, somewhat disagree or strongly disagree with each of the following statements? [RANDOMIZED]

The balance of nature is strong enough to cope with the impacts of modern industrial nations

- 1 – Strongly agree
 - 2 – Somewhat agree
 - 3 – Somewhat disagree
 - 4 – Strongly disagree
 - 98- Don't know
 - 99- Refuse to answer
-

Q23x10. Next, do you strongly agree, somewhat agree, somewhat disagree or strongly disagree with each of the following statements? [RANDOMIZED]

Humans will eventually learn enough about how nature works to be able to control it

- 1 – Strongly agree
 - 2 – Somewhat agree
 - 3 – Somewhat disagree
 - 4 – Strongly disagree
 - 98- Don't know
 - 99- Refuse to answer
-

Q23x11. Next, do you strongly agree, somewhat agree, somewhat disagree or strongly disagree with each of the following statements? [RANDOMIZED]

If things continue on their present course, we will soon experience a major ecological catastrophe

- 1 – Strongly agree
 - 2 – Somewhat agree
 - 3 – Somewhat disagree
 - 4 – Strongly disagree
 - 98- Don't know
 - 99- Refuse to answer
-

Q217: Can you tell me what the “greenhouse effect” refers to? [RANDOMIZED]

- 1. Gases in the atmosphere that trap heat
 - 2. The earth's protective ozone layer
 - 3. Pollution that causes acid rain
 - 4. How plants grow
 - 98. Don't know
 - 99. Prefer not to answer
-

Q218 Question Set has 9 items which were asked in randomized order as follows:

Q218RanOrd – shows the order the 9 items were asked (as one text variable)

Q218Order1 – shows the item that was asked FIRST

Q218Order2 – shows the item that was asked SECOND

Q218Order3 – shows the item that was asked THIRD

Q218Order4 – shows the item that was asked FOURTH

Q218Order5 – shows the item that was asked FIFTH

Q218Order6 – shows the item that was asked SIXTH

Q218Order7 – shows the item that was asked SEVENTH

Q218Order8 – shows the item that was asked EIGHTH

Q218Order9 – shows the item that was asked NINTH

Q218a. We are interested in your thoughts about environmental risks to you and your household. Please indicate if you think the risks posed by each of the following items are very serious, somewhat serious, not too serious, or not at all serious for your household and your way of life?
[RANDOMIZED]

Drought

- 1. Very serious
 - 2. Somewhat serious
 - 3. Not too serious
 - 4. Not at all serious
 - 98. Don't know
 - 99. Prefer not to answer
-

Q218b. We are interested in your thoughts about environmental risks to you and your household. Please indicate if you think the risks posed by each of the following items are very serious, somewhat serious, not too serious, or not at all serious for your household and your way of life?
[RANDOMIZED]

Floods

- 1. Very serious
 - 2. Somewhat serious
 - 3. Not too serious
 - 4. Not at all serious
 - 98. Don't know
 - 99. Prefer not to answer
-

Q218c. We are interested in your thoughts about environmental risks to you and your household. Please indicate if you think the risks posed by each of the following items are very serious, somewhat serious, not too serious, or not at all serious for your household and your way of life?
[RANDOMIZED]

Global warming and climate change

- 1. Very serious
 - 2. Somewhat serious
 - 3. Not too serious
 - 4. Not at all serious
 - 98. Don't know
 - 99. Prefer not to answer
-

Q218d. We are interested in your thoughts about environmental risks to you and your household. Please indicate if you think the risks posed by each of the following items are very serious, somewhat serious, not too serious, or not at all serious for your household and your way of life?
[RANDOMIZED]

Urban heat island (Urban heat island is a term for rising temp in cities due to large buildings, pavement, and cars)

1. Very serious
 2. Somewhat serious
 3. Not too serious
 4. Not at all serious
 98. Don't know
 99. Prefer not to answer
-

Q218e. We are interested in your thoughts about environmental risks to you and your household. Please indicate if you think the risks posed by each of the following items are very serious, somewhat serious, not too serious, or not at all serious for your household and your way of life?
[RANDOMIZED]

Heat waves

1. Very serious
 2. Somewhat serious
 3. Not too serious
 4. Not at all serious
 98. Don't know
 99. Prefer not to answer
-

Q218f. We are interested in your thoughts about environmental risks to you and your household. Please indicate if you think the risks posed by each of the following items are very serious, somewhat serious, not too serious, or not at all serious for your household and your way of life?
[RANDOMIZED]

Severe storms

1. Very serious
2. Somewhat serious
3. Not too serious
4. Not at all serious
98. Don't know
99. Prefer not to answer

Q218g. We are interested in your thoughts about environmental risks to you and your household. Please indicate if you think the risks posed by each of the following items are very serious, somewhat serious, not too serious, or not at all serious for your household and your way of life?
[RANDOMIZED]

Air pollution

- 1. Very serious
 - 2. Somewhat serious
 - 3. Not too serious
 - 4. Not at all serious
 - 98. Don't know
 - 99. Prefer not to answer
-

Q218h. We are interested in your thoughts about environmental risks to you and your household. Please indicate if you think the risks posed by each of the following items are very serious, somewhat serious, not too serious, or not at all serious for your household and your way of life?
[RANDOMIZED]

Water pollution

- 1. Very serious
 - 2. Somewhat serious
 - 3. Not too serious
 - 4. Not at all serious
 - 98. Don't know
 - 99. Prefer not to answer
-

Q218i. We are interested in your thoughts about environmental risks to you and your household. Please indicate if you think the risks posed by each of the following items are very serious, somewhat serious, not too serious, or not at all serious for your household and your way of life?
[RANDOMIZED]

Safety of drinking water

- 1. Very serious
 - 2. Somewhat serious
 - 3. Not too serious
 - 4. Not at all serious
 - 98. Don't know
 - 99. Prefer not to answer
-

Q219: Global warming and climate change refer to the idea that the earth's average temperature has been increasing over the past 150 years, may be increasing more in the future, and that the earth's climate may change as a result. Do you agree or disagree that the effects of global warming and climate change are already occurring?

1. Strongly agree
 2. Somewhat agree
 3. Somewhat disagree
 4. Strongly disagree
 98. Don't know
 99. Prefer not to answer
-

Q220: Do you think global warming and climate change are: [RANDOMIZE ORDER OF RESPONSES 1,2,3]

1. Caused mostly by human activities
 2. Caused mostly by natural changes in the environment
 3. Caused by both human activities and natural changes
 4. None of the above because global warming and climate change are not happening
 98. Don't know
 99. Prefer not to answer
-

Q221: Do you strongly trust, somewhat trust, somewhat distrust or strongly distrust scientists as a source of information about global warming and climate change?

1. Strongly trust
 2. Somewhat trust
 3. Somewhat distrust
 4. Strongly distrust
 98. Don't know
 99. Prefer not to answer
-

Q26. Would you say the Valley is or is not currently in a drought?

- 4226- Is in a drought
- 2- Is not in a drought
- 3- Don't know
- 4- Refused to answer

Q40 Question Set has 7 items which were asked in randomized order as follows:

Q40RanOrd – shows the order the 7 items were asked (as one text variable)

Q40Order1 – shows the item that was asked FIRST

Q40Order2 – shows the item that was asked SECOND

Q40Order3 – shows the item that was asked THIRD

Q40Order4 – shows the item that was asked FOURTH

Q40Order5 – shows the item that was asked FIFTH

Q40Order6 – shows the item that was asked SIXTH

Q40Order7 – shows the item that was asked SEVENTH

Q40a. Next, do you support or oppose each of the following policies that some people have suggested to ensure the Valley has enough water in the future? [RANDOMIZED]

Investing in new technology to use water more efficiently

1. Strongly support
 2. Somewhat support
 3. Somewhat oppose
 4. Strongly oppose
 98. Don't know
 99. Prefer not to answer
-

Q40b. Next, do you support or oppose each of the following policies that some people have suggested to ensure the Valley has enough water in the future? [RANDOMIZED]

Increasing the price of water

1. Strongly support
 2. Somewhat support
 3. Somewhat oppose
 4. Strongly oppose
 98. Don't know
 99. Prefer not to answer
-

Q40c. Next, do you support or oppose each of the following policies that some people have suggested to ensure the Valley has enough water in the future? [RANDOMIZED]

Restricting water for residential outdoor uses, such as lawns and fountains

1. Strongly support
 2. Somewhat support
 3. Somewhat oppose
 4. Strongly oppose
 98. Don't know
 99. Prefer not to answer
-

Q40d. Next, do you support or oppose each of the following policies that some people have suggested to ensure the Valley has enough water in the future? [RANDOMIZED]

Educating the public about how to conserve water

1. Strongly support
 2. Somewhat support
 3. Somewhat oppose
 4. Strongly oppose
 98. Don't know
 99. Prefer not to answer
-

Q40e. Next, do you support or oppose each of the following policies that some people have suggested to ensure the Valley has enough water in the future? [RANDOMIZED]

Limiting new development of golf courses

1. Strongly support
 2. Somewhat support
 3. Somewhat oppose
 4. Strongly oppose
 98. Don't know
 99. Prefer not to answer
-

Q40f. Next, do you support or oppose each of the following policies that some people have suggested to ensure the Valley has enough water in the future? [RANDOMIZED]

Improving the management of our water resources

1. Strongly support
2. Somewhat support

- 3. Somewhat oppose
 - 4. Strongly oppose
 - 98. Don't know
 - 99. Prefer not to answer
-

Q40g. Next, do you support or oppose each of the following policies that some people have suggested to ensure the Valley has enough water in the future? [RANDOMIZED]

Finding and purchasing new sources of water

- 1. Strongly support
 - 2. Somewhat support
 - 3. Somewhat oppose
 - 4. Strongly oppose
 - 98. Don't know
 - 99. Prefer not to answer
-

Q222. How is the bill paid for water used in your household?

- 1. We pay based on water bills from the service provider. (ASK Q223)
 - 2. Our water bill is covered by our rent. (SKIP TO Q41)
 - 3. Our water bill is paid through fees charged by the HOA. (SKIP TO Q41)
 - 98. Don't know (SKIP TO Q41)
 - 99. Prefer not to answer (SKIP TO Q41)
-

THE PROGRAM RANDOMLY ASSIGNED EACH RESPONDENT A VALUE OF EITHER "5%", "10%", OR "20%". THIS ASSIGNMENT IS SHOWN IN THE DATA IN THE VARIABLE NAMED "WATERPICK". THE CORRESPONDING PERCENTAGE IS USED AS AN INSERT FOR Q223.

THE PROGRAM RANDOMLY ASSIGNED EACH RESPONDENT A VALUE OF "A" OR "B", PER THE CHART BELOW, AND RECORDED THE CORRESPONDING VALUES FOR EACH IN THE DATA IN THE VARIABLES NAMED "WATERPICKA" AND "WATERPICKB". THE CORRESPONDING VALUES ARE USED AS INSERTS FOR Q223.

	<u>1 One quarter</u>	<u>2 One third</u>	<u>3 One half</u>
A	\$90	\$120	\$180
B	\$270	\$240	\$180

Q223: Your water provider is concerned about improving water conservation among residential customers. What if your water provider offered a new program to replace old toilets with new water saving models?

The new toilet costs about \$360 installed and it will reduce monthly water use by approximately **WATERPICK (5, 10, 20)** percent. Your water provider will install and pay (**WATERPICKA**). Would you be willing to pay the rest of the cost (**WATERPICKB**) and have one of your toilets replaced?

1. Yes
 2. No
 3. Already have low-flow toilets
 4. Don't know
 5. Prefer not to answer
-

Q41 Question Set has 5 items which were asked in randomized order as follows:

Q41RanOrd – shows the order the 5 items were asked (as one text variable)

Q41Order1 – shows the item that was asked FIRST

Q41Order2 – shows the item that was asked SECOND

Q41Order3 – shows the item that was asked THIRD

Q41Order4 – shows the item that was asked FOURTH

Q41Order5 – shows the item that was asked FIFTH

Q41a. The next questions are about land uses and landscaping.

For each of the following, please indicate if you support or oppose preserving MORE of the following types of land in the Valley? [RANDOMIZED]

Agricultural land

1. Strongly support
2. Somewhat support
3. Somewhat oppose
4. Strongly oppose

- 98. Don't know
 - 99. Prefer not to answer
-

Q41b. For each of the following, please indicate if you support or oppose preserving MORE of the following types of land in the Valley? [RANDOMIZED]

Habitats alongside rivers and streams

- 1. Strongly support
 - 2. Somewhat support
 - 3. Somewhat oppose
 - 4. Strongly oppose
 - 98. Don't know
 - 99. Prefer not to answer
-

Q41c. For each of the following, please indicate if you support or oppose preserving MORE of the following types of land in the Valley? [RANDOMIZED]

Wild land or wilderness

- 1. Strongly support
 - 2. Somewhat support
 - 3. Somewhat oppose
 - 4. Strongly oppose
 - 98. Don't know
 - 99. Prefer not to answer
-

Q41d. For each of the following, please indicate if you support or oppose preserving MORE of the following types of land in the Valley? [RANDOMIZED]

Land for regional parks

- 1. Strongly support
 - 2. Somewhat support
 - 3. Somewhat oppose
 - 4. Strongly oppose
 - 98. Don't know
 - 99. Prefer not to answer
-

Q41e. For each of the following, please indicate if you support or oppose preserving MORE of the following types of land in the Valley? [RANDOMIZED]

Land for neighborhood parks

1. Strongly support
 2. Somewhat support
 3. Somewhat oppose
 4. Strongly oppose
 98. Don't know
 99. Prefer not to answer
-

Q58 Question Set has 7 items which were asked in randomized order as follows:

Q58RanOrd – shows the order the 7 items were asked (as one text variable)

Q58Order1 – shows the item that was asked FIRST

Q58Order2 – shows the item that was asked SECOND

Q58Order3 – shows the item that was asked THIRD

Q58Order4 – shows the item that was asked FOURTH

Q58Order5 – shows the item that was asked FIFTH

Q58Order6 – shows the item that was asked SIXTH

Q58Order7 – shows the item that was asked SEVENTH

Q58a. Do you support or oppose each of the following policies that have been proposed to decrease residential development on the fringe or outskirts of Valley cities?
[RANDOMIZED]

Setting boundaries to limit the areas where houses can be built

1. Strongly support
 2. Somewhat support
 3. Somewhat oppose
 4. Strongly oppose
 98. Don't know
 99. Prefer not to answer
-

Q58x1. Do you support or oppose each of the following policies that have been proposed to decrease residential development on the fringe or outskirts of Valley cities?
[RANDOMIZED]

Purchase of development rights from farmers by government or nonprofits to preserve farmland or open space

- 1. Strongly support
 - 2. Somewhat support
 - 3. Somewhat oppose
 - 4. Strongly oppose
 - 98. Don't know
 - 99. Prefer not to answer
-

Q58b. Do you support or oppose each of the following policies that have been proposed to decrease residential development on the fringe or outskirts of Valley cities?
[RANDOMIZED]

Limiting the number of new building permits

- 1. Strongly support
 - 2. Somewhat support
 - 3. Somewhat oppose
 - 4. Strongly oppose
 - 98. Don't know
 - 99. Prefer not to answer
-

Q58c. Do you support or oppose each of the following policies that have been proposed to decrease residential development on the fringe or outskirts of Valley cities?
[RANDOMIZED]

Designing more compact communities all across the region

- 1. Strongly support
 - 2. Somewhat support
 - 3. Somewhat oppose
 - 4. Strongly oppose
 - 98. Don't know
 - 99. Prefer not to answer
-

Q58d. Do you support or oppose each of the following policies that have been proposed to decrease residential development on the fringe or outskirts of Valley cities?
[RANDOMIZED]

Improving the quality of public schools in the central cities

- 1. Strongly support
 - 2. Somewhat support
 - 3. Somewhat oppose
 - 4. Strongly oppose
 - 98. Don't know
 - 99. Prefer not to answer
-

Q58e. Do you support or oppose each of the following policies that have been proposed to decrease residential development on the fringe or outskirts of Valley cities?
[RANDOMIZED]

Educating the public about the benefits of conserving land

- 1. Strongly support
 - 2. Somewhat support
 - 3. Somewhat oppose
 - 4. Strongly oppose
 - 98. Don't know
 - 99. Prefer not to answer
-

Q58f. Do you support or oppose each of the following policies that have been proposed to decrease residential development on the fringe or outskirts of Valley cities?
[RANDOMIZED]

Imposing fees on homes built on the outskirts of the Valley

- 1. Strongly support
 - 2. Somewhat support
 - 3. Somewhat oppose
 - 4. Strongly oppose
 - 98. Don't know
 - 99. Prefer not to answer
-

Q48. Below are five short descriptions of types of landscaping. Which one do you most prefer as a front yard landscape?

- 1. A yard with grass, some shrubs and leafy trees
- 2. A yard with some grass and some crushed stone with plants, shrubs and trees

3. A yard with crushed stone and native desert plants and trees
4. A yard with large areas of hard surface, such as flagstone or finished concrete, and plants and shrubs in containers
9. A yard with patches of bare soil and little or no grass and trees
5. Other (SPECIFY) [OPEN END- SEE Q48oth]
98. Don't know
99. Prefer not to answer

[SKIP TO Q50 IF Q16 = 4, 5, 7, 8, 9]

 Q48oth Other [OPEN ENDED; VERBATIM RESPONSES]

Q49. Of the five landscape types [you just read], which one most resembles your front yard?

1. A yard with grass, some shrubs and leafy trees
2. A yard with some grass and some crushed stone with plants, shrubs and trees
3. A yard with crushed stone and native desert plants and trees
4. A yard with large areas of hard surface, such as flagstone or finished concrete, and plants and shrubs in containers
9. A yard with patches of bare soil and little or no grass and trees
5. Other (SPECIFY) [OPEN END- SEE Q49oth]
98. Don't know
99. Prefer not to answer

[skip pattern: those responding to Q16 with townhouse or patio home/3 or condo/4, were not posed this question]

 Q49oth Other [OPEN ENDED; VERBATIM RESPONSES]

Q50. Which one of the landscape types do you most prefer as a backyard landscape?

1. A yard with grass, some shrubs and leafy trees
2. A yard with some grass and some crushed stone with plants, shrubs and trees
3. A yard with crushed stone and native desert plants and trees
4. A yard with large areas of hard surface, such as flagstone or finished concrete, and plants and shrubs in containers
9. A yard with patches of bare soil and little or no grass and trees
5. Other (SPECIFY) [OPEN END- SEE Q50oth]
98. Don't know
99. Prefer not to answer

IF Q16 = 4, 5, 7, 8, 9 SKIP TO Q229.

Q50oth Other [OPEN ENDED; VERBATIM RESPONSES]

Q51. Which one of the landscape types most resembles your back yard?

1. A yard with grass, some shrubs and leafy trees
2. A yard with some grass and some crushed stone with plants, shrubs and trees
3. A yard with crushed stone and native desert plants and trees
4. A yard with large areas of hard surface, such as flagstone or finished concrete, and plants and shrubs in containers
9. A yard with patches of bare soil and little or no grass and trees
5. Other (SPECIFY) [OPEN END- SEE Q51oth]
98. Don't know
99. Prefer not to answer

[skip pattern: those responding to Q16 with townhouse or patio home/3 or condo/4, were not posed this question]

Q51oth Other [OPEN ENDED; VERBATIM RESPONSES]

Q224: Do you feel your neighbors maintain their yards and landscaping better, about the same, or not as well as they did before the economic downturn in 2007?

1. Better than before 2007
2. About the same
3. Not as well as before 2007
98. Don't know
99. Prefer not to answer

Q225. Which, if any, of the following changes have you made in the last five years to this home that you live in now? Please select all that apply. [ALLOW MULTIPLE RESPONSES]

ANSWERS ARE CODED AS "1=YES", 0=NO"

- | | |
|----------------------------------|--------|
| 1. Plant trees | Q225_1 |
| 2. Plant grass | Q225_2 |
| 3. Remove trees | Q225_3 |
| 4. Remove grass | Q225_4 |
| 5. Remove blacktop or cement | Q225_5 |
| 6. Convert to lighter color roof | Q225_6 |
| 7. Add more insulation | Q225_7 |
| 8. Add weatherstripping | Q225_8 |

- | | |
|---|---------|
| 9. Seal ducts | Q225_9 |
| 10. Upgrade windows or doors | Q225_10 |
| 11. Install solar panels | Q225_11 |
| 12. Other (SPECIFY) [OPEN END- SEE Q225oth] | Q225_12 |
| 13. None of these | Q225_13 |
| 98. Don't know | Q225_98 |
| 99. Prefer not to answer | Q225_00 |

Q225oth Other [OPEN ENDED; VERBATIM RESPONSES]

Q226: Have you made any of the following changes to your home or yard to retain rain water on your property? Please select all that apply. [ALLOW MULTIPLE RESPONSES]

ANSWERS ARE CODED AS "1=YES", 0=NO"

- | | |
|----------------------------------|---------|
| 1. Rain garden | Q226_1 |
| 2. Rain barrel | Q226_2 |
| 3. Altered the slope of the yard | Q226_3 |
| 4. None of these | Q226_4 |
| 98. Don't know | Q226_98 |
| 99. Prefer not to answer | Q226_99 |

Q227: Do you or the people who take care of your property adjust the amount of water applied to your yard based on season or storms? Please select all that apply. [ALLOW MULTIPLE RESPONSES]

ANSWERS ARE CODED AS "1=YES", 0=NO"

- | | |
|---------------------------------------|---------|
| 1. Reduce water following heavy rain | Q227_1 |
| 2. Reduce water in winter | Q227_2 |
| 3. Do not adjust amount of water | Q227_3 |
| 4. Do not apply any water to the yard | Q227_4 |
| 98. Don't know | Q227_98 |
| 99. Prefer not to answer | Q227_99 |

Q228: How often do you add fertilizer to your lawn or outdoor plants,?

1. More often than once a month
2. Monthly
3. Every few months
4. Less than once a year
5. Never

- 6. Do not have a lawn or outdoor plants
- 98. Don't know
- 99. Prefer not to answer

RESUME ASKING ALL

Q229: Do you grow any food for your household at home?

- 1. Yes **ASK Q230**
- 2. No **SKIP TO Q231**
- 98. Don't know **SKIP TO Q231**
- 99. Prefer not to answer **SKIP TO Q231**

Q230: Which of the following do you have at home for growing food? Please select all that apply. **[ALLOW MULTIPLE RESPONSES]**

ANSWERS ARE CODED AS "1=YES", 0=NO"

- 1. Vegetable garden **Q230_1**
- 2. Fruit trees **Q230_2**
- 3. Plants in pots **Q230_3**
- 4. Poultry or other animals **Q230_4**
- 5. Other (SPECIFY) [OPEN END- SEE Q230oth] **Q230_5**
- 6. None of these **Q230_6**
- 98. Don't know **Q230_98**
- 99. Prefer not to answer **Q230_99**

Q230oth Other [OPEN ENDED; VERBATIM RESPONSES]

Q231: Which of the following places do you or other members of your household go to get food? Please select all that apply. **[ALLOW MULTIPLE RESPONSES]**

ANSWERS ARE CODED AS "1=YES", 0=NO"

- 1. Grocery store or supermarket or wholesaler **Q231_1**
- 2. Corner store or convenience store **Q231_2**
- 3. Drug store **Q231_3**
- 4. Dollar store **Q231_4**
- 5. Farmers' market **Q231_5**
- 6. Private garden **Q231_6**

- | | | |
|---|--------------|---------|
| 7. Community garden | | Q231_7 |
| 8. Food Bank or Soup Kitchen | | Q231_8 |
| 9. Church or Community Center | | Q231_9 |
| 10. Other (SPECIFY) [OPEN END- SEE Q231oth] | | Q231_10 |
| 98. Don't know | SKIP TO Q233 | Q231_98 |
| 99. Prefer not to answer | SKIP TO Q233 | Q231_99 |

 Q231oth Other [OPEN ENDED; VERBATIM RESPONSES]

Q232: Of the places you mentioned, where do you most frequently get food?

**ONLY ITEMS 1-10 SELECTED AT Q231 WERE SHOWN HERE.
 IF ONLY ONE ITEM WAS SELECTED AT Q231, THE PROGRAM INSERTED
 THAT ITEM AT Q232, AND THE QUESTION WAS NOT ASKED OF THE
 RESPONDENT.**

1. Grocery store or supermarket or wholesaler
2. Corner store or convenience store
3. Drug store
4. Dollar store
5. Farmers' market
6. Private garden
7. Community garden
8. Food Bank or Soup Kitchen
9. Church or Community Center
10. Other (SPECIFY)

 Q233: How far from your home is the place you most frequently get food?

Q233a. Record distance in miles -----

OR

Q233b. Record distance in km -----

1. Don't know
2. Prefer not to answer

 Q234: Which of these statements best describes your household in the last 12 months?

1. We always have enough to eat and the kinds of food we want;
2. We have enough to eat but not always the kinds of food we want;
3. Sometimes we don't have enough to eat;

- 4. Often we don't have enough to eat.
 - 98. Don't know
 - 99. Prefer not to answer
-

Q235: Over the last week, how many servings of fruit and vegetables did you eat each day? A serving of fruit or vegetables is defined as ½ cup of a fruit or vegetable that is cut-up fresh, frozen, canned, or juiced.

Enter number of servings each day ----- **RANGE 0-20**

- 98. Don't know
 - 99. Prefer not to answer
-

Q236: Over the last week, how many days did you exercise for 30 minutes or more? Exercise is defined as moderate-intensity aerobic activity (for example, brisk walking).

Enter number of days last week ----- **RANGE 0-7**

- 98. Don't know
 - 99. Prefer not to answer
-

Q60. Do you think that the air quality in the Valley is greatly improving, improving a little, staying the same, getting a little worse or getting much worse?

- 4226- Greatly improving
 - 2- Improving a little
 - 3- Staying the same
 - 4- Getting a little worse
 - 5- Getting much worse
 - 98- Don't know
 - 99- Refuse to answer
-

Q61. In your opinion, is the air quality in your neighborhood much better, a little better, about the same, a little worse or much worse than most other neighborhoods in the Valley?

- 4226- Much better

- 2- A little better
 - 3- About the same
 - 4- A little worse
 - 5- Much worse
 - 98- Don't know
 - 99- Refuse to answer
-

Q237: During the past year, did you experience coughing, wheezing, shortness of breath, chest tightness or phlegm when you did NOT have a cold or respiratory infection?

- 1. Yes
 - 2. No
 - 98. Don't know
 - 99. Prefer not to answer
-

Q238: During the past year, did someone else who lives in your household experience coughing, wheezing, shortness of breath, chest tightness or phlegm when they did NOT have a cold or respiratory infection?

- 1. Yes
 - 2. No
 - 98. Don't know
 - 99. Prefer not to answer
-

Q63. Has a doctor ever told you or anyone else in your household that they have asthma?

- 4226- Yes
 - 2- No
 - 98- Don't know
 - 99- Refuse to answer
-

Q71 Question Set has 7 items which were asked in randomized order as follows:

Q71RanOrd – shows the order the 7 items were asked (as one text variable)

Q71Order1 – shows the item that was asked FIRST

Q71Order2 – shows the item that was asked SECOND

Q71Order3 – shows the item that was asked THIRD

Q71Order4 – shows the item that was asked FOURTH

Q71Order5 – shows the item that was asked FIFTH

Q71Order6 – shows the item that was asked SIXTH

Q71Order7 – shows the item that was asked SEVENTH

Q71a. Do you support or oppose each of the following policies that have been suggested to deal with air pollution? [RANDOMIZED]

Banning leaf blowers on high-pollution days

1. Strongly support
 2. Somewhat support
 3. Somewhat oppose
 4. Strongly oppose
 98. Don't know
 99. Prefer not to answer
-

Q71b. Do you support or oppose each of the following policies that have been suggested to deal with air pollution? [RANDOMIZED]

Implementing stricter air quality rules for construction and agricultural sites

1. Strongly support
 2. Somewhat support
 3. Somewhat oppose
 4. Strongly oppose
 98. Don't know
 99. Prefer not to answer
-

Q71x1. Do you support or oppose each of the following policies that have been suggested to deal with air pollution? [RANDOMIZED]

Implementing stricter air quality rules that limit emissions from industrial facilities.

1. Strongly support
2. Somewhat support
3. Somewhat oppose
4. Strongly oppose
98. Don't know
99. Prefer not to answer

Q71c. Do you support or oppose each of the following policies that have been suggested to deal with air pollution? [RANDOMIZED]

Increasing the price of gasoline

- 1. Strongly support
- 2. Somewhat support
- 3. Somewhat oppose
- 4. Strongly oppose
- 98. Don't know
- 99. Prefer not to answer

Q71d. Do you support or oppose each of the following policies that have been suggested to deal with air pollution? [RANDOMIZED]

Developing clean sources of energy

- 1. Strongly support
- 2. Somewhat support
- 3. Somewhat oppose
- 4. Strongly oppose
- 98. Don't know
- 99. Prefer not to answer

Q71e. Do you support or oppose each of the following policies that have been suggested to deal with air pollution? [RANDOMIZED]

Improving public transportation

- 1. Strongly support
 - 2. Somewhat support
 - 3. Somewhat oppose
 - 4. Strongly oppose
 - 98. Don't know
 - 99. Prefer not to answer
-

Q71f. Do you support or oppose each of the following policies that have been suggested to deal with air pollution? [RANDOMIZED]

Educating the public about ways to clean up the air

1. Strongly support
 2. Somewhat support
 3. Somewhat oppose
 4. Strongly oppose
 98. Don't know
 99. Prefer not to answer
-

Q72. The next questions are about the climate.

In your opinion, do you think that over time the temperature in the Valley is getting a lot cooler, a little cooler, a little hotter, a lot hotter, or is it staying about the same?

1. A lot cooler
 2. A little cooler
 3. A little hotter
 4. A lot hotter
 5. About the same
 98. Don't know
 99. Prefer not to answer
-

Q73. The next few questions refer to last summer, meaning the summer of 2010 from June through September.

During the summer of 2010, do you think your neighborhood was a lot cooler, a little cooler, a little hotter, or a lot hotter than most other neighborhoods in the Valley or do you think it was about the same temperature as other neighborhoods?

(Respondents after 9/22/11 were asked about Summer 2011)

1. A lot cooler
2. A little cooler
3. A little hotter
4. A lot hotter
5. About the same
98. Don't know

99. Prefer not to answer

Q74. About how much time did you spend away from the Valley during the summer of 2010?
(Respondents after 9/22/11 were asked about Summer 2011)

- 4226- Less than a month
 - 2- 1 month
 - 3- 2 months
 - 4- 3 months
 - 5- Entire 4 month period
 - 6- Did not leave at all
 - 7- Did not live in Valley in summer 2010 [SKIP TO Q241]
 - 98. Don't know
 - 99. Prefer not to answer
-

Q75. How often, if at all, did your job require you to work outdoors during the summer of 2010? (Respondents after 9/22/11 were asked about Summer 2011)

- 4226- All of the time
 - 2- Frequently
 - 3- Sometimes
 - 4- Not at all
 - 5- Did not live in Valley in summer 2010 [SKIP TO Q241]
 - 98. Don't know
 - 99. Prefer not to answer
-

Q239: During last summer (2010), did you have symptoms related to heat or high temperatures such as leg cramps, dry mouth, dizziness, fatigue, fainting, rapid heartbeat or hallucinations?
(Respondents after 9/22/11 were asked about Summer 2011)

- 1. Yes
 - 2. No
 - 98. Don't know
 - 99. Prefer not to answer
-

Q240: During last summer (2010) did anyone else who lives in your household have symptoms related to heat or high temperatures such as leg cramps, dry mouth, dizziness, fatigue, fainting, rapid heartbeat or hallucinations? (Respondents after 9/22/11 were asked about Summer 2011)

- 1. Yes

- 2. No
 - 98. Don't know
 - 99. Prefer not to answer
-

Q80. Which of the following did you use to cool your home last summer? [ALLOW MULTIPLE RESPONSES]

ANSWERS ARE CODED AS "1=YES", 0=NO"

- | | |
|---|--------|
| 1- Central air conditioner | Q80_1 |
| 2- Window air conditioner | Q80_2 |
| 3- Swamp or evaporative cooler | Q80_3 |
| 4- Fans | Q80_4 |
| 5- Awning, shades and/or shutters | Q80_5 |
| 6- Misters | Q80_6 |
| 7- Trees and plants | Q80_7 |
| 8- None | Q80_8 |
| 9- Other (SPECIFY) [OPEN END –SEE Q80oth] | Q80_9 |
| 98. Don't know | Q80_98 |
| 99. Prefer not to answer | Q80_99 |
-

Q80oth Other [OPEN ENDED; VERBATIM RESPONSES]

Q241. Where do you feel most at risk to heat related illness?

- 1. Indoors
 - 2. Outdoors
 - 98. Don't know
 - 99. Prefer not to answer
-

Q242. Have you ever called 911 or visited the hospital for heat-related illness?

- 1. Yes
 - 2. No
 - 98. Don't know
 - 99. Prefer not to answer
-

Q243. Are you ever too hot inside your home during the hot season?

- 1. Yes
- 2. No
- 98. Don't know
- 99. Prefer not to answer

Q244. Do any of the following prevent you from using your air-conditioning *when the weather is hot*? Please select all that apply. [ALLOW MULTIPLE RESPONSES]

ANSWERS ARE CODED AS "1=YES", 0=NO"

- | | |
|--|---------|
| 1. Cost of electricity | Q244_1 |
| 2. Doesn't work | Q244_2 |
| 3. Cost of repairs | Q244_3 |
| 4. Noise | Q244_4 |
| 5. Have a swamp cooler | Q244_5 |
| 6. Other (SPECIFY) [OPEN END –SEE Q244oth] | Q244_6 |
| 7. Nothing prevents me | Q244_7 |
| 8. I do not have air conditioning | Q244_8 |
| 98. Don't know | Q244_98 |
| 99. Prefer not to answer | Q244_99 |

Q244oth Other [OPEN ENDED; VERBATIM RESPONSES]

Q245. Do you strongly trust, somewhat trust, somewhat distrust or strongly distrust scientists at the state universities in Arizona as a source of information about climate and weather in the Valley?

- 1. Strongly trust
- 2. Somewhat trust
- 3. Somewhat distrust
- 4. Strongly distrust
- 98. Don't know
- 99. Prefer not to answer

Q84 Question Set has 8 items which were asked in randomized order as follows:

- Q84RanOrd – shows the order the 8 items were asked (as one text variable)
- Q84Order1 – shows the item that was asked FIRST
- Q84Order2 – shows the item that was asked SECOND
- Q84Order3 – shows the item that was asked THIRD
- Q84Order4 – shows the item that was asked FOURTH

Q84Order5 – shows the item that was asked FIFTH
Q84Order6 – shows the item that was asked SIXTH

Q84a. Do you support or oppose each of the following policies that have been suggested to deal with rising temperatures? [RANDOMIZED]

Increasing the number of trees planted along public streets

1. Strongly support
 2. Somewhat support
 3. Somewhat oppose
 4. Strongly oppose
 98. Don't know
 99. Prefer not to answer
-

Q84b. Do you support or oppose each of the following policies that have been suggested to deal with rising temperatures? [RANDOMIZED]

Requiring light-colored reflective roofs on all homes and buildings

1. Strongly support
 2. Somewhat support
 3. Somewhat oppose
 4. Strongly oppose
 98. Don't know
 99. Prefer not to answer
-

Q84d. Do you support or oppose each of the following policies that have been suggested to deal with rising temperatures? [RANDOMIZED]

Increasing the price of electricity

1. Strongly support
 2. Somewhat support
 3. Somewhat oppose
 4. Strongly oppose
 98. Don't know
 99. Prefer not to answer
-

Q84e. Do you support or oppose each of the following policies that have been suggested to deal with rising temperatures? [RANDOMIZED]

Educating the public about how they can help keep temperatures from rising

1. Strongly support
 2. Somewhat support
 3. Somewhat oppose
 4. Strongly oppose
 98. Don't know
 99. Prefer not to answer
-

Q84f. Do you support or oppose each of the following policies that have been suggested to deal with rising temperatures? [RANDOMIZED]

Engineering new paving materials that absorb less heat

1. Strongly support
 2. Somewhat support
 3. Somewhat oppose
 4. Strongly oppose
 98. Don't know
 99. Prefer not to answer
-

Q84x1. Do you support or oppose each of the following policies that have been suggested to deal with rising temperatures? [RANDOMIZED]

Federal law to raise average gas mileage for new cars and trucks to 35.5 miles per gallon by 2016

1. Strongly support
 2. Somewhat support
 3. Somewhat oppose
 4. Strongly oppose
 98. Don't know
 99. Prefer not to answer
-

Q246. How is the bill paid for electricity used in your household?

1. We pay based on electric bills from the service provider **ASK Q247**
 2. Our electric bill is covered by our rent. **SKIP TO Q248**
 3. Our electric bill is paid through fees charged by HOA **SKIP TO Q248**
 98. Don't know **SKIP TO Q248**
 99. Prefer not to answer **SKIP TO Q248**
-

THE PROGRAM RANDOMLY ASSIGNED EACH RESPONDENT A VALUE OF EITHER "15%" OR "30%". THIS ASSIGNMENT IS SHOWN IN THE DATA IN THE VARIABLE NAMED "ELECTPICK1". THE CORRESPONDING PERCENTAGE IS USED AS AN INSERT FOR Q247.

THE PROGRAM RANDOMLY ASSIGNED EACH RESPONDENT A VALUE OF "5", "10", "25", OR "30". THIS ASSIGNMENT IS SHOWN IN THE DATA IN THE VARIABLE NAMED "ELECTPICK2". THE CORRESPONDING PERCENTAGE IS USED AS AN INSERT FOR Q247.

Q247. Current energy policy in Arizona is seeking to increase the amount of electricity generated from renewable sources (such as solar and wind-power). The program would assure that **ELECTPICK1 (15/30)** percent of the state's energy will come from renewable sources. It would require an average increase of **ELECTPICK2 (5, 10, 25, 30)** percent to your monthly energy bill. Would you support it?

1. Yes
 2. No
 98. Don't know
 99. Prefer not to answer
-

Q248. How familiar are you with the term "sustainability"?

1. Very familiar
 2. Somewhat familiar
 3. Not very familiar
 4. Not at all familiar
 98. Don't know
 99. Prefer not to answer
-

Q85. The following questions are for statistical purposes.

First, in what year were you born?

[NUMERIC OPEN END – actual number, yyyy]

4226- Prefer not to answer

Q86. Were you born...

- 4226- In the Valley
 - 2- In Arizona but not in the Valley
 - 3- In the US but not in Arizona
 - 4- In Mexico
 - 5- In another country outside of the U.S.
 - 99- Refuse to answer
-

Q87. How many years have you lived at your current address? If less than a year, enter the number of months; if more than a year, round up.

Q87YEARS: [NUMERIC OPEN END – actual number of year, 0-97]

Q87MONTHS: [NUMERIC OPEN END – actual number of months, 1-11]

Q88. Before moving to this address, did you live...

- | | |
|---|--------------------|
| 1. Somewhere else in the Valley | ASK Q89 |
| 2. In Arizona but outside of the Valley | SKIP TO Q90 |
| 3. In another state | SKIP TO Q90 |
| 4. Outside of the U.S. | SKIP TO Q90 |
| 99. Prefer not to answer | SKIP TO Q90 |
-

Q89. How many different places have you lived in the Valley?

[NUMERIC OPEN END – actual number, 0-97]

- 98 – Don't know
 - 99 – Refuse to answer
-

Q90. If you could live where you want, would you...

1. Stay at your current address
 2. Move from your current address to another Valley location
 3. Move to another location in Arizona
 4. Move outside of Arizona
 98. Don't know
 99. Prefer not to answer
-

Q93. What is your current marital status?

1. Married
 2. Single
 3. Divorced
 4. Widowed
 5. Separated
 6. Living with a partner but not married
 98. Don't know
 99. Prefer not to answer
-

Q94. How many people currently live in your household including yourself? "Living in your household" means people who slept and ate meals there for at least two weeks of the previous four weeks.

[NUMERIC OPEN END – actual number, 1-97]

[IF ANSWER IS 1 SKIP TO Q100]

98 – Don't know [SKIP TO Q100]

99 – Prefer not to answer [SKIP TO Q100]

Q95. How many people age 18 and older including yourself live in your household?

[NUMERIC OPEN END – actual number, 0- 97]

98- Don't know [SKIP TO Q100]

99- Prefer not to answer [SKIP TO Q100]

Q96. How many children between age 6 and age 17 live in your household?

[NUMERIC OPEN END – actual number, 0-97]

98- Don't know [SKIP TO Q100]

99- Prefer not to answer [SKIP TO Q100]

THE PROGRAM COMPUTED A NUMERIC VARIABLE (“KIDSLEFT” = Q94-Q95-Q96) AND INSERTED IT AT Q97. IF KIDSLEFT <= 0, SKIP Q97.

Q97. So that leaves (**KIDSLEFT**) children under age 6 who live in your household, correct?

If this is incorrect, please select “No” and enter the correct number in the box that will appear on the next screen.

1. Yes
2. No
98. Don't know
99. Prefer not to answer

Q97VERIFY. How many children UNDER AGE 6 live in your household? Please enter a whole number.

[NUMERIC OPEN END – actual number, 0-97]

Q100. Which of the following best describes your current employment or labor force status? (CHOOSE ONLY ONE)

1. Work full-time
2. Work part-time
9. Unemployed (out of work but looking for work) **SKIP TO Q250**
3. A full-time student
4. A homemaker
5. Retired
6. Other (SPECIFY) [OPEN END – SEE Q100oth]
7. Prefer not to answer

Q100oth Other [OPEN ENDED; VERBATIM RESPONSES]

Q249: Have you been unemployed (out of work but looking for work) at any time since the economic downturn in 2007?

1. Yes
 2. No
 98. Don't know
 99. Prefer not to answer
-

Q250: What type of transportation do you use most frequently?

1. Drive a car, van or truck
 2. Ride a motorcycle
 4. Ride a bus
 12. Ride the light rail
 5. Ride a bicycle
 6. Walk
 7. Taxi
 9. Other (SPECIFY) [OPEN END –SEE Q250oth]
 98. Don't know
 99. Prefer not to answer
-

Q250oth Other [OPEN ENDED; VERBATIM RESPONSES]

Q104. What is the highest level of school you have had a chance to complete?

1. Grades 1-8
 2. Grades 9-11
 3. High school
 4. Community college
 5. Vocational/technical school
 6. College (bachelor's degree)
 7. Graduate/professional school (master's degree, Ph.D., M.D., J.D., etc.)
 99. Prefer not to answer
-

Q105. Do you consider yourself to be Hispanic, Latino, Mexican, Mexican-American or of Spanish background?

- | | |
|-------------------------|---------------------|
| 1. Yes | SKIP TO Q107 |
| 2. No | ASK Q106 |
| 3. Prefer not to answer | ASK Q106 |

Q106. With which racial or ethnic group do you identify yourself?
[ALLOW MULTIPLE RESPONSES]

ANSWERS ARE CODED AS "1=YES", 0=NO"

- | | |
|---|---------|
| 1. White/Anglo | Q106_1 |
| 2. African American | Q106_2 |
| 3. Asian or Asian American | Q106_3 |
| 4. American Indian or Native American | Q106_4 |
| 5. Other (SPECIFY) [OPEN END – SEE Q106oth] | Q106_5 |
| 99. Prefer not to answer | Q106_99 |

Q106oth Other [OPEN ENDED; VERBATIM RESPONSES]

Q107. Some household income categories are listed below. Please choose a category which represents the total combined income before taxes for all the people in your household in 2010.

1. \$20,000 and under
2. \$20,001-40,000
3. \$40,001-60,000
4. \$60,001-80,000
5. \$80,001-100,000
6. \$100,001-120,000
7. \$120,001-140,000
8. \$140,001-160,000
9. \$160,001-180,000
10. \$180,001-200,000
11. More than \$200,000
99. Prefer not to answer

109. How would you describe yourself politically? Would you say you are very conservative, somewhat conservative, moderate, somewhat liberal or very liberal?

1. Very conservative
2. Somewhat conservative
3. Moderate
4. Somewhat liberal
5. Very liberal

- 98. Don't know
 - 99. Prefer not to answer
-

Q110. In general, compared to other people your age, would you say your health is...

- 1. Excellent
 - 2. Good
 - 3. Fair
 - 4. Poor
 - 98. Don't know
 - 99. Prefer not to answer
-

Q111. Are you...

- 1. Male
 - 2. Female
 - 99. Prefer not to answer
-

The last two questions are used to calculate an index that is related to health, nutrition, and even the type of neighborhood you live in.

Q249. How tall are you?

Enter height in feet and inches

[NUMERIC OPEN END]
HEIGHTFEET = FEET
HEIGHTINCHES = INCHES

Or

Enter height in centimeters

[NUMERIC OPEN END]
HEIGHTCENT

- 1. Don't know
 - 2. Prefer not to answer
-

Q250: What do you normally weigh? (If you are a pregnant women, report pre-pregnancy weight)

Enter weight in pounds [NUMERIC OPEN END]
WEIGHTPOUNDS

Or

Enter weight in kilograms [NUMERIC OPEN END]
WEIGHTKILOGRAMS

1. Don't know
2. Prefer not to answer

For respondents that were offered Incentive Options = G/H/I/J

CHOICE: Thank you for your participation in the 2011 Phoenix Area Social Survey. Those are all the questions we have for you. As promised, you can choose to receive a check for { INCENTIVEAMOUNT }, or we will donate { INCENTIVEAMOUNT } in your name to the First Food Bank Alliance.

1. Send me the check
2. Make a donation in my name

END OF SURVEY

COMPUTED VARIABLES (BASED ON ANSWERS TO SURVEY)

AGE: Age in years; computed as (2011 – Q85 Year)

Q87NET: Years at current address; computed as (Q87YEARS + Q87MONTHS), rounded up if Q87MONTHS >=6.

PLACESINVALLEY: Number of places lived in the Valley; computed as a net of Q88 and Q89: IF Q88 = 2,3,4,99 SET = 1; ELSE, SET = ANSWER GIVEN AT Q89.

KIDS6to17: Count of children age 6-17 from Q96.

KIDSUnder6: Count of children under age 6, from Q97 and Q97VERIFY.

Q100RECODE: Employment status recode; answers from Q100oth were coded:

- 4226 Work full time
- 2 Work part time
- 3 Full time student
- 4 Homemaker
- 5 Retired
- 6 Other
- 7 Disabled
- 9 Unemployed
- 99 Refused

RACENET: Race recode; answers from Q106oth were coded; Q105 and Q106 combined into a single variable.

- 01 White Only Q106_1 =1, all others = 0
- 02 Black Only Q106_2 =1, all others = 0
- 03 Asian Only Q106_3 =1, all others = 0
- 04 American Indian Only Q106_4 =1, all others = 0
- 05 Other Q106_5 =1 and coding could not be resolved
- 06 More than one race **Answered Yes to more than one category above**
- 07 Hispanic Any Race Q105 = 1
- 99 Refused Q105 and Q106 were refused

HEIGHTRECODE: Height converted to inches.

WEIGHTRECODE: Weight converted to pounds.

BMI: Body Mass computed; **Formula = weight (lb) / [height (in)]² x 703**

BMIStatus: Body Mass Index Coded per CDC guidelines:

http://www.cdc.gov/healthyweight/assessing/bmi/adult_bmi/index.html

- 1 Below 18.5 – Underweight
- 2 18.5 to 24.9 – Normal
- 3 25.0 to 29.9 – Overweight
- 4 30.0 and above – Obese

RACENET2: Race recode; there were 10 respondents in RACENET (above) that were “More than one race”: they answered either “White and Black” (5), “White and American Indian” (4),

or “White and Asian” (1). For this variable, those 10 were placed into the MINORITY category they selected, such that the “More than one race” category is eliminated.

APPENDIX A
Appendix A

Sampled Neighborhoods
PHOENIX AREA SOCIAL SURVEY 2011
New PASS 2011 sample is orange.

CAP LTER Point	Census 2000 Tract	BG	City	Cross Streets
Low income, Core				< \$35,000 annual household income in 2000 U.S. Census
T15	1090	6	Phoenix	Indian School & I-17
U18	1157	2	Phoenix	Broadway & 19 Av
V16	1116.02	4	Phoenix	McDowell & 16 St
X17	3188	2	Tempe	University & Roosevelt
AA18	4219.02	2	Mesa	Broadway & Horne
7 Eleven	1148	2	Phoenix	W Buckeye Rd & S 7 th Ave

Low income, Suburban				< \$35,000 annual household income in 2000 U.S. Census
R15	927.03	1	Glendale	Missouri & 67 th Ave
T14	1060	1	Phoenix	Northern & 19 Av
Y18	3192	3	Tempe	Apache & Price
Z18	4221.04	1	Mesa	Dobson & 8 th Ave
AB18	4217	4	Mesa	Main & Lindsay

Middle to high income, Core				>= \$35,000 and <= \$70,000 annual household income in 2000 U.S. Census
U15	1088.02	3	Phoenix	Camelback & Central
U16	1118	5	Phoenix	Thomas & Central
X16	2180	4	Scottsdale	Thomas & 64 St
Z21	5230.02	4	Chandler	Chandler & Alma School
Enc Flux	1119	2	Phoenix	McDowell & 7Av
Tower	1101	4	Phoenix	Thomas & 39 th Ave
NCAR	1163	2	Phoenix	Southern Ave and 16 th St

Middle income, Suburban				>= \$35,000 and <= \$70,000 annual household income in 2000 U.S. Census
R13	719.10	3	Peoria	Cactus & 75 th Ave
S11	1042.25	3	Phoenix	Bell & 51 Av

V14	1063	1	Phoenix	Northern & 16 St
Z20	4222.10	2	Chandler	Elliot & Pennington
AB19	4224.02	2	Gilbert	Elliot & Lindsay
S15	1094	1	Phoenix	Camelback & 55 Av

<= \$70,000
annual household
income in 2000
U.S. Census

Low to middle income,
Fringe

R18		2	Phoenix	Lower Buckeye & 59 th Ave
Q15	820.11	1	Phoenix	Camelback & 91 st Ave
S19	1166.01	2	Laveen	Baseline & 47 Av
V11	303.59	1	Phoenix	Beardsley & 20 St
AF19	4226.01	1	Mesa	Crismon & Elliot
Power Ranch	5227.45	3	Gilbert	Power Rd & Queen Creek Rd

> \$70,000 annual
household
income in 2000
U.S. Census

High income,
Suburban

R11	303.51	3	Glendale	Union Hills & 75 th Ave
W15	1079	2	Phoenix	McDonald & 44 St
AA17	4203.01	2	Mesa	McKellips & Stapley
AA20	5227.18	2	Chandler	Ray & McQueen
AB20	4224.04	2	Gilbert	Warner & Gilbert

> \$70,000 annual
household
income in 2000
U.S. Census

High income, Fringe

U21	1167.28	1	Phoenix	Chandler & Central
W9	303.63	1	Phoenix	Dynamite & Tatum
Y10	2168.24	1	Scottsdale	Grayhawk & Scottsdale Rd
AA9	2168.28	1	Scottsdale	Jomax & 116 St
AE23	5227.47	1	Queen Creek	Riggs & Ellsworth

Retirement

O11	405.06	2	Other	Bell & R.H.Johnson
P13	716	1	Youngtown	Peoria & 111 th Ave
Y6	304	1	Carefree	Cave Creek & Scottsdale Rd
Z23	5227.08	1	Other	Riggs & Alma School
AE18	4226.10	1	Mesa	Southern & Hawes

Key:

	PASS 2006 survey point
	New neighborhood for PASS 2011

Appendix B
PASS 2011: Household Response Rates for Total Survey and for Each Surveyed Area

CODE	Total	7-11	AA17	AA18	AA20	AA9	AB18	AB19	AB20	AE18	AE23	AF19	ENC	Flux Tower	NCAR
I	806	13	14	11	20	13	18	20	20	14	17	20	20	20	11
INEL	5	1													
NC	613	11	8	30	12	3	14	6	22	11	17	12	11	8	19
O	171	12	3	5		4	3	1	1	4	8	1	2	6	4
P	17	1		1		1	1	1							
R	252	2	9	1	3	16	1	5	8	13	7	5	6	9	3
V	263	5	2	13	6	5	6	3		27	5	2		3	3

RR1	43.4%	33.3%	41.2%	22.9%	57.1%	35.1%	48.6%	60.6%	39.2%	33.3%	34.7%	52.6%	51.3%	46.5%	29.7%
RR2	44.3%	35.9%	41.2%	25.0%	57.1%	37.8%	51.4%	63.6%	39.2%	33.3%	34.7%	52.6%	51.3%	46.5%	29.7%

CODE	O11	P13	PowerRanch	Q15	R11	R13	R15	R18	S11	S15	S19	T14	T15	U15	U16
I	19	14	20	21	20	15	20	20	20	14	20	18	20	19	14
INEL												1			1
NC	9	18	11	13	14	19	15	22	7	14	20	11	9	7	16
O	8	6		3		1	7	3			3	8	13	2	16
P			1			1		1		1	1				
R	13	11	5	12	3	12	5	1	12	19	1	1	3	3	1
V	2	12	3	7	1	8	11	6	2	8	5	3	9	9	7

RR1	38.8%	28.6%	54.1%	42.9%	54.1%	31.3%	42.6%	42.6%	51.3%	29.2%	44.4%	47.4%	44.4%	61.3%	29.8%
RR2	38.8%	28.6%	56.8%	42.9%	54.1%	33.3%	42.6%	44.7%	51.3%	31.3%	46.7%	47.4%	44.4%	61.3%	29.8%

Codes

I	Complete	P	Partial
INEL	Ineligible	R	Refusal
NC	NonContact	V	Vacant
O	Other		

CODE	U18	U21	V11	V14	V16	W15	W9	X16	X17	Y10	Y18	Y6	Z18	Z20	Z21
I	21	20	20	22	12	20	19	21	20	16	20	14	20	20	20
INEL			1		1										
NC	15	10	11	23	11	9	5	10	17	16	25	18	16	1	14
O	1	2	1	2	10	2	8	4	1	2	5	1	5		1
P	1	1				1				1	1	1			1
R	1	2	4	1	6	5	5	11	3	5	2	5	2	2	4
V		6	3	8		4	4	10	7		13	2	6		

RR1	53.8%	57.1%	55.6%	45.8%	30.8%	54.1%	51.4%	45.7%	48.8%	40.0%	37.7%	35.9%	46.5%	87.0%	50.0%
RR2	56.4%	60.0%	55.6%	45.8%	30.8%	56.8%	51.4%	45.7%	48.8%	42.5%	39.6%	38.5%	46.5%	87.0%	52.5%

CODE	Z23
I	16
INEL	
NC	23
O	2
P	
R	4
V	27

RR1	35.6%
RR2	35.6%

Codes

I	Complete	P	Partial
INEL	Ineligible	R	Refusal
NC	NonContact	V	Vacant
O	Other		

