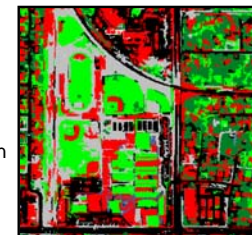
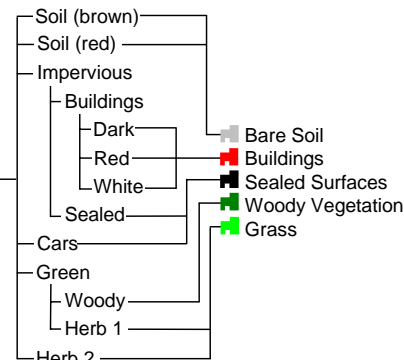
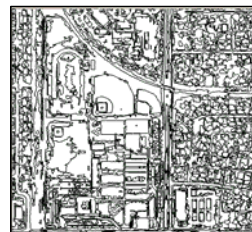
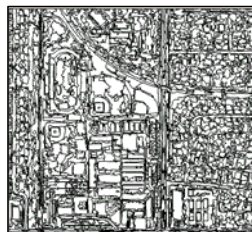


A high-resolution urban landcover classification scheme for Phoenix

Jason Walker & Thomas Blaschke



1 km



| Accuracy Statistics | | |
|-------------------------|---------------------|-----------------|
| | Producer's Accuracy | User's Accuracy |
| Soil | 0.76 | 0.79 |
| Grass | 0.76 | 0.72 |
| Woody | 0.88 | 0.89 |
| Buildings | 0.85 | 0.87 |
| Sealed Surfaces | 0.88 | 0.84 |
| Overall Accuracy = 0.84 | | |
| Overall Kappa = 0.80 | | |

Raw Imagery → Initial Segmentation → Re-segmentation → Classification → Re-classification → Output