

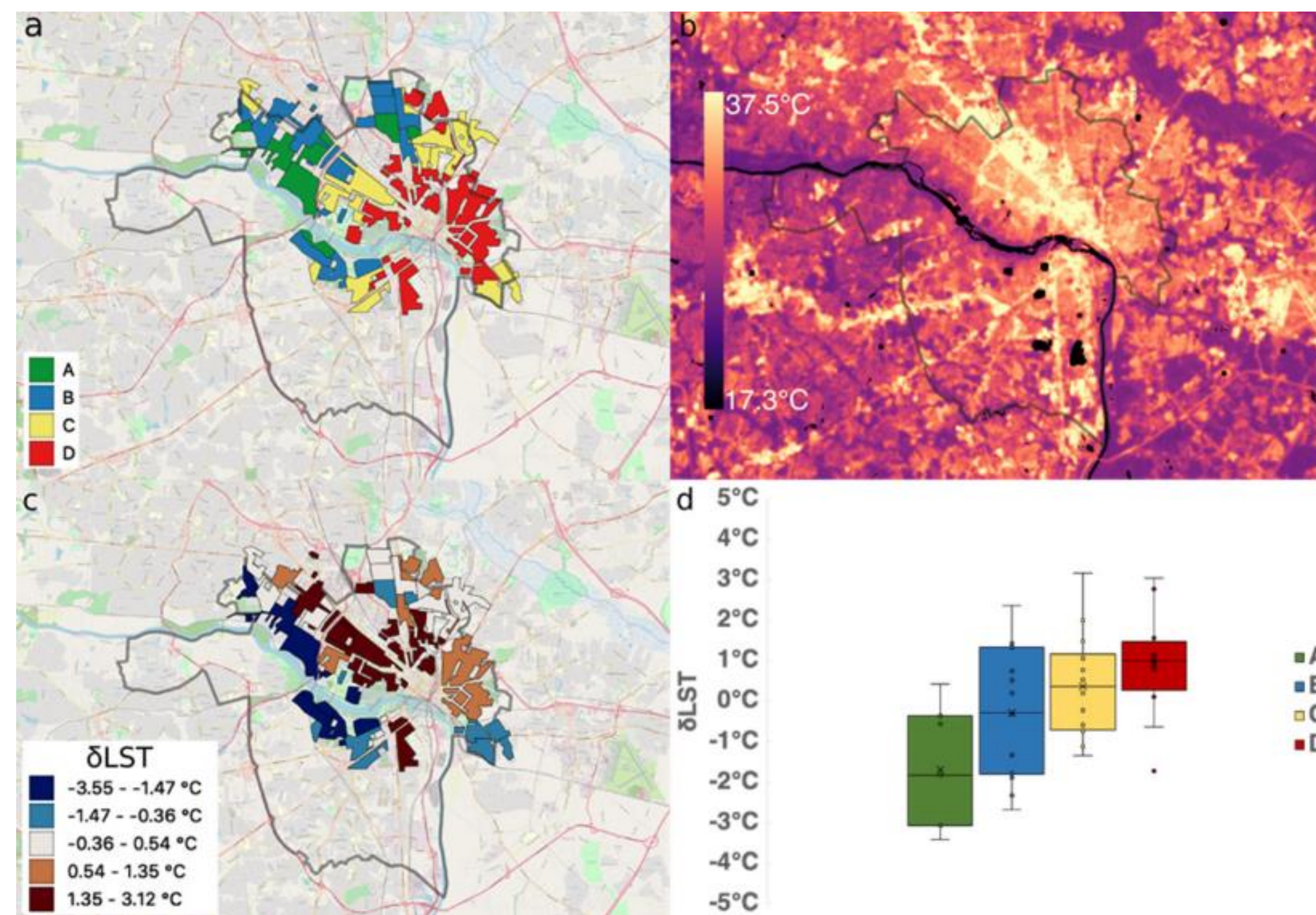
The Climate Consequences of Privatizing Public Spaces

Zachary Van Tol¹, Jennifer Vanos¹, Ariane Middel², and Kristin Ferguson³

¹School of Sustainability, Arizona State University; ²School of Arts, Media and Engineering, Arizona State University; and ³School of Social Work, Arizona State University

Historical Context

- Although a relatively new scientific revelation, inequitable climate exposures by design have plagued many cities, including Phoenix, since their conception (Bolin, 2005).



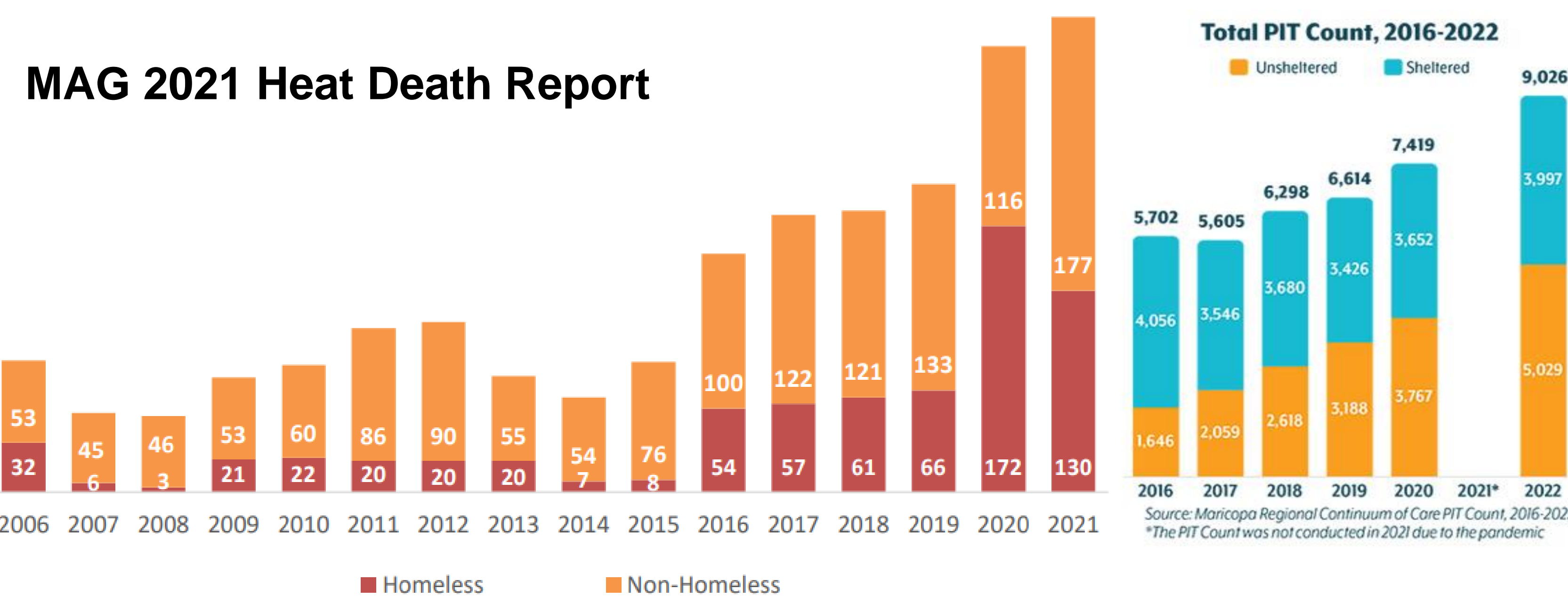
- Most prominently, disbursement of heat and pollution were found to disproportionately impact lower income and minority communities (Hoffman et al., 2020).

Research Gaps

- Broad focus on housed communities, ignoring those most exposed to the climate consequences of city design.
- Tendency towards historical analysis, neglecting the opportunity for critiques of modern policy making outcomes.

Dereliction of Duty

- Nearly 3,100 individuals identified as unsheltered within the city of Phoenix during the 2022 Housing and Urban Development-mandated Point-in-Time count (MAG, 2022).
- The city severely lacks the number of beds required to accommodate those in need of temporary shelter, last counted at roughly 1,800 in 2021 (City of Phoenix, 2021).



- In conjunction with the rise in unsheltered homelessness, heat deaths remain at unacceptable, and increasing, levels (MAG, 2021).

Contemporary Setting

- Tempe's "Accelerated Encampment Response Program" has removed people from the Rio Salado riverbed (City of Tempe, 2022).



TEMPE
'We have nowhere to go': Tempe cracks down on homeless camps in Rio Salado riverbed
Sam Kmack
Arizona Republic

- Jurisdictions have hired private security at the request of housed residents, further limiting alternative spaces for unsheltered people to seek respite (Wong, K., 2022).

Questions of Interest

- How does the regulation of public spaces alter climate exposures among people who are experiencing unsheltered homelessness?
- What are the health implications of climate exposures in the different areas policy permits people who are facing unsheltered homelessness to reside?

Citations:
Bolin, Bob, Sara Grineski, and Timothy Collins. "The Geography of Despair: Environmental Racism and the Making of South Phoenix, Arizona, USA." *Human ecology review* 12, no. 2 (2005): 156-168. Link: https://www.jstor.org/eeproxy1.lib.asu.edu/stable/24707530?seq=1#metadata_info_tab_contents
City of Phoenix. (2021, February 3). *City Adds Shelter Beds, Invests in Solutions for Homelessness*. <https://www.phoenix.gov/newsroom/human-services/1742>
City of Tempe. (n.d.). *Accelerated Homeless Response*. <https://www.tempe.gov/government/human-services/housing-services/ending-homelessness/encampment-response/fsiteid-1>
Hoffman, J. S., Shandas, V., & Pendleton, N. (2020). The Effects of Historical Housing Policies on Resident Exposure to Intra-Urban Heat: A Study of 108 US Urban Areas. *Climate*, 8(1), Article 1. <https://doi.org/10.3390/cli8010012>
Kmack, S. (2022, September 7). "We have nowhere to go": Tempe cracks down on homeless camps in Rio Salado riverbed. *Azcentral*. <https://www.azcentral.com/story/news/local/tempe/2022/09/07/tempe-homeless-encampment-rio-salado-riverbed/7950573001/>
Maricopa Association of Governments. (2021). *Heat-Associated Deaths in Maricopa County, AZ Final Report for 2021*. <https://www.maricopa.gov/DocumentCenter/View/74257/Final-2021-Heat-Deaths>
Maricopa Association of Governments. (2022). *2022 Point in Time (PIT) Count Report*. <https://azmag.gov/Portals/0/Documents/MagContent/2022-PIT-Count-Report-Final.pdf?ver=mHByGa3hNtmeOOFMzxtA%3d%3d>
Wong, K. (2022, November 2). Phoenix City Council approves plan to place private security at parks. *FOX10*. <https://www.fox10phoenix.com/news/phoenix-city-council-approves-plan-to-place-private-security-at-parks>

Theoretical Framework

