

<sup>1</sup>David A. Sampson, <sup>1</sup>Ray Quay, <sup>1</sup>Dave D. White, and <sup>2</sup>Pat Gober

<sup>1</sup> Decision Center for a Desert City, Arizona State University (ASU), Tempe, AZ 85287-5302 USA

<sup>2</sup>School of Geographical Sciences and Urban Planning, ASU, Tempe, AZ 85287-5302 USA

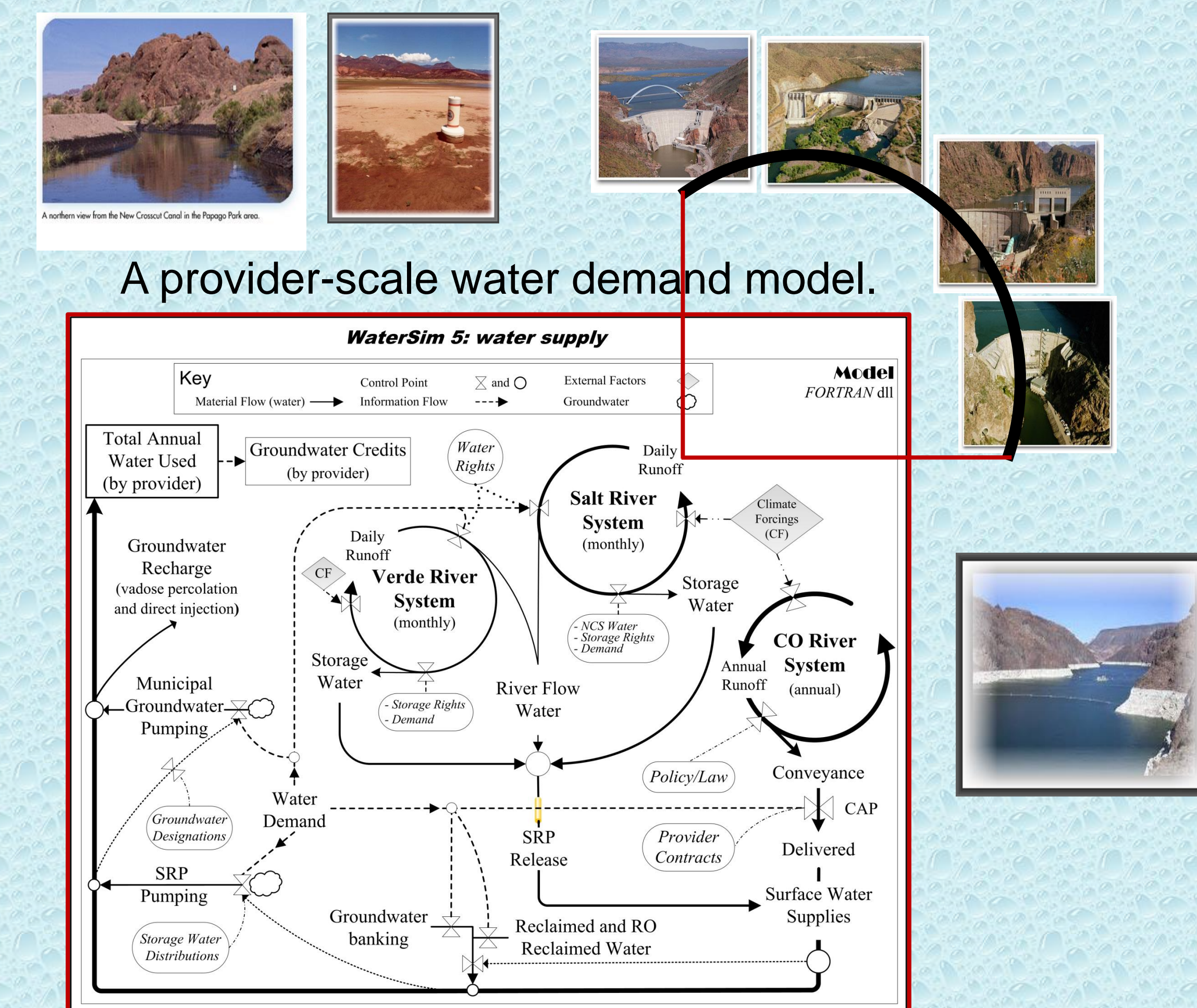
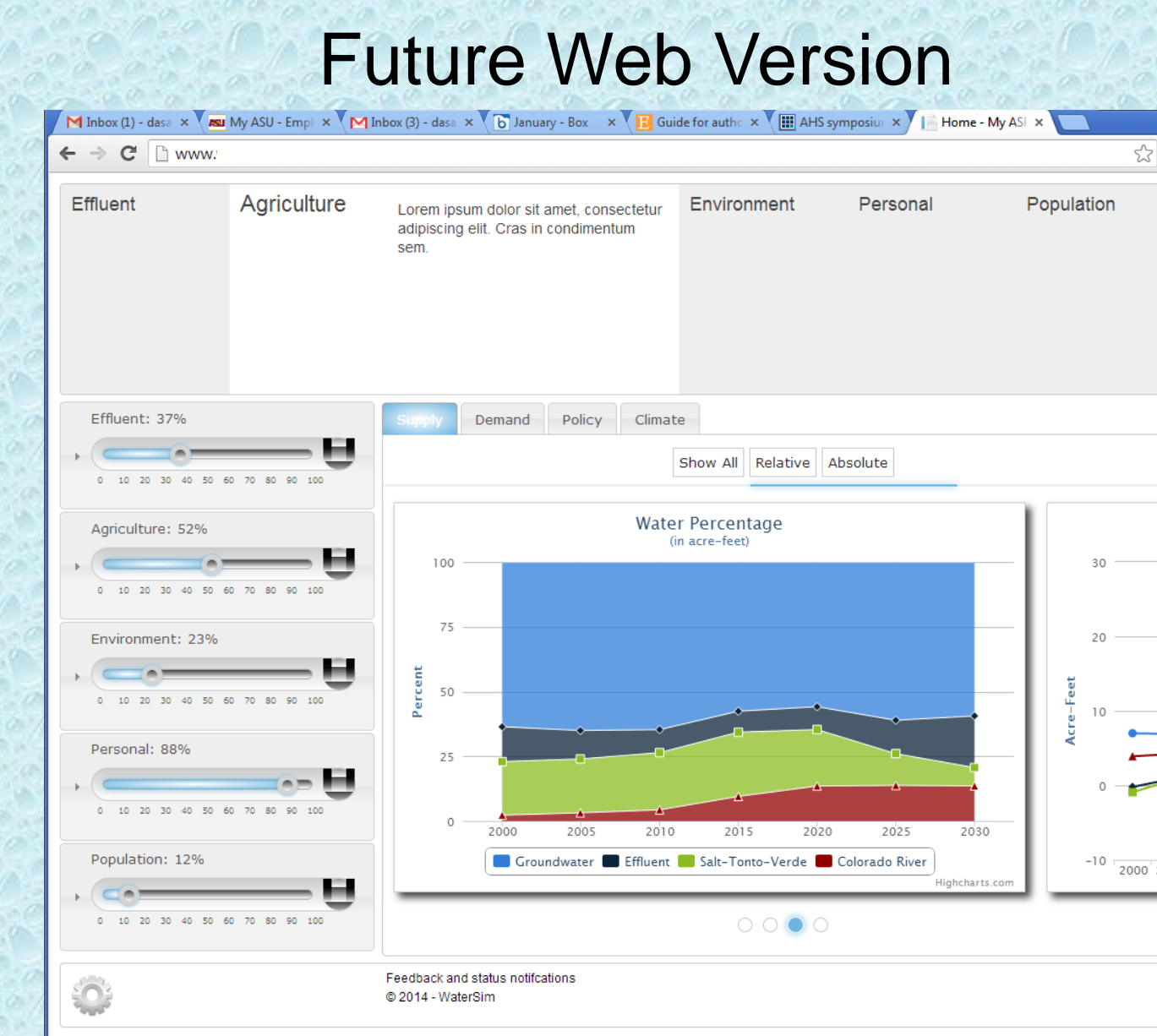
CAP ANNUAL SYMPOSIUM 17 JAN, 2014 Central Arizona-Phoenix Long-Term Ecological Research CAP LTER

SCOTTSDALE, AZ

## Background

- The Decision Center for a Desert City (DCDC) has developed a water policy and management model termed WaterSim. We refer to it as DCDC\_WaterSim
- 2005-2008: Dr. Tim Lant began what can be called version 1
- 2008: Mike Tschudi and David Sampson began work on the model- a county-scale systems dynamics model written in an object-oriented program termed Powersim® (ver. 2)
  - ❑ Four policy options: 1) no overdraft, 2) satisfy demand, 3) 5-year sustainability, 4) fixed GPCD.
  - ❑ Water demand was modulated by: 1) population growth rate, 2) water from Agriculture, and 3) housing density
  - ❑ Climate factors and drought factors reduced surface water supplies
- 2009: A C# interface enabled the model to be visualized in the Decision Theater (ver. 3)
- 2010: The model was converted to FORTRAN to permit interruption in the simulation cycle (ver. 3.5)
- 2011: The provider-scale water supply model (ver. 4)
- 2012-2013: The provider-scale water demand model (ver. 5)
- 2014: Web interface to version 5.0

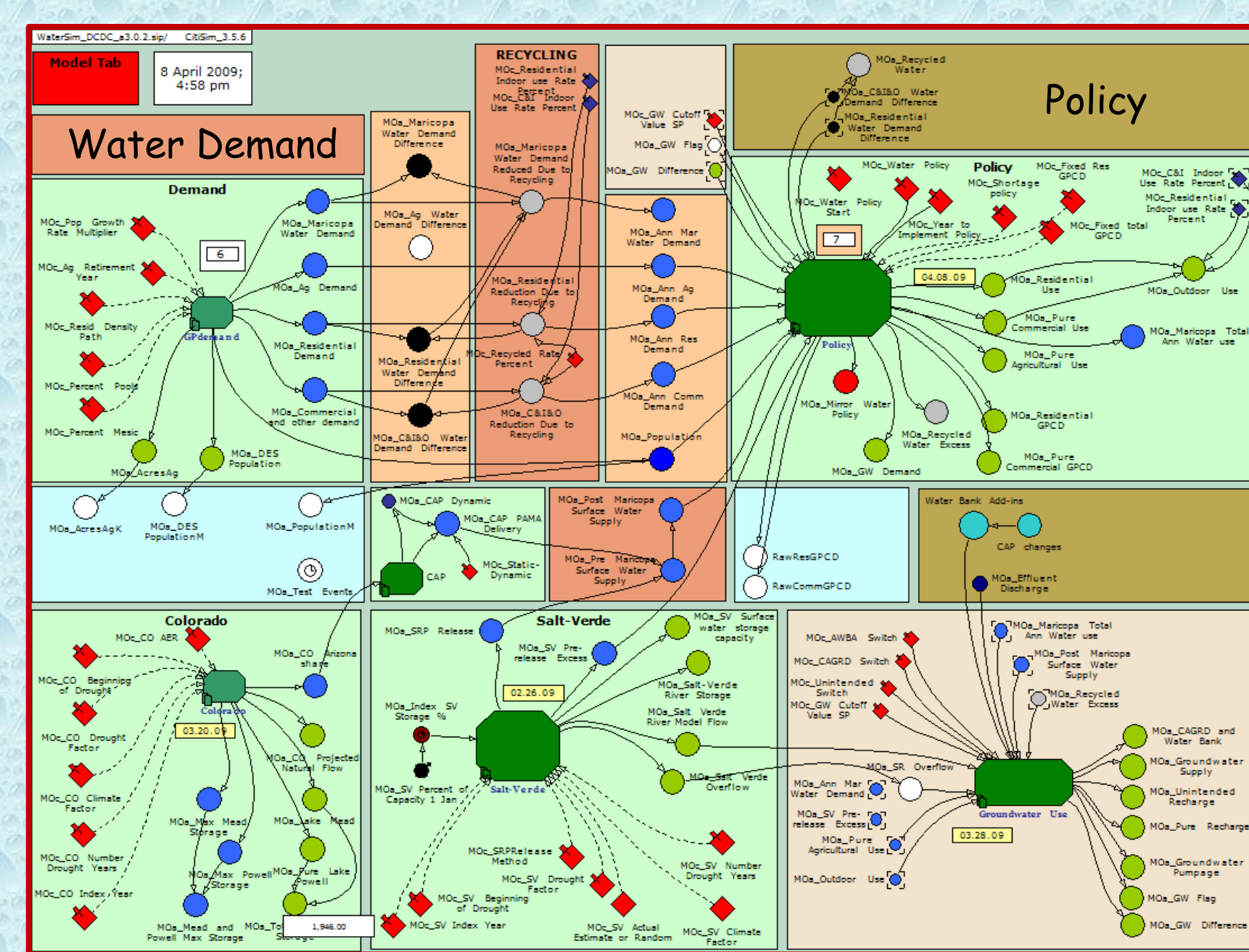
**Highlights**  
Our water policy and management model, WaterSim version 5, has a new look! We are developing a web interface to the model!



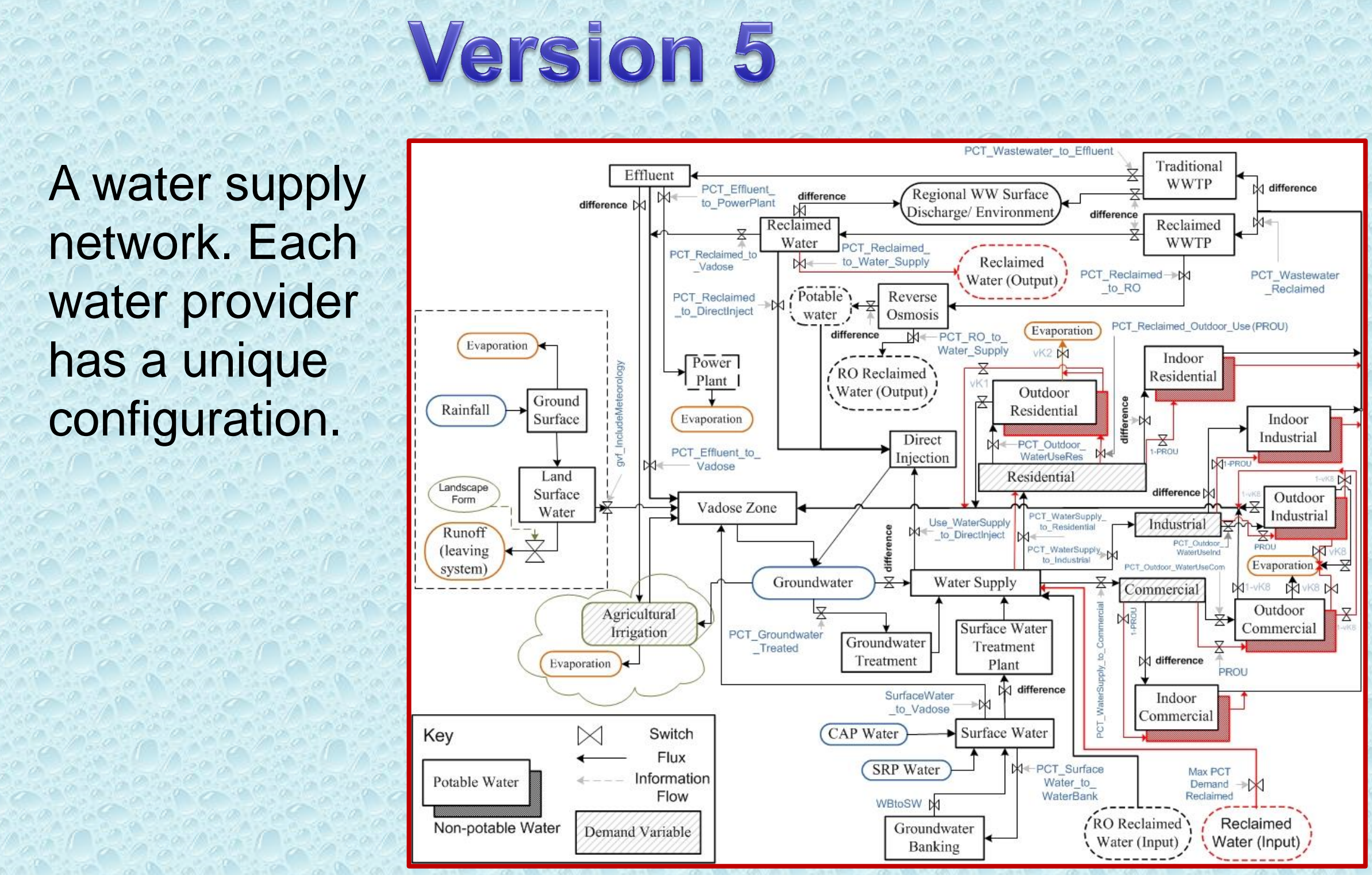
Gober, P., E.A. Wentz, T. Lant, M.K. Tschudi, and C.W. Kirkwood. 2011. WaterSim: A simulation model for urban water planning in Phoenix, Arizona, USA. *Environment and Planning B* 38(2):197-215. DOI: 10.1068/b36075.

Gober, P., and C.W. Kirkwood. 2010. Vulnerability assessment of climate-induced water shortage in Phoenix. *Proceedings of the National Academy of Sciences USA* 107(50):21295-21299.

White, D. D., A. Y. Wutich, K. L. Larson, P. Gober, T. Lant, and C. Senneville. 2010. Credibility, salience, and legitimacy of boundary objects: water managers' assessment of a simulation model in an immersive decision theater. *Science & Public Policy* 37(3):219-232.

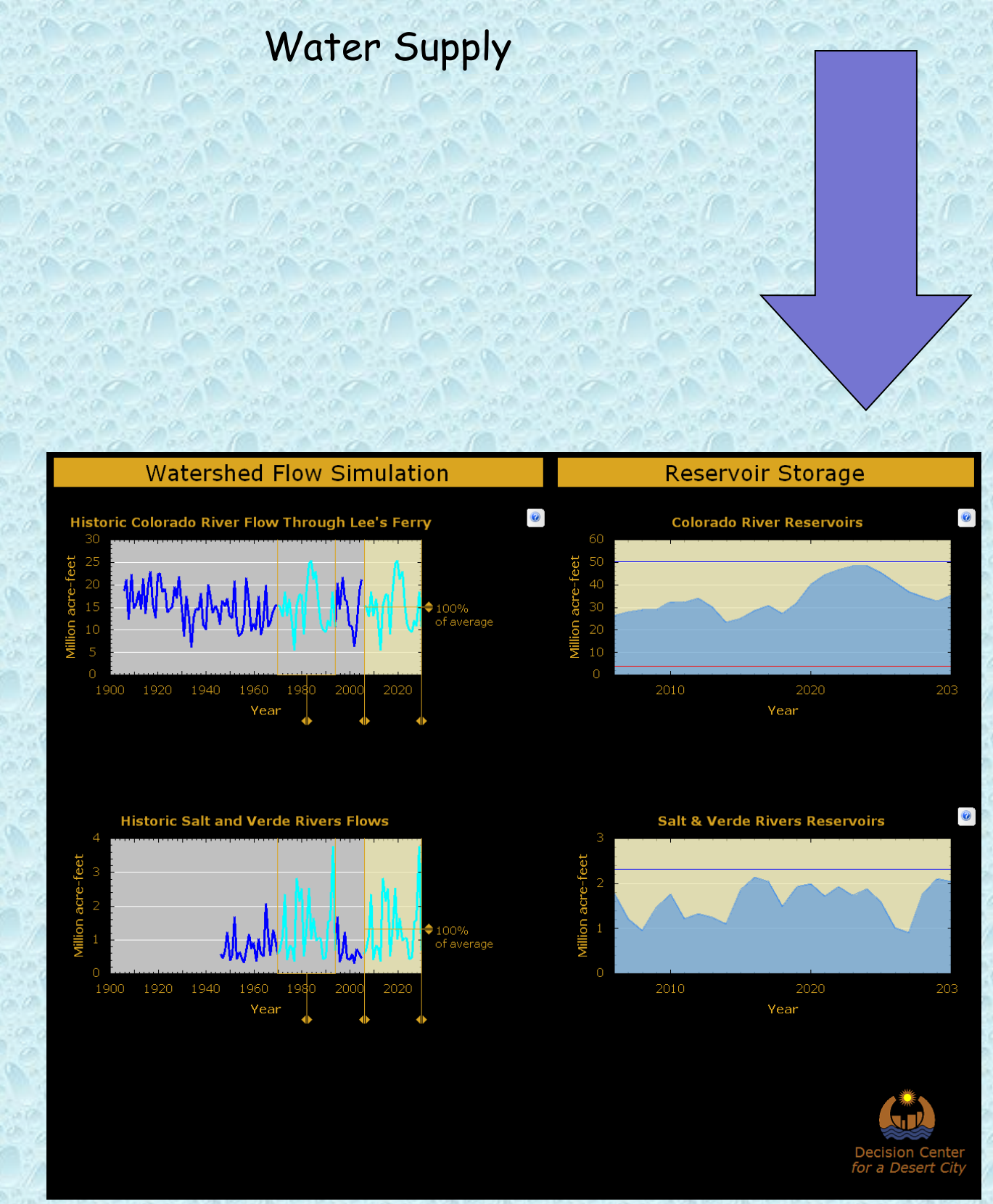
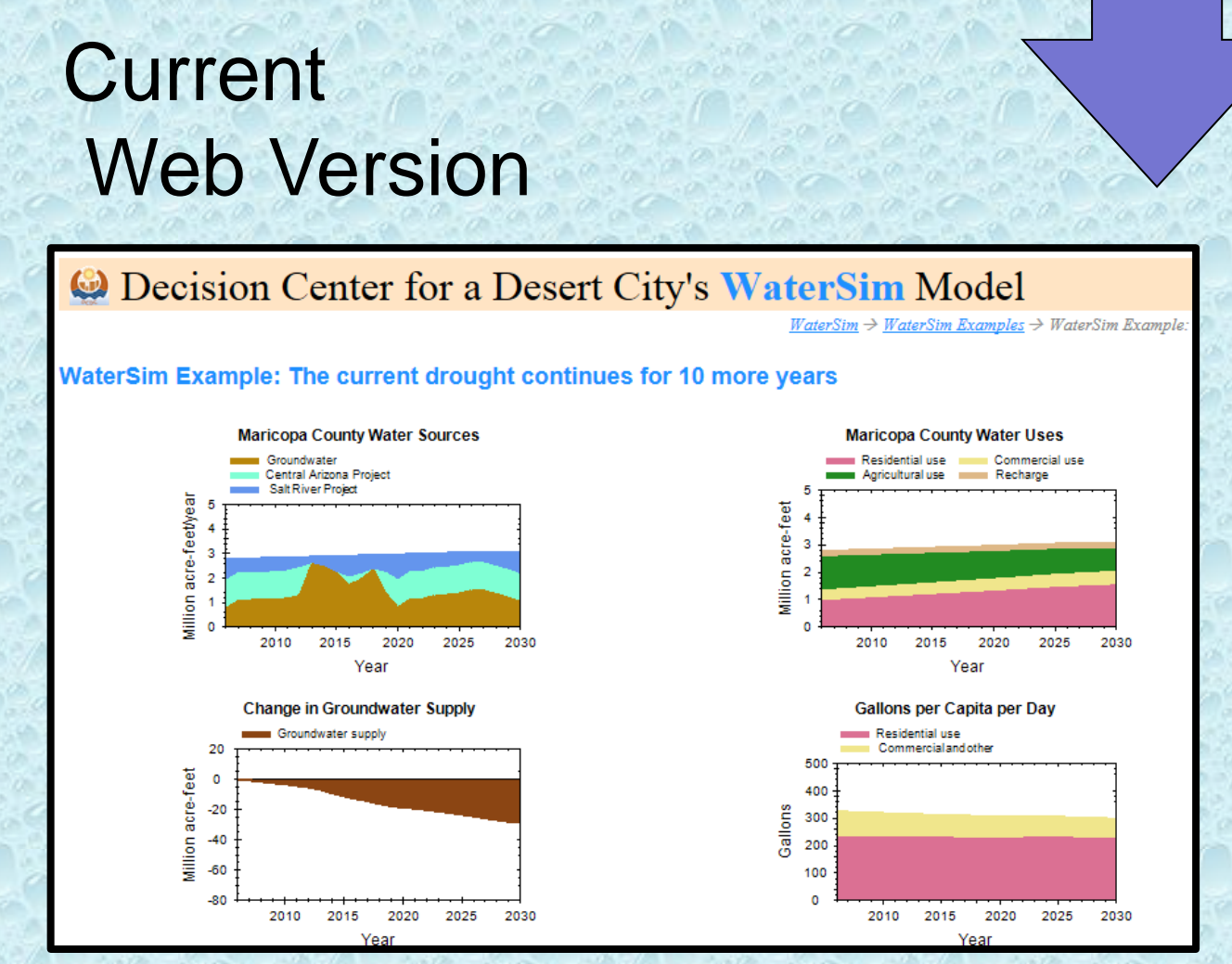


**Version 3**  
"Enhanced" county-scale model.



**Version 5**

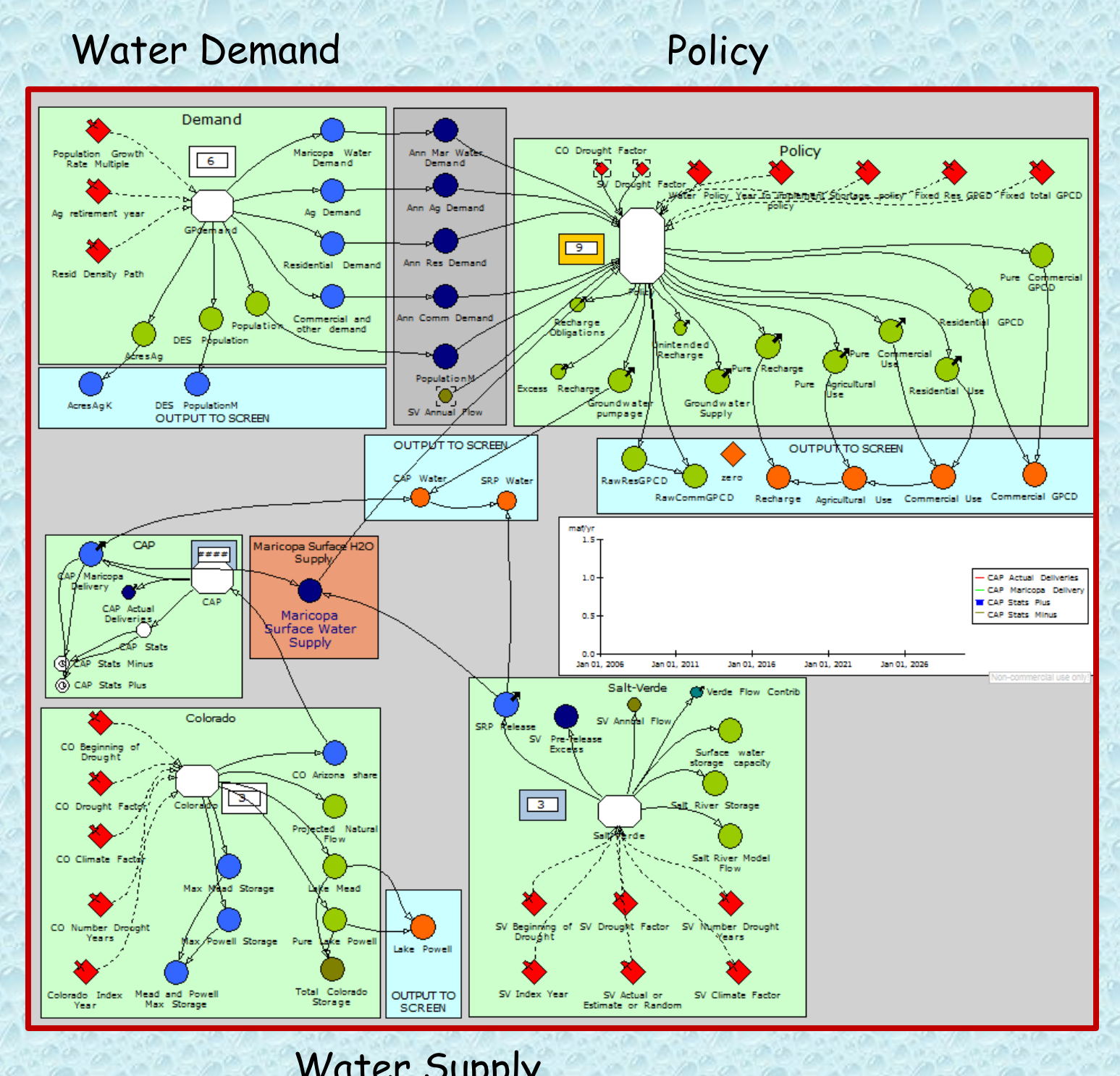
A water supply network. Each water provider has a unique configuration.



Current Decision Theater version (sample graphic)

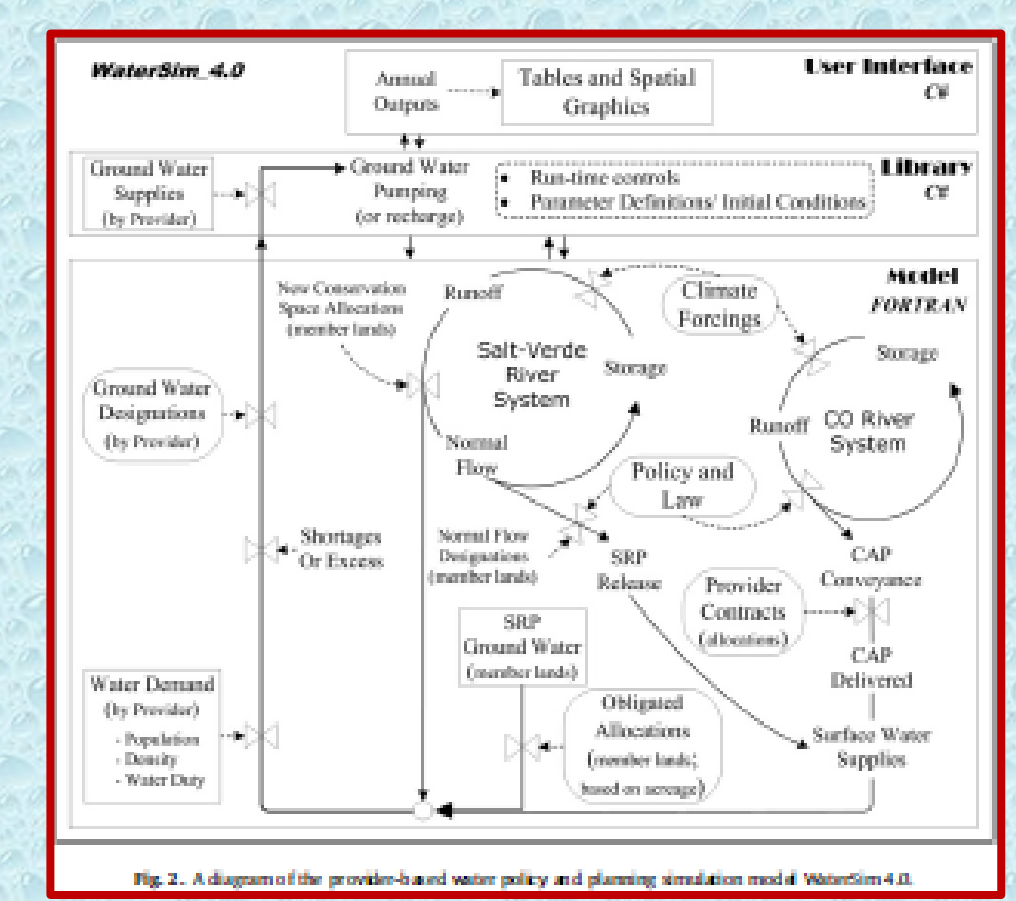
**Version 2**

A county-scale model; the Powersim® objects and their relationships.



**Version 4**

A provider-scale water supply model.



Sampson, D.A., V. Escobar, M.K. Tschudi, T. Lant and P. Gober. 2011. A provider-based water planning and management model—WaterSim 4.0—for the Phoenix Metropolitan Area. *Journal of Environmental Management* 92: 2596-2610.

Murray, A.T., P.D. Padegimas, P. Gober, L. Anselin, R.J. Sergio, D.A. Sampson. 2012. Spatial optimization models for water supply allocation. *Water Resources Management* 26(8): 2243-2257. DOI: 10.1007/s11269-012-0013-5.

**We could use your Help!**

- We need:
- Graphic design ideas
  - Beta testers/ classroom evaluation
  - Relevant storylines for different audiences
  - Ideas on different advanced methods to display temporal and spatial data

## Acknowledgment

This material is based upon work supported by the National science Foundation under Grant No. SES-0951366 Decision Center for a Desert City II: Urban Climate Adaptation (DCDC). Any opinions, findings and conclusions or recommendation expressed in this material are those of the author(s) and do not necessarily reflect the views of the National Science Foundation (NSF).

