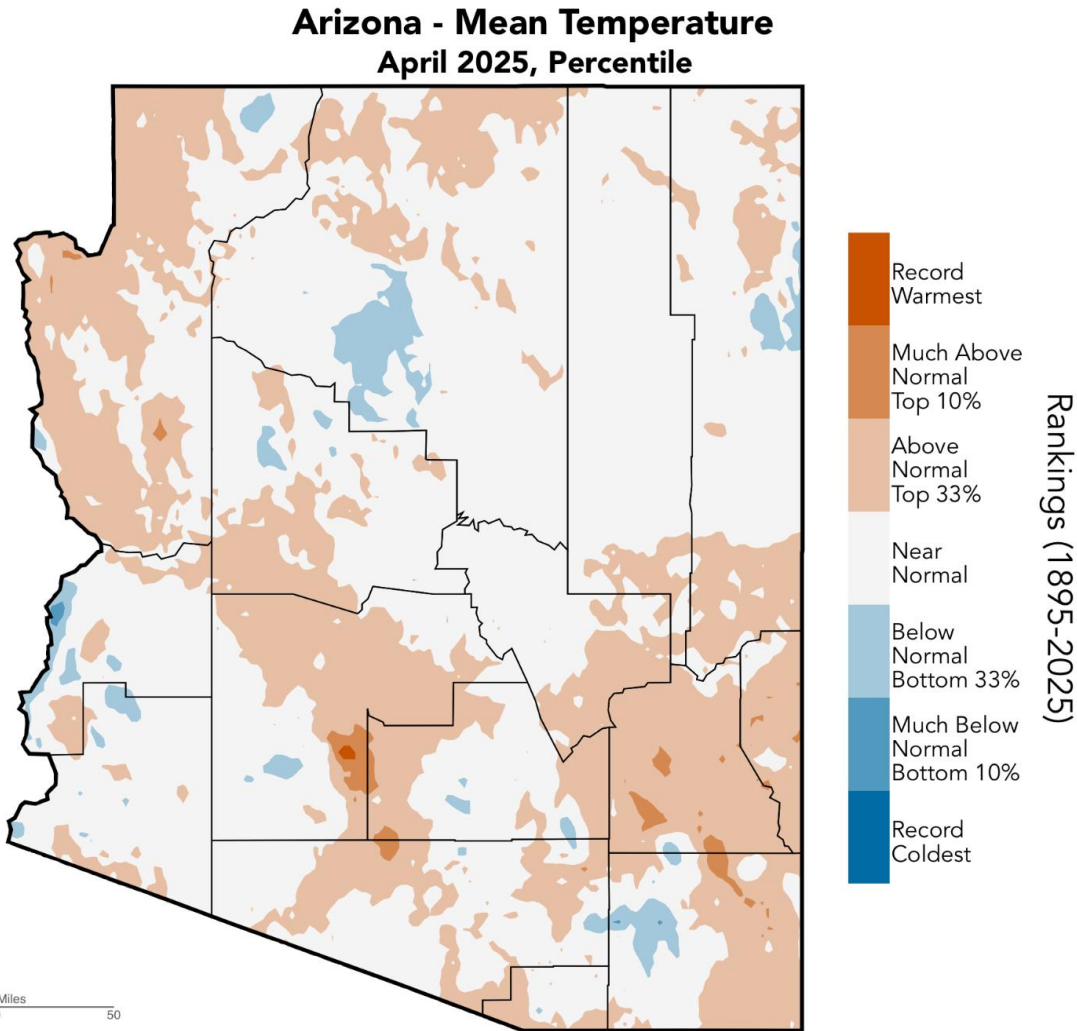


# April 2025: warmer

Temp: 58.6°F Rank: 38<sup>th</sup> hottest (tie) Anomaly: 1.4°F



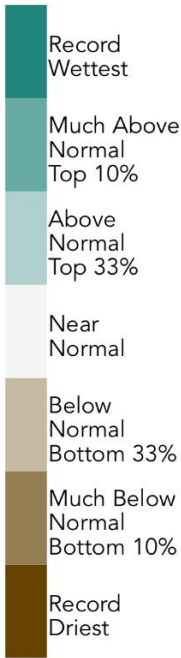
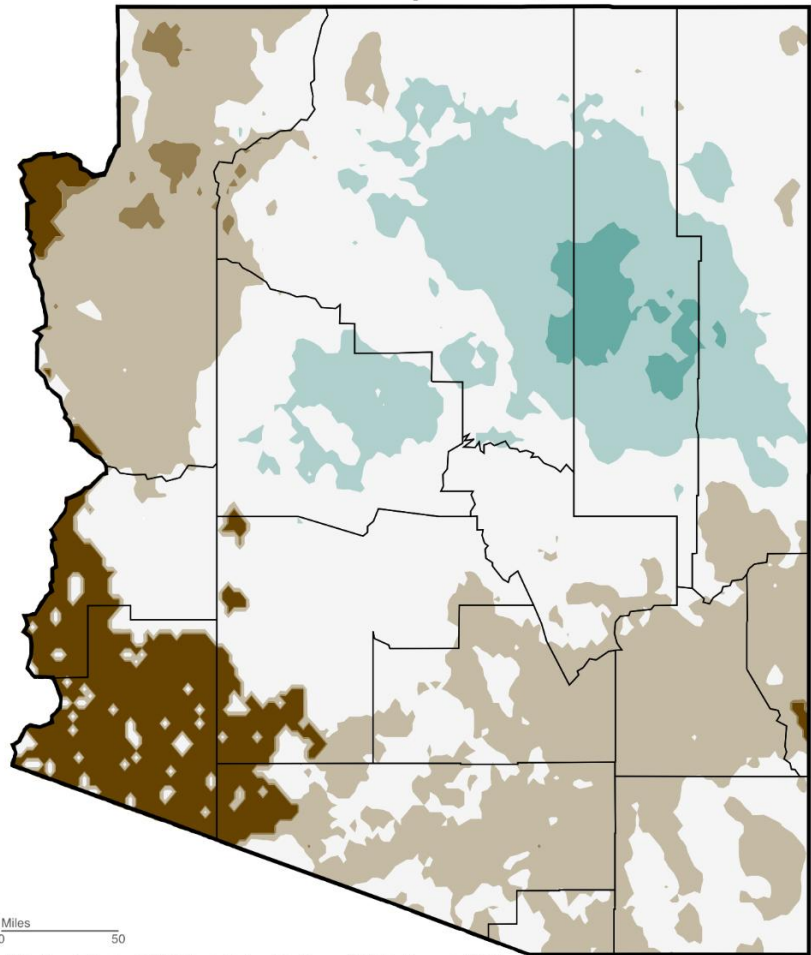
WestWide Drought Tracker, WRCC, Climate Engine, Data Source: PRISM Prelim, created 05 May 2025

Monthly County Average Temperature April 2025			
Preliminary data from NOAA/NCEI as of 5/10/25			
Arizona Counties	Temp	Depart	Rank
Apache	48.3°	0.5°	57 <sup>th</sup> hottest (tie)
Cochise	60.6°	1.8°	27 <sup>th</sup> hottest
Coconino	51.1°	1.2°	44 <sup>th</sup> hottest (tie)
Gila	57.3°	1.4°	45 <sup>th</sup> hottest
Graham	59.9°	1.8°	37 <sup>th</sup> hottest (tie)
Greenlee	54.8°	1.1°	43 <sup>rd</sup> hottest (tie)
La Paz	69.8°	1.5°	42 <sup>nd</sup> hottest (tie)
Maricopa	68.6°	1.8°	40 <sup>th</sup> hottest (tie)
Mohave	60.5°	1.8°	36 <sup>th</sup> hottest
Navajo	50.4°	0.9°	47 <sup>th</sup> hottest (tie)
Pima	66.2°	2.0°	31 <sup>st</sup> hottest (tie)
Pinal	67.6°	2.2°	29 <sup>th</sup> hottest (tie)
Santa Cruz	59.3°	1.6°	34 <sup>th</sup> hottest
Yavapai	56.4°	1.0°	49 <sup>th</sup> hottest (tie)
Yuma	70.0°	1.2°	47 <sup>th</sup> hottest (tie)
Record coldest	Top 10% coldest	Top 33% coldest	Normal
	Top 33% hottest	Top 10% hottest	Record hottest

# April 2025: near average

Total: 0.37" Rank: 61<sup>st</sup> driest (tie) Anomaly: -0.16"

Arizona - Precipitation  
April 2025, Percentile



Rankings (1895-2025)

## Monthly County Precipitation

April 2025

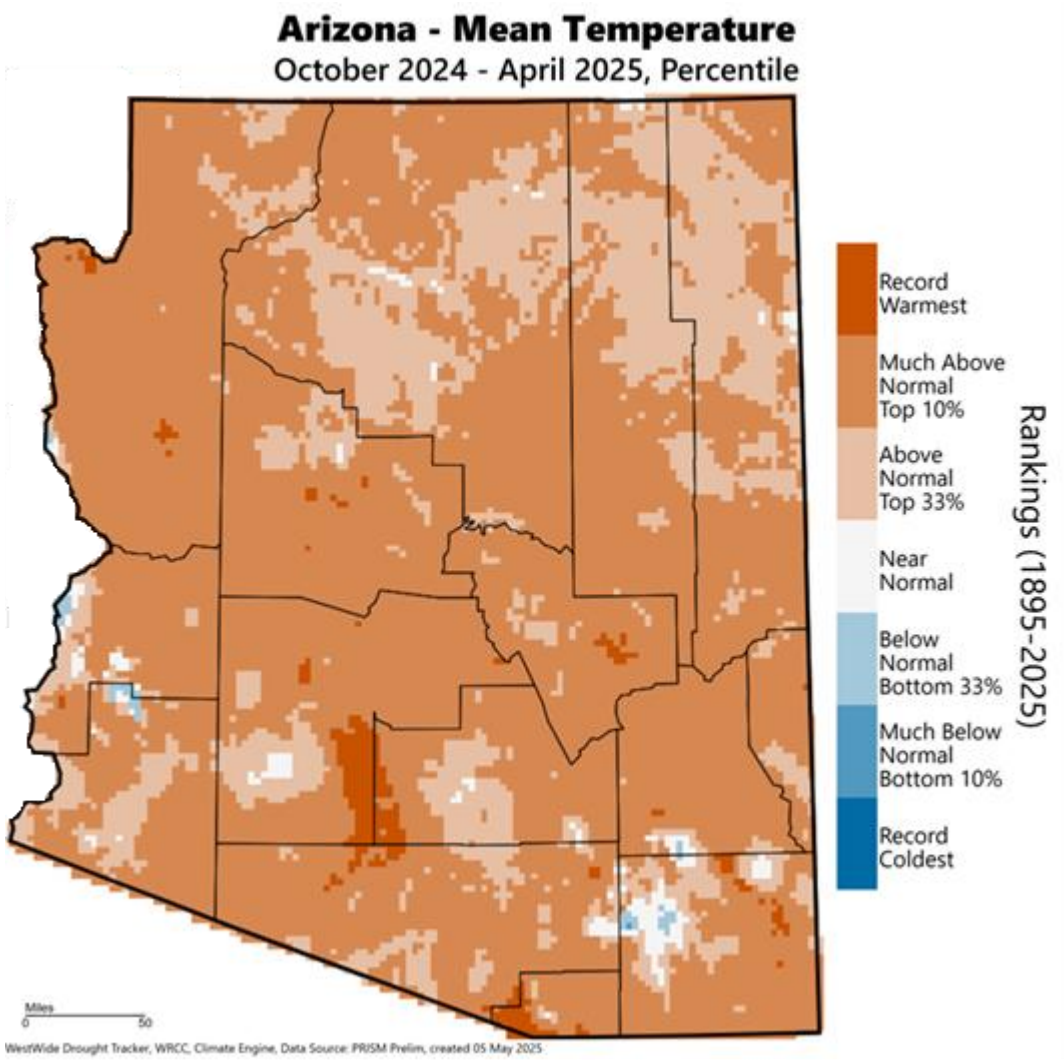
*Preliminary data from NOAA/NCEI as of 5/10/25*

Arizona Counties	Total	Depart	Rank
Apache	0.63"	-0.05"	60 <sup>th</sup> wettest
Cochise	0.08"	-0.21"	45 <sup>th</sup> driest (tie)
Coconino	0.67"	-0.09"	58 <sup>th</sup> wettest
Gila	0.50"	-0.32"	60 <sup>th</sup> driest
Graham	0.12"	-0.31"	33 <sup>rd</sup> driest (tie)
Greenlee	0.16"	-0.37"	35 <sup>th</sup> driest (tie)
La Paz	0.05"	-0.15"	55 <sup>th</sup> driest (tie)
Maricopa	0.17"	-0.13"	62 <sup>nd</sup> wettest (tie)
Mohave	0.19"	-0.36"	40 <sup>th</sup> driest (tie)
Navajo	0.84"	0.23"	30 <sup>th</sup> wettest
Pima	0.04"	-0.27"	37 <sup>th</sup> driest
Pinal	0.09"	-0.32"	39 <sup>th</sup> driest (tie)
Santa Cruz	0.04"	-0.36"	33 <sup>rd</sup> driest (tie)
Yavapai	0.67"	-0.08"	52 <sup>nd</sup> wettest (tie)
Yuma	0.00"	-0.13"	1 <sup>st</sup> driest (tie)

Record driest	Top 10% driest	Top 33% driest	Normal	Top 33% wettest	Top 10% wettest	Record wettest
---------------	----------------	----------------	--------	-----------------	-----------------	----------------

# Oct 2024 to Apr 2025: very warm

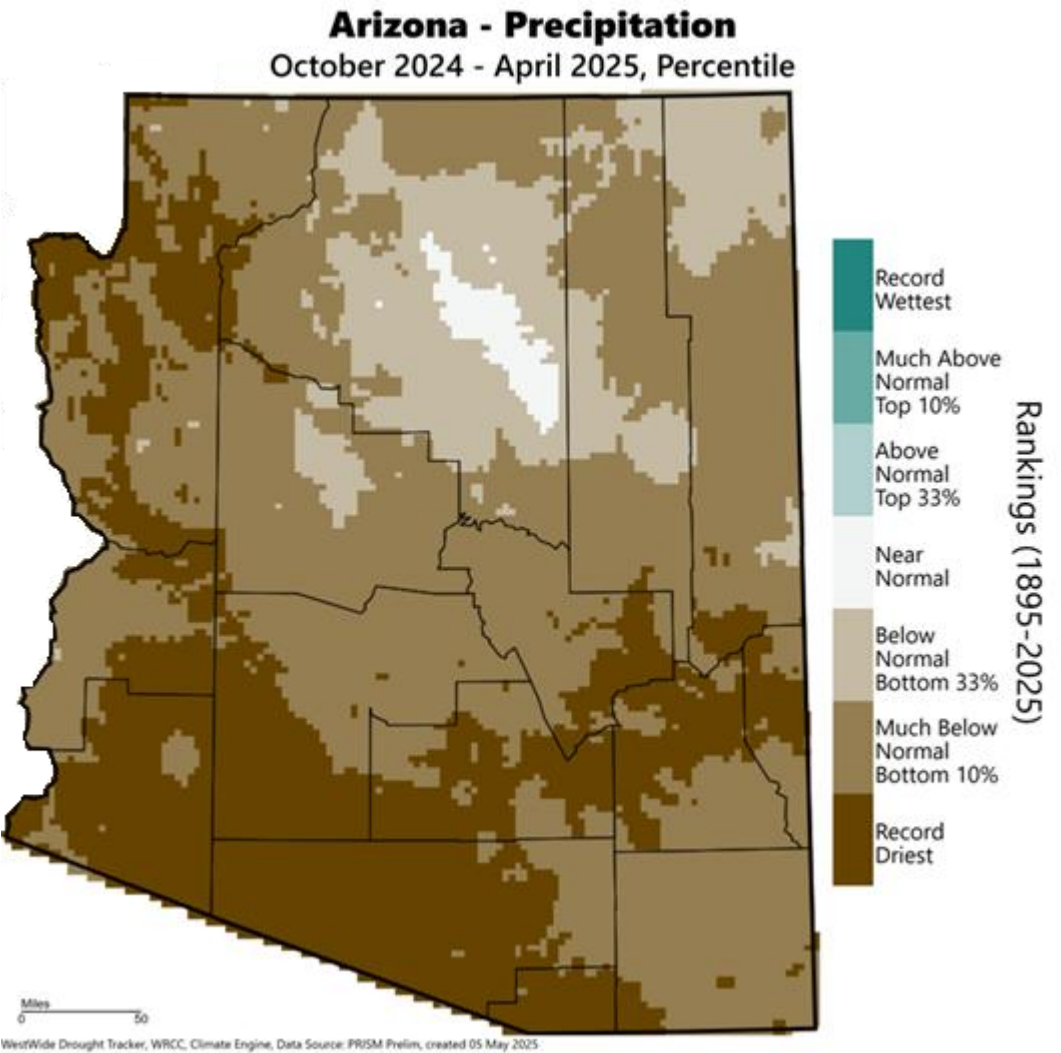
Temp: 52.3°F Rank: 7<sup>th</sup> warmest Anomaly: 3.3°F



Monthly County Average Temperature October 2024-April 2025						
Preliminary data from NOAA/NCEI						
Arizona Counties		Temp	Depart	Rank		
Apache		41.2°	2.2°	12 <sup>th</sup> hottest (tie)		
Cochise		54.3°	3.3°	4 <sup>th</sup> hottest		
Coconino		44.3°	3.3°	7 <sup>th</sup> hottest		
Gila		52.1°	3.5°	6 <sup>th</sup> hottest		
Graham		53.7°	3.3°	3 <sup>rd</sup> hottest (tie)		
Greenlee		49.1°	3.0°	6 <sup>th</sup> hottest		
La Paz		63.1°	3.4°	7 <sup>th</sup> hottest		
Maricopa		62.4°	3.5°	7 <sup>th</sup> hottest		
Mohave		54.2°	3.5°	6 <sup>th</sup> hottest		
Navajo		43.3°	3.2°	7 <sup>th</sup> hottest		
Pima		60.5°	3.5°	5 <sup>th</sup> hottest (tie)		
Pinal		60.3°	3.1°	6 <sup>th</sup> hottest (tie)		
Santa Cruz		54.3°	3.1°	5 <sup>th</sup> hottest (tie)		
Yavapai		51.8°	3.4°	7 <sup>th</sup> hottest		
Yuma		64.1°	3.2°	7 <sup>th</sup> hottest (tie)		
Record coldest	Top 10% coldest	Top 33% coldest	Normal	Top 33% warmest	Top 10% warmest	Record warmest

# Oct 2024 to Apr 2025: very dry

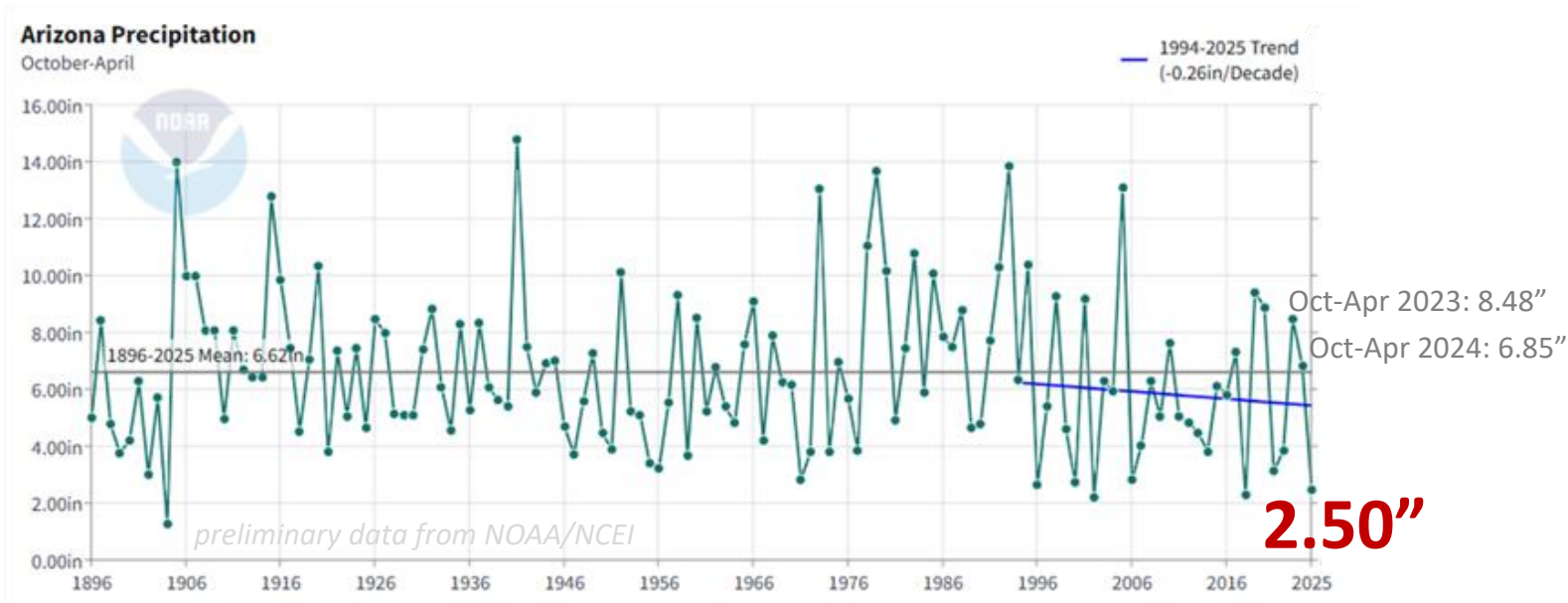
Total: 2.50" Rank: 4<sup>th</sup> driest Anomaly: -4.12"



Monthly County Precipitation						
October 2024-April 2025						
Preliminary data from NOAA/NCEI						
Arizona Counties		Total	Depart	Rank		
Apache		3.29"	-3.67"	6 <sup>th</sup> driest		
Cochise		1.19"	-4.70"	3 <sup>rd</sup> driest		
Coconino		3.83"	-3.88"	10 <sup>th</sup> driest (tie)		
Gila		4.56"	-7.86"	7 <sup>th</sup> driest		
Graham		2.30"	-5.37"	4 <sup>th</sup> driest		
Greenlee		2.05"	-6.20"	3 <sup>rd</sup> driest		
La Paz		0.80"	-2.82"	8 <sup>th</sup> driest		
Maricopa		1.49"	-4.17"	5 <sup>th</sup> driest		
Mohave		2.00"	-4.48"	3 <sup>rd</sup> driest		
Navajo		3.35"	-3.17"	11 <sup>th</sup> driest		
Pima		1.07"	-4.80"	2 <sup>nd</sup> driest		
Pinal		1.86"	-5.23"	2 <sup>nd</sup> driest		
Santa Cruz		1.23"	-6.09"	Driest		
Yavapai		3.83"	-5.71"	8 <sup>th</sup> driest		
Yuma		0.39"	-2.60"	5 <sup>th</sup> driest		
Record driest	Top 10% driest	Top 33% driest	Normal	Top 33% wettest	Top 10% wettest	Record wettest

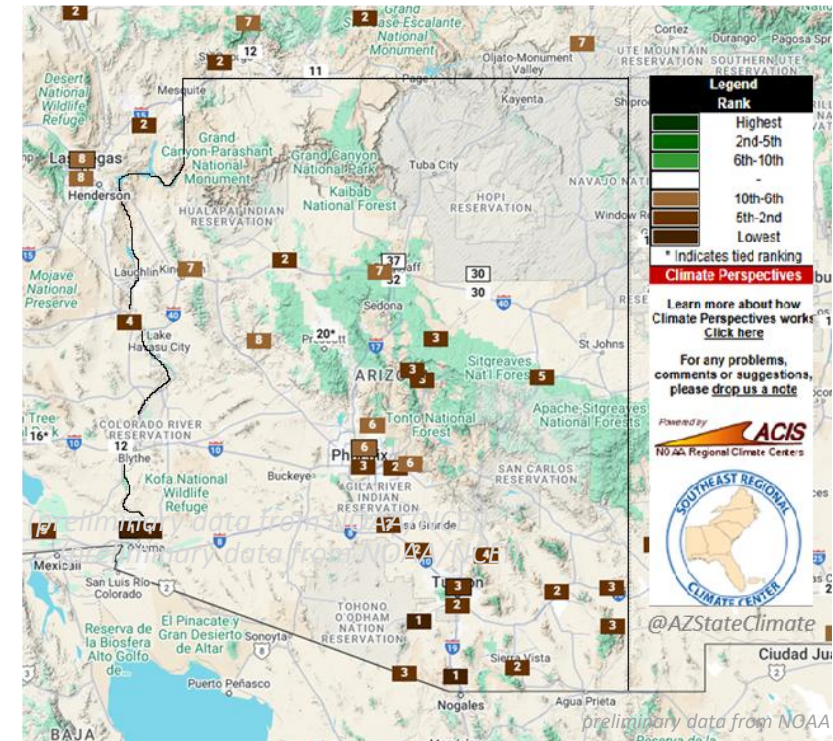
# WY2025 to date: 38% of long-term precipitation

WY2025 Oct-Apr Total: 2.50"    Anomaly: -4.12"    4<sup>th</sup> driest Oct-Apr  
Long-term statewide average precipitation Oct-Apr (1896-2025): 6.62



Long-term average Oct-Apr: 6.62"  
1994-2025 average Oct-Apr: 5.85"

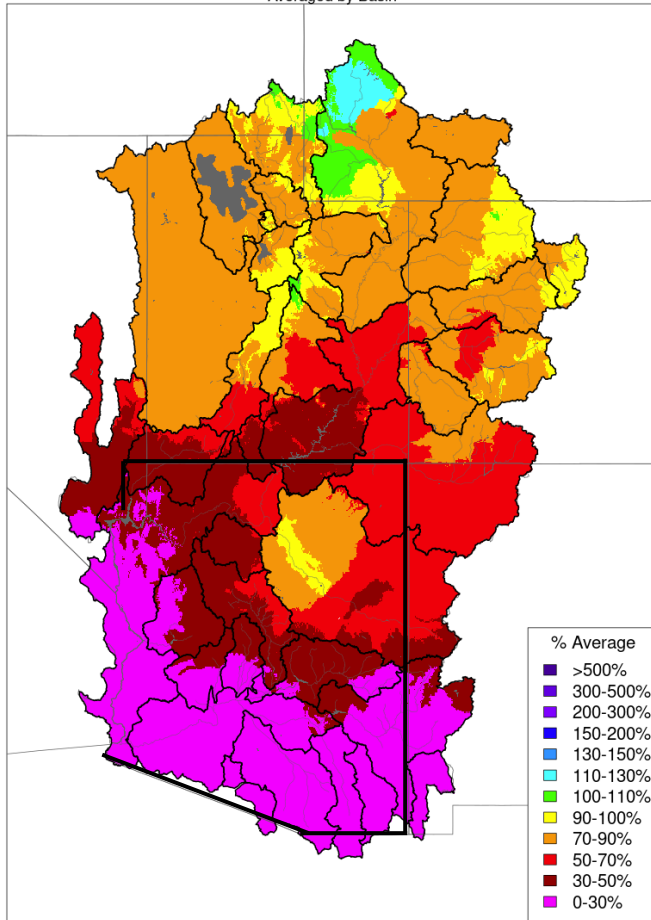
## Total Precipitation Ranking (preliminary) October 1, 2024 to April 30, 2025



# WY2025: SWE largely below median

Water Year Precipitation, October 2024 - April 2025

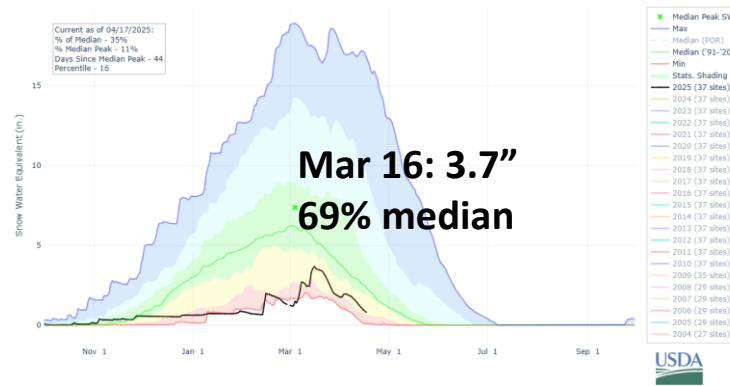
Averaged by Basin



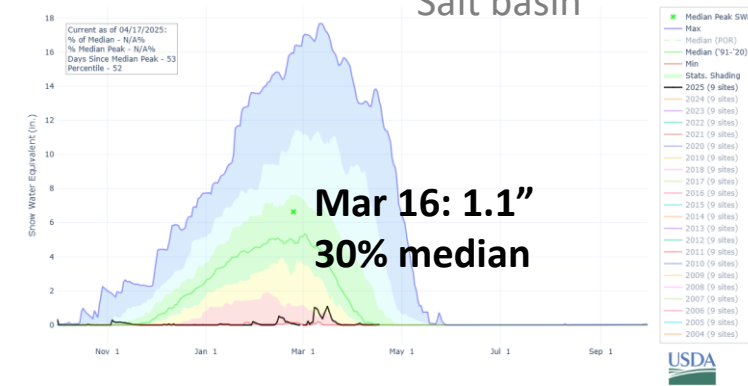
Prepared by NOAA, Colorado Basin River Forecast Center  
Salt Lake City, Utah, [www.cbrfc.noaa.gov](http://www.cbrfc.noaa.gov)

## Lower Colorado River basin (AZ)

SNOW WATER EQUIVALENT IN LOWER COLORADO REGION

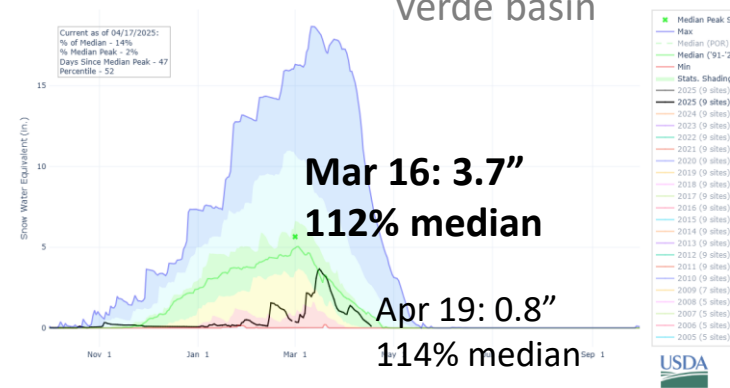


SNOW WATER EQUIVALENT IN SALT



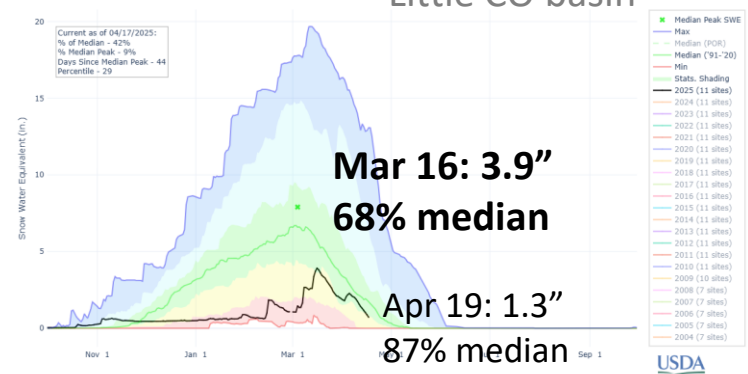
## Salt basin

SNOW WATER EQUIVALENT IN VERDE



## Verde basin

SNOW WATER EQUIVALENT IN LITTLE COLORADO



## Little CO basin

# Short-term drought advanced

Arizona Short-Term Drought  
October 1, 2024 to May 6, 2025

Percentage of change from short-term drought (%) Water Year 2025			
Category	1-Oct-24	6-May-25	Change (WY2025)
No Drought	28	0	-28
D0 - Abnormally Dry	32	1	-31
D1 – Moderate Drought	35	17	-18
D2 – Severe Drought	5	19	14
D3 – Extreme Drought	0	57	57
D4 – Exceptional Drought	0	6	6



droughtmonitor.unl.edu

@AZStateClimate

Last time Maricopa County had D4 was July 2021  
Was also last time AZ had this amount of D4 in state

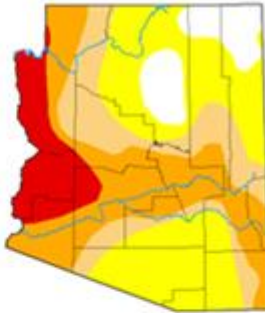
Arizona Short-Term Drought  
October 1, 2024 to May 6, 2025



October 1, 2024



November 5, 2024



December 3, 2024



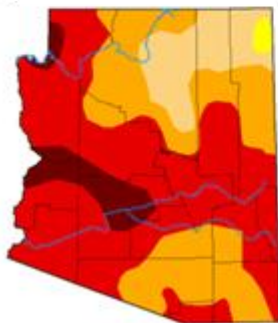
January 7, 2025



February 4, 2025



March 4, 2025



April 1, 2025



May 6, 2025

Intensity:  
None  
D0 Abnormally Dry  
D1 Moderate Drought  
D2 Severe Drought  
D3 Extreme Drought  
D4 Exceptional Drought

The Drought Monitor focuses on broad-scale conditions. Local conditions may vary. For more information on the Drought Monitor, go to <https://droughtmonitor.unl.edu/about.aspx>

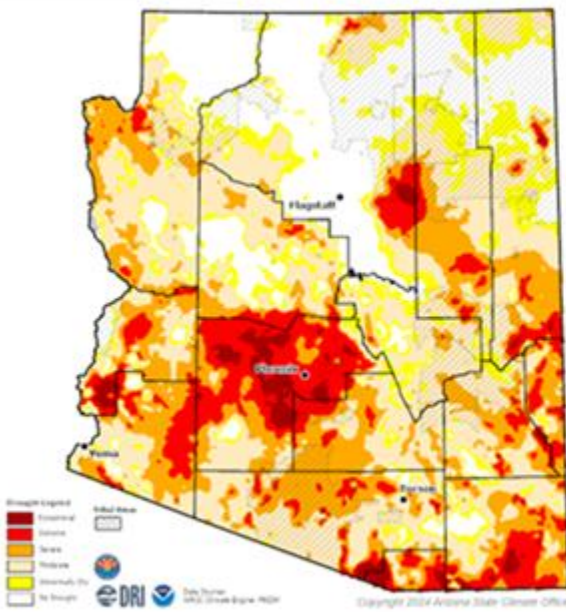


droughtmonitor.unl.edu

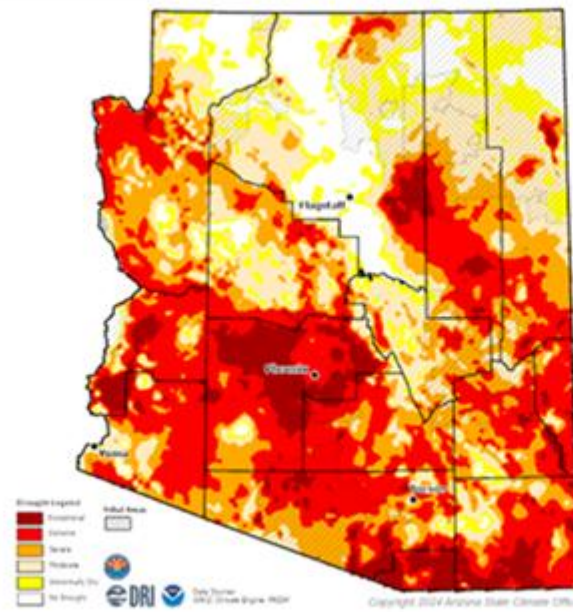
@AZStateClimate

# Long-term drought advanced after a very hot and dry Summer, Fall, and Winter

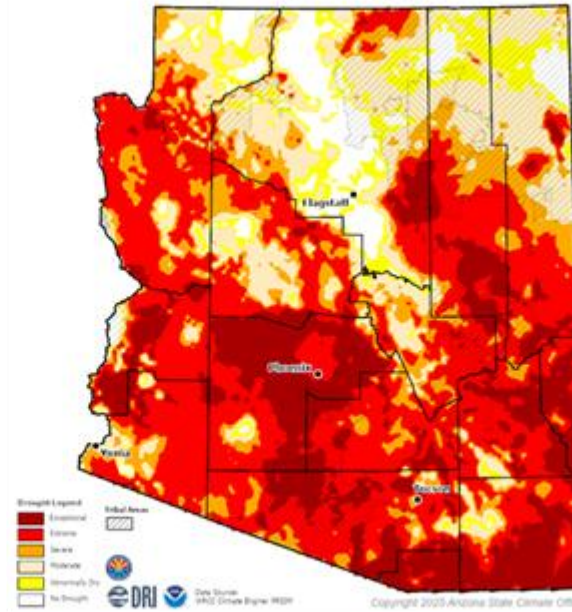
## Arizona Long-Term Drought



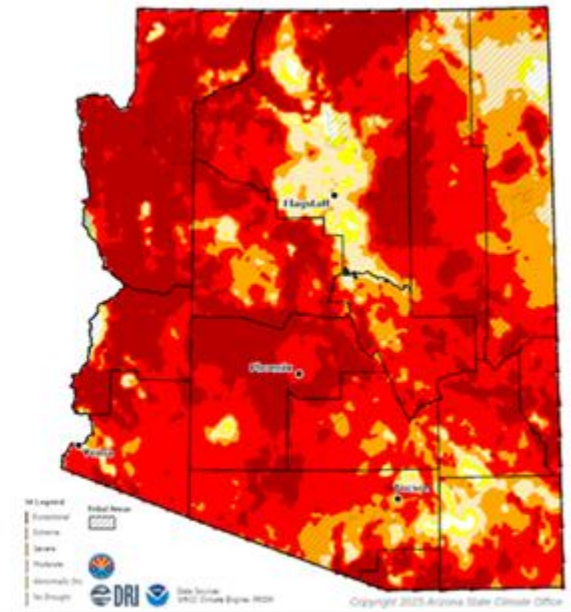
April to June 2024



July to September 2024



October to December 2025



January to March 2025

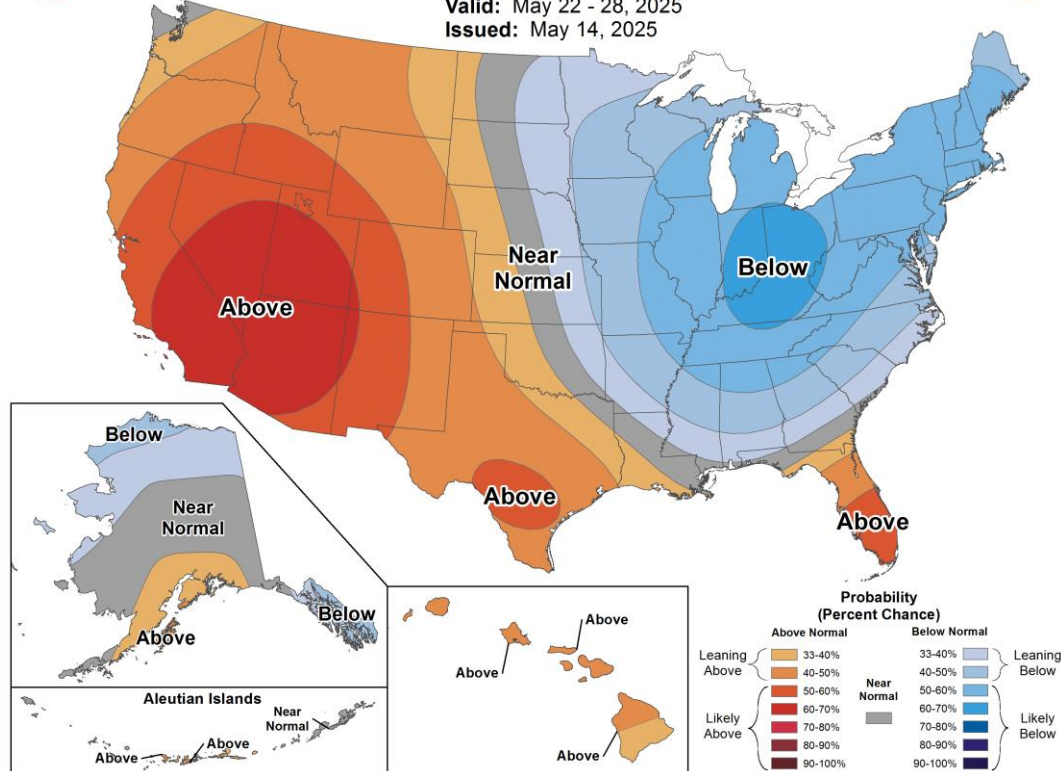
Statewide, May 2024 to April 2025 was the 2<sup>nd</sup> hottest and 2<sup>nd</sup> driest on record (preliminary data from NOAA/NCEI)

*CPC outlook: Excessive heat 5/22-5/28 during Memorial Day weekend*  
*Outdoor activity can be more dangerous with a very rapid change to hotter temperatures*



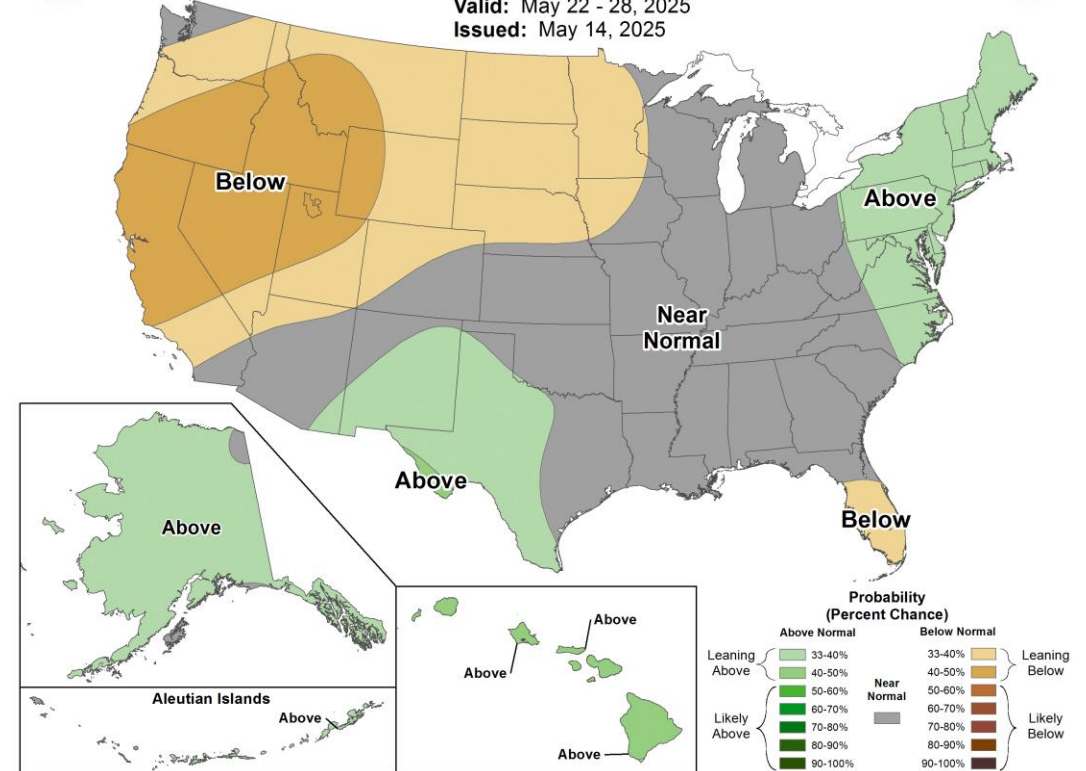
## 8-14 Day Temperature Outlook

Valid: May 22 - 28, 2025  
 Issued: May 14, 2025



## 8-14 Day Precipitation Outlook

Valid: May 22 - 28, 2025  
 Issued: May 14, 2025



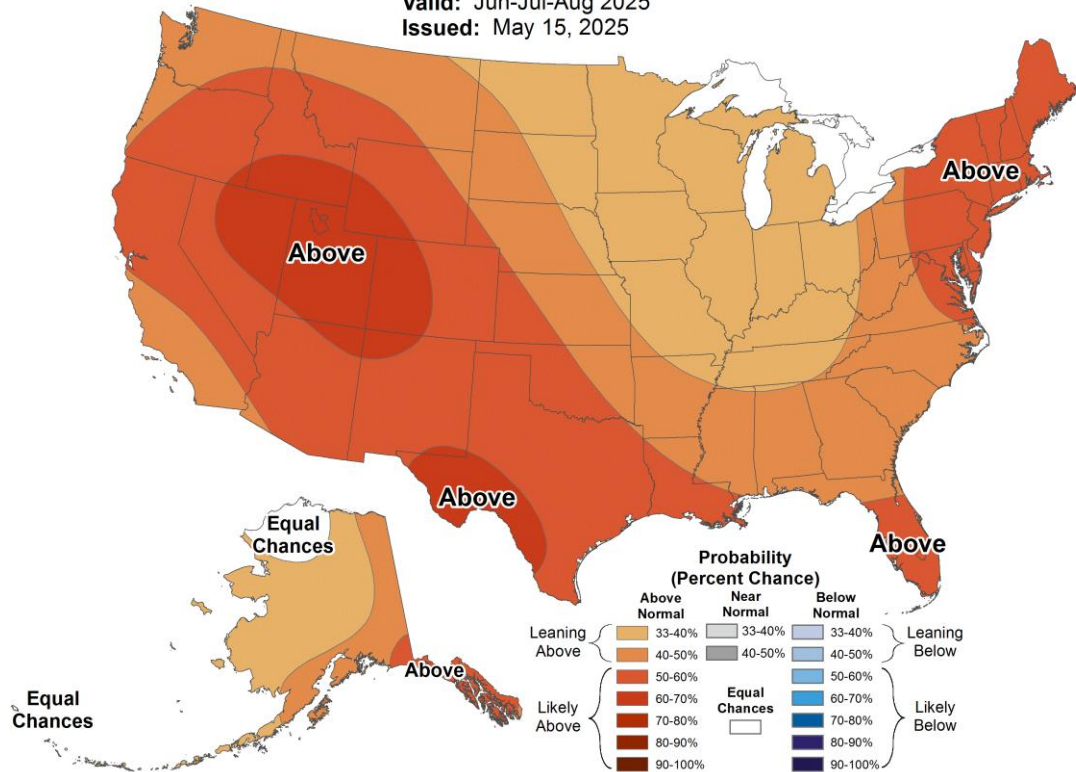
*June: typically more lightning-caused fire AZ* AZ Dept Forestry/Fire Mgt



## Seasonal Temperature Outlook



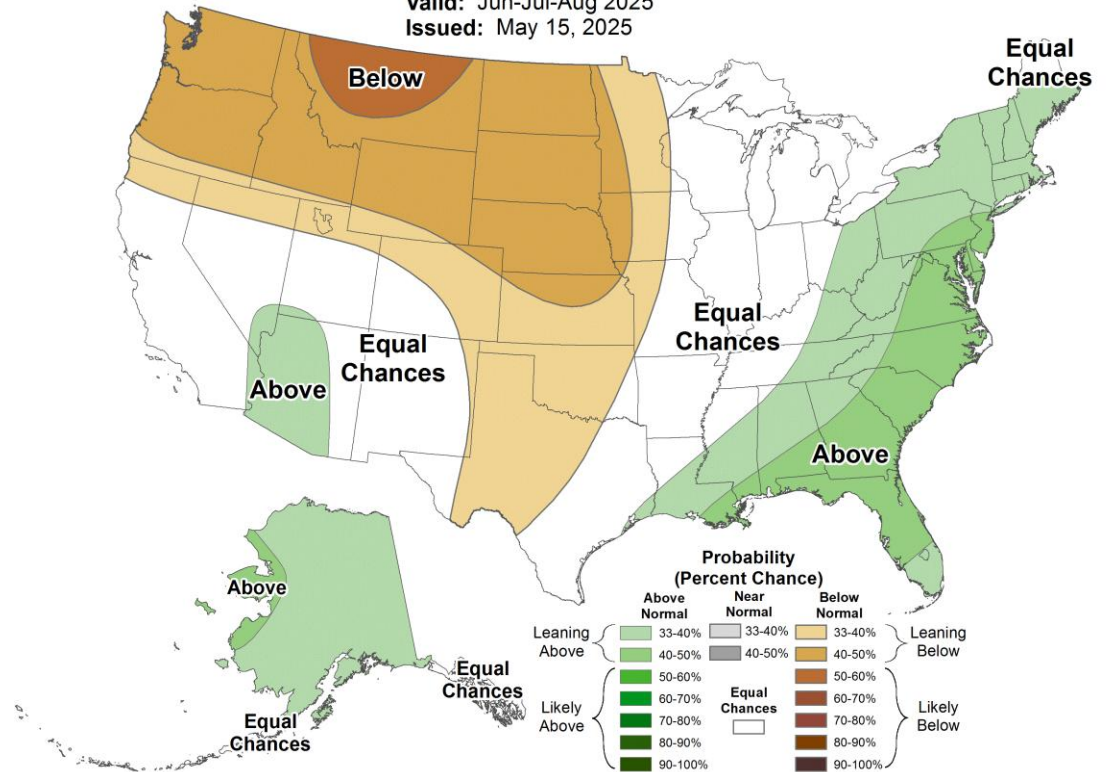
Valid: Jun-Jul-Aug 2025  
Issued: May 15, 2025



## Seasonal Precipitation Outlook



Valid: Jun-Jul-Aug 2025  
Issued: May 15, 2025



*Considerations: dry soil conditions Great Plains; dry winter Lower CO basin*

# Chelsea Peters, Tucson NWS Warning Coordination Meteorologist

<https://www.weather.gov/twc/Monsoon>

